



BOLDRINI

General Catalogue 2021



“ Experience, fun, technologies, materials and not last a lot of passion for everything original.
Allowed us, during the years, to realize products that anticipating all the trends, stands as the valid tools for the decoration.



Pennelli Boldrini was founded in the middle of the last century with the aim to create valid and specialized tools, that could allow the applicator to maximize the quality of his work and aesthetic result of the painting products.

Innovation and manufacturing capacity were and are the key elements for our Company's success on the Italian and international market.

From the first paint rollers produced and distributed in Italy, passing through the decorative tools, that made us known and appreciated all over the world, to the exhibition and commercial solutions. For over seventy years we have been committed to developing products and commercial solutions, that allow our customers to get the best from their work.

At Boldrini we created an entire universe around the search for innovation, trying to propose solutions and products, that stand out for their originality and functionality, distinguishing themselves from the crowd and bringing real benefits to the users.

Pennelli Boldrini srl

1950: year of foundation

3.000: Active customers

22: Distributors in the world

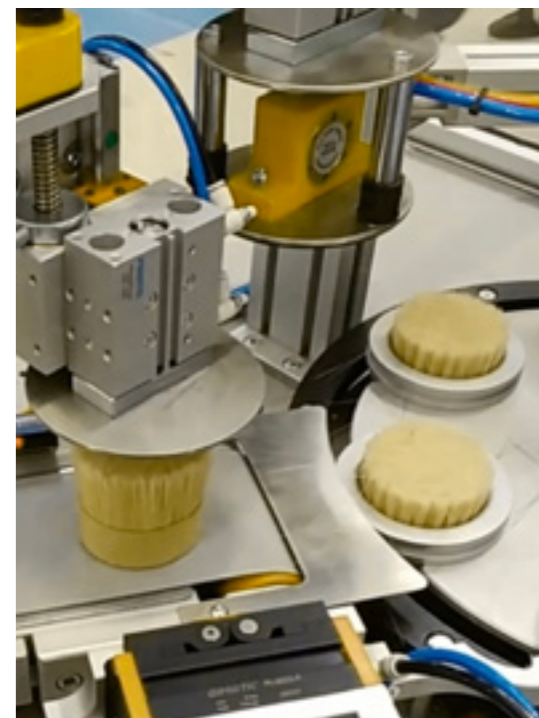
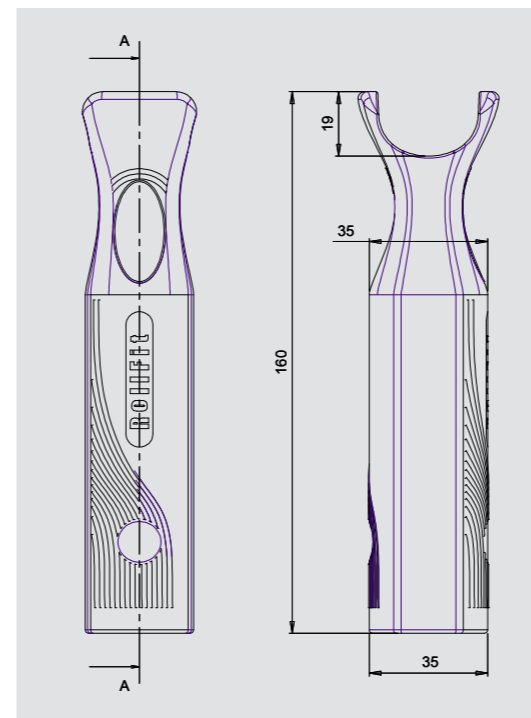
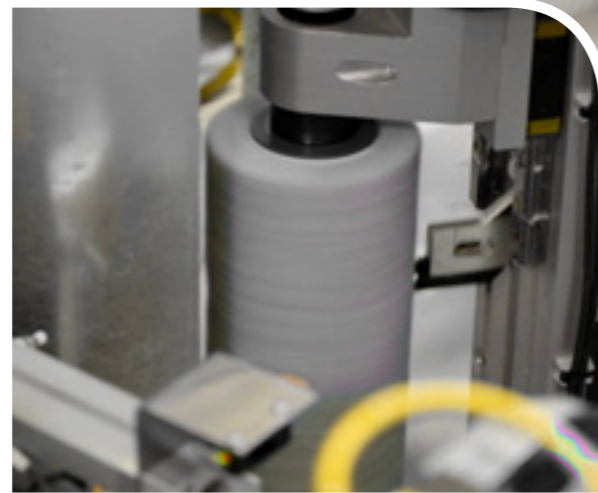
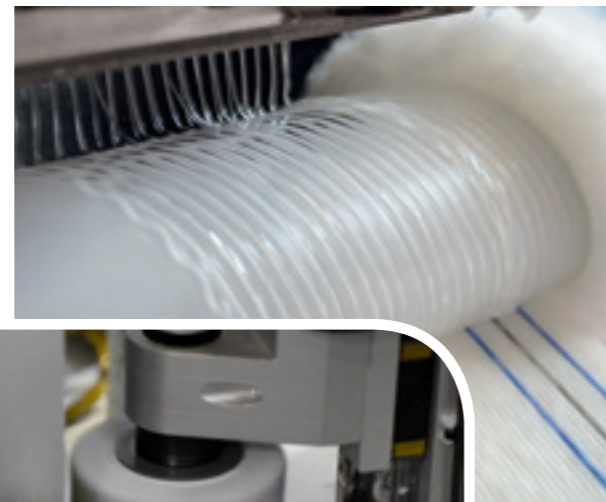
25: Commercial partners

5: patents registered



Always Original and Specialized...

Our mission is to produce professional and effective products, suitable for the usage and very cost-effective. With this intent, from 1950, we invest our time and resources to be the reference partner in the world of decoration.



Boldrini: high quality, Made in ITALY

We always sustain that our strenght is producing our products in Italy. We are proud of the great capacity which raise Italian artisans all over the world.

For this reason we are always 100 % family Company, composed by peoples, that carry on their work with love, passion and respect.

At the same time, we privilege the short chain, managing responsibly our purchases, coming from at 90% Italian or European suppliers.



“ Due to their construction characteristics, our products, subjected to rigorous durability and efficiency tests, far exceed the limits of standard materials, guaranteeing the best result on every surface and improving the quality of work of every applicator, professional as well as hobbyist.





Production and logistics, completely renovated in 2020

8.500 m²: total covered area

3.500 m²: new and modern logistic center

3.000: references always available in stock.

80 kw: of energy produced internally with a photovoltaic system.

It allows to produce independently the energy consumed for production processes, reducing the environmental impact of our Company.



“ Trust and loyalty of our customers are the prizes, which have always made us proud and stimulated to improve ourselves. This is why we have invested in a new and modern logistics facility of 3,500 m², to guarantee our customers fast and always complete deliveries.



| | |
|-------------------------------------------------|-----------|
| 1. Paint Rollers | 14 |
| 1.1. Quick selection guide | 16 |
| 1.2. Rollers for wall surfaces | 17 - 21 |
| 1.3. Rollers for industrial surfaces and floors | 22 - 25 |
| 1.4. Cage system rollers | 26 - 27 |
| 1.5. DIY rollers with fixed handle | 28 - 31 |
| 1.6. Mini rollers | 32 - 35 |
| 1.7. Handles and fittings for rollers | 36 - 41 |



| | |
|----------------------------------------------------|-----------|
| 2. Ceiling brushes | 42 |
| 2.1. High quality ceiling brushes, Premium quality | 44 - 45 |
| 2.2. Ceiling brushes, Professional quality | 46 - 47 |
| 2.3. Ceiling brushes, Essential quality | 48 - 49 |
| 2.4. Ceiling brushes with wooden handles | 50 - 51 |
| 2.5. Ceiling brushes for DIY | 52 - 53 |
| 2.6. Fittings | 54 - 55 |



| | |
|---------------------------------------|-----------|
| 3. Flat and round brushes | 56 |
| 3.1. High quality Flat brushes | 58 - 59 |
| 3.2. Professional Flat brushes | 60 - 61 |
| 3.3. Standard quality flat brushes | 62 - 63 |
| 3.4. DIY flat brushes | 64 - 65 |
| 3.5. Special brushes | 66 - 67 |
| 3.6. Radiator brushes | 68 - 71 |
| 3.7. Brushes for lines and decoration | 72 - 77 |



| | |
|----------------------------------------|-----------|
| 4. Decorative tools | 78 |
| 4.1. Spalter with or without handle | 80 - 81 |
| 4.2. Trowels for decoration | 82 - 83 |
| 4.3. Buffers for decoration | 84 - 85 |
| 4.4. Gloves and sponges for decoration | 86 - 87 |
| 4.5. Spatulas for decoration | 88 - 89 |
| 4.6. Rollers for decorative effects | 90 - 93 |



| | |
|------------------------------------------------------------|-----------|
| 5. Hand tools and fittings | 94 |
| 5.1. Plasterboards tools | 96 - 97 |
| 5.2. Lamps and sponge trowels | 98 - 99 |
| 5.3. Professional tools for insulations and wall claddings | 100 - 101 |
| 5.4. Special tools for resins and self-levellings | 102 - 103 |
| 5.5. Steel trowels and spatulas | 104 - 111 |
| 5.6. Scrapers, spatulas and mini trowels | 104 - 111 |
| 5.7. Accessories and safety equipment | 112 - 123 |



Roll·Fit



1. PAINT
ROLLERS

“ THE RIGHT ROLLER
FOR EVERY SURFACE

RollFit

QUICK SELECTION GUIDE

| ART.CODE | 344 | 746 | 964 | 356 | 963 | 354 | 842 | 739 | 747 | 748 | 333 | 331 | 314 | 324 | 759 |
|-------------|-------|-------|-------|-------|-------|-------|-------|-------|-------|------|-------|------|------|------|------|
| PAGE N° | 17 | 17 | 18 | 19 | 18 | 19 | 20 | 20 | 21 | 21 | 22 | 22 | 23 | 23 | 25 |
| PILE LENGTH | 21 mm | 18 mm | 18 mm | 20 mm | 12 mm | 13 mm | 14 mm | 12 mm | 15 mm | 6 mm | 12 mm | 6 mm | 5 mm | 5 mm | 9 mm |

WALL PAINTS

| | | | | | | | | | | | | | | | |
|------------------------------------------------|---|---|---|---|---|---|---|---|---|---|---|---|---|---|--|
| Water-based paints for interior | ● | ● | ● | ● | ● | ● | ○ | ○ | ○ | ○ | | | | | |
| Washable paints | ● | ● | ● | ○ | ● | ● | ● | ● | ● | ● | | | | | |
| Enamel paints and thixotropic paints | | | | | ○ | ○ | ● | ○ | ○ | ● | | | ○ | ○ | |
| Quartz paints | ● | ● | ● | ● | | | | | | | | | | | |
| Silicate paints | ● | ● | ● | ● | | | | | | | | | | | |
| Pearlescent decorative paints | | | | | | | | | | | ● | ○ | | | |
| Rough base paints and paints with microspheres | | | | | | | | | | | ● | ○ | | | |

WATER-BASED ENAMELS AND PAINTS

| | | | | | | | | | | | | | | | |
|------------------------|--|--|--|--|--|--|---|---|---|---|---|--|---|---|--|
| Water based enamels | | | | | | | | ● | ○ | | | | | ● | |
| Enamels and PU varnish | | | | | | | | ● | | | | | ○ | ● | |
| Primers and base coats | | | | | | | ● | ○ | | ○ | ● | | | | |

SOLVENT-BASED ENAMELS AND PAINTS

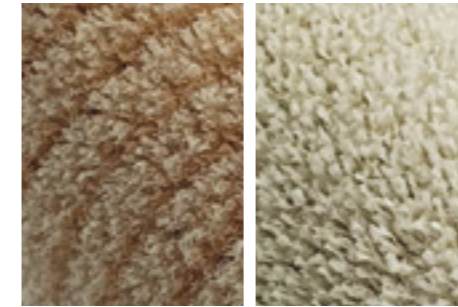
| | | | | | | | | | | | | | | | |
|------------------------------------|--|--|--|--|--|--|--|--|--|--|---|---|---|---|--|
| Solvent - based Enamels and paints | | | | | | | | | | | | ○ | ● | ● | |
| Solvent alkyd paints | | | | | | | | | | | ○ | ● | ○ | | |
| Ferromicaceous enamel | | | | | | | | | | | ● | ● | | | |
| Nitro- based enamels and paints | | | | | | | | | | | | ● | | | |

TWO-COMPONENT RESINS AND PAINTS

| | | | | | | | | | | | | | | | |
|-----------------------------------|--|--|--|--|--|--|---|---|--|--|---|---|--|---|---|
| Two-component epoxy paints | | | | | | | | | | | ● | ● | | ○ | |
| Two-component polyurethane paints | | | | | | | ● | ○ | | | ○ | ○ | | ● | ● |
| Two-component resins | | | | | | | ● | | | | ○ | ○ | | ● | ● |

RollFit

Dusseldorf roller Duro roller



| | |
|------------------------|---------|
| Absorption | ■ ■ ■ ■ |
| Resilience and release | ■ ■ ■ ■ |
| Finishing | ■ ■ □ □ |
| Time lasting | ■ ■ ■ ■ |

DUSSELDORF: the best reference for the professional artisans since more than 30 years. Special polyamide fibers fabric with three-facial section is perfect for applying any kind of wall paint on the rough surfaces.

TECHNICAL CHARACTERISTICS:

The excellent absorption power guarantees the quick coverage of the large surfaces. An excellent resilience allows the roller to slide easily reducing the applicator's efforts. Great time lasting.

FORMATS AVAILABLE:

| | |
|--|------------------------------------------|
| | Standard refill in RollFit box Dispenser |
| | Refill promo in RollFit box 60x40 cm |
| | Roller with fixed handle |

344

Professional Roller Dusseldorf 21 mm

Rollers for ROUGH AND VERY ROUGH wall surfaces

| | | |
|----------------|--------------|---------|
| rough plasters | new plasters | facades |
|----------------|--------------|---------|

Applying the INTERIOR AND EXTERIOR PAINTS

| | | |
|-------------------|---------------|-----------------|
| dispersion paints | quartz paints | silicate paints |
|-------------------|---------------|-----------------|



| art. | ∅ | options | | 20 cm | 23 cm | 25 cm |
|-------|-------|----------------------|---------|-------|-------|-------|
| 344.2 | 48 mm | roller refill | 20 pcs | | | |
| 344.3 | 58 mm | roller refill | 12 pcs | | | |
| 444.2 | 48 mm | roller with handle | 10 pcs | | | |
| 444.3 | 58 mm | roller with handle | 10 pcs | | | |
| PL344 | 58 mm | promotional pall box | 120 pcs | | | |

746

Professional Roller Duro 18 mm

Rollers for ROUGH AND SLIGHTLY ROUGH wall surfaces

| | | |
|-------------------|---------------|---------|
| interior plasters | thin plasters | facades |
|-------------------|---------------|---------|

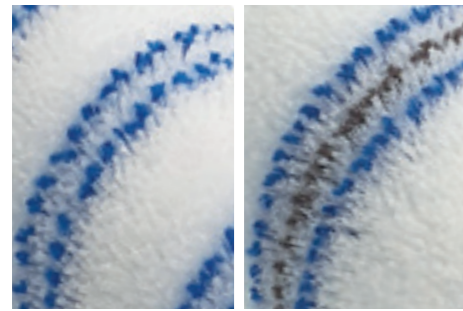
Applying the INTERIOR AND EXTERIOR PAINTS

| | | |
|-------------------|---------------|-----------------|
| dispersion paints | quartz paints | silicate paints |
|-------------------|---------------|-----------------|



| art. | ∅ | options | | 20 cm | 23 cm | 25 cm |
|-------|-------|----------------------|---------|-------|-------|-------|
| 746.3 | 58 mm | roller refill | 12 pcs | | | |
| PL746 | 58 mm | promotional pall box | 120 pcs | | | |

RollFit MARK-less roller



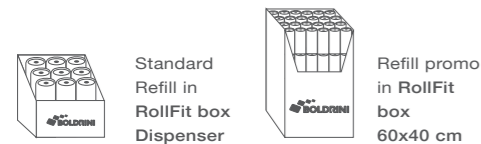
| | |
|------------------------|-----------|
| Absorption | ■ ■ ■ □ |
| Resilience and release | ■ ■ ■ ■ ■ |
| Finishing | ■ ■ ■ □ |
| Time lasting | ■ ■ ■ ■ |

MARK-LESS: Fabric with modified polyamid Special fiber.

MARK-less Treatment, that prevents fiber's plucking and reduces fluff release drastically. Extra thin crease is made for the best sliding and finishing.

TECHNICAL CHARACTERISTICS: High absorption capacity combined with the constant and uniform release. An excellent resilience allows the roller to slide easily reducing the applicator's efforts. The optimal finish on the main wall surfaces. Easy to clean.

FORMATS AVAILABLE:



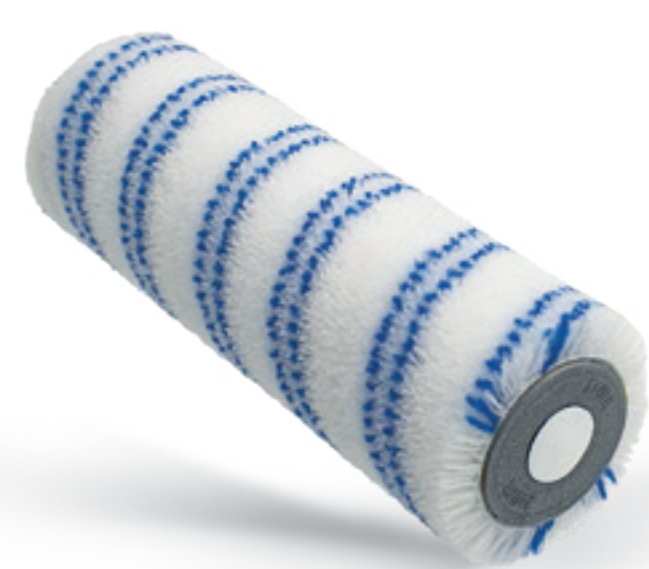
963 Professional Roller **MARK-less 12 mm**

Roller for **SMOOTH AND SLIGHTLY ROUGH wall surfaces**

| | | |
|--------|--------------|---------------|
| gypsum | plasterboard | thin plasters |
|--------|--------------|---------------|

Applying **WATER-BASED PAINTS AND VARNISHES FOR INTERIORS**

| | | |
|------------------|--------------------------|--------------|
| dispersal paints | washable and latex paint | wall enamels |
|------------------|--------------------------|--------------|



| art. | ∅ | options | | 20 cm | 23 cm | 25 cm |
|-------|-------|-------------------|---------|-------|-------|-------|
| 963.2 | 48 mm | Roller refill | 20 pcs | | | |
| 963.3 | 58 mm | Roller refill | 12 pcs | | | |
| PL963 | 58 mm | Refill in pal-box | 120 pcs | | | |

964 Professional Roller **MARK-less 18 mm**

Roller for **ROUGH AND SLIGHTLY ROUGH wall surfaces**

| | | |
|-------------------|---------------|---------|
| internal plasters | thin plasters | facades |
|-------------------|---------------|---------|

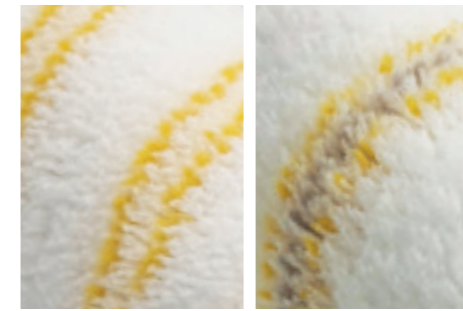
For applying **INTERIOR AND EXTERIOR PAINTS**

| | | |
|------------------|---------------|-----------------|
| dispersal paints | quartz paints | silicate paints |
|------------------|---------------|-----------------|



| art. | ∅ | options | | 20 cm | 23 cm | 25 cm |
|-------|-------|-------------------|---------|-------|-------|-------|
| 964.3 | 58 mm | Roller refill | 12 pcs | | | |
| PL964 | 58 mm | Refill in pal-box | 120 pcs | | | |

RollFit GOLD-faden roller



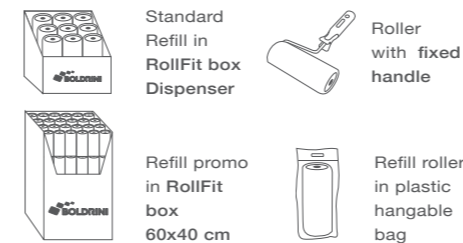
| | |
|------------------------|---------|
| Absorption | ■ ■ ■ □ |
| Resilience and release | ■ ■ ■ □ |
| Finishing | ■ ■ ■ □ |
| Time lasting | ■ ■ ■ ■ |

GOLD-faden: A timeless classic, the most known and sold, the synonymous of the professionalism and the best value for money. Cordoned fabric is made of 100% high quality polyamide.

TECHNICAL CHARACTERISTICS:

An excellent resilience level makes this fabric have the high performance. Good absorption of any kind of wall paint. Uniform release and long time lasting.

FORMATS AVAILABLE:



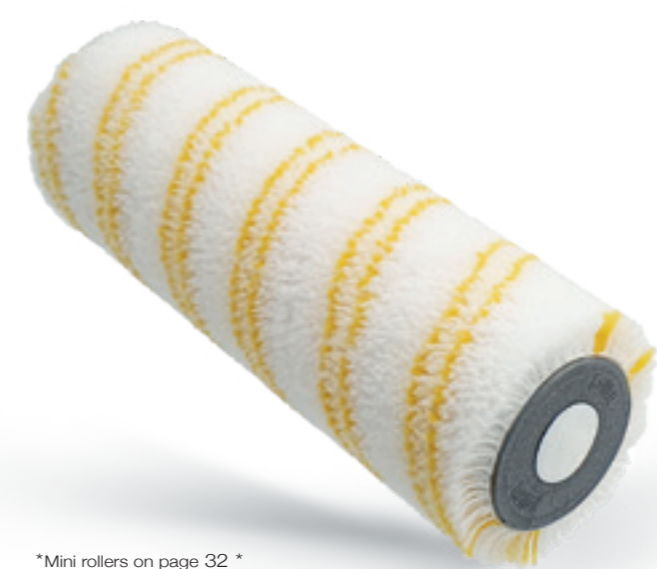
354 Professional Roller **GOLD-faden 13 mm**

Roller for **SMOOTH and SLIGHTLY ROUGH wall surfaces**

| | | |
|--------|---------------|--------------|
| gypsum | plasterboards | thin plaster |
|--------|---------------|--------------|

Applying the **WATER-BASED PAINTS AND VARNISHES FOR INTERIOR**

| | | |
|------------------|--------------------------|---|
| dispersal paints | washable and latex paint | - |
|------------------|--------------------------|---|



*Mini rollers on page 32 *

| art. | ∅ | options | | 20 cm | 23 cm | 25 cm |
|-------|-------|-------------------|---------|-------|-------|-------|
| 354.2 | 48 mm | Roller refill | 20 pcs | | | |
| 454.2 | 48 mm | Complete Roller | 10 pcs | | | |
| 354.5 | 48 mm | Refill hangable | 12 pcs | | | |
| PL354 | 48 mm | Refill in pal-box | 162 pcs | | | |

356 Professional Roller **GOLD-faden 20 mm**

Roller for **ROUGH AND VERY ROUGH wall surfaces**

| | | |
|----------------|--------------|---------|
| rough plasters | new plasters | facades |
|----------------|--------------|---------|

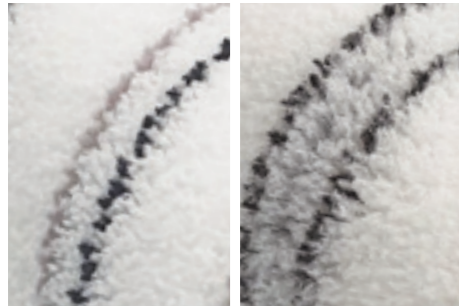
Applying **INTERIOR AND EXTERIOR PAINTS**

| | | |
|------------------|---------------|---|
| dispersal paints | quartz paints | - |
|------------------|---------------|---|



| art. | ∅ | options | | 20 cm | 23 cm | 25 cm |
|-------|-------|-------------------|---------|-------|-------|-------|
| 356.2 | 48 mm | Roller refill | 20 pcs | | | |
| 356.3 | 58 mm | Roller refill | 12 pcs | | | |
| 456.3 | 58 mm | Complete Roller | 10 pcs | | | |
| 356.5 | 58 mm | Refill hangable | 12 pcs | | | |
| PL356 | 58 mm | Refill in pal-box | 120 pcs | | | |

RollFit Micro+ roller
HI-TEN roller



| | |
|------------------------|-----------|
| Absorption | ■ ■ ■ □ □ |
| Resilience and release | ■ ■ □ □ □ |
| Finishing | ■ ■ ■ ■ ■ |
| Time lasting | ■ ■ ■ □ □ |

MICRO+: new microfiber fabric with the highest density. Having more rigidity and resilience than the standard microfiber this fabric guarantees an excellent finish, as well as the more absorption and the quick coverage.

HI-TEN: new fabric made of carved and textured poliester fibers. Flawless finish on very smooth surfaces. No any fibers loss makes it possible to apply the resins and opaque and very thin finishes on walls or floors.

FORMATS AVAILABLE:



739 Professional Roller **Micro+ 12 mm**

Roller for SMOOTH wall surfaces

| | | |
|--------|---------------|-------------|
| gypsum | plasterboards | wood panels |
|--------|---------------|-------------|

Applying WATER-BASED PAINTS, **VARNISHES AND ENAMELS**

| | | |
|------------------|--------------------------|--------------|
| dispersal paints | washable and latex paint | wall enamels |
|------------------|--------------------------|--------------|



*Mini rollers page 32

| art. | ∅ | options | | 20 cm | 23 cm | 25 cm |
|-------|-------|--------------------------|---------|-------|-------|-------|
| 739.2 | 48 mm | Roller refill | 20 pcs | | | |
| 739.3 | 58 mm | Roller refill | 12 pcs | | | |
| 839.2 | 48 mm | Complete roller | 10 pcs | | | |
| 739.5 | 48 mm | Refill hangable | 12 pcs | | | |
| PL739 | 48 mm | Refill in pal-box | 162 pcs | | | |

842 Professional Rollers **HI-TEN 14 mm**

Roller for SMOOTH wall surfaces, **walls or floors**

| | | |
|--------|---------------|-----------------|
| gypsum | plasterboards | concrete floors |
|--------|---------------|-----------------|

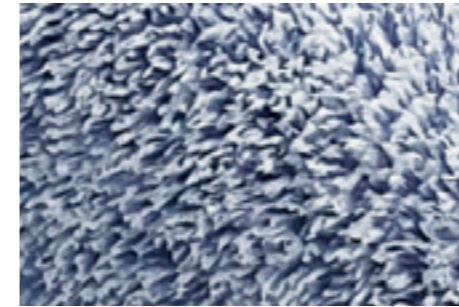
Applying WATER-BASED PAINTS AND **RESINS**

| | | |
|--------------------------|--------------------------|-----------------------|
| washable and latex paint | acrylic and PU varnishes | acrylic and PU resins |
|--------------------------|--------------------------|-----------------------|



| art. | ∅ | options | | 20 cm | 23 cm | 25 cm |
|-------|-------|--------------------------|---------|-------|-------|-------|
| 842.2 | 48 mm | Roller refill | 20 pcs | | | |
| PL842 | 48 mm | Refill in pal-box | 162 pcs | | | |

RollFit MicroTex roller



| | |
|------------------------|-----------|
| Absorption | ■ ■ ■ □ □ |
| Resilience and release | ■ ■ □ □ □ |
| Finishing | ■ ■ ■ ■ ■ |
| Time lasting | ■ ■ □ □ □ |

MicroTex: Fabric made of microfiber and textured poliester filament blending. This combination improves the roller's performance and maintains the excellent finishing, as well as, guarantees the better release and absorption.

TECHNICAL CHARACTERISTICS:

Excellent finishing on the smooth and very smooth walls. 15mm version fits applying the water-based and washable paints. 6mm version makes it possible to apply the wall enamels, paints and resins for floors.

FORMATS AVAILABLE:



748 Professional Roller **MicroTex 6 mm**

Roller for SMOOTH surfaces, walls or floors

| | | |
|--------|---------------|-----------------|
| gypsum | plasterboards | concrete floors |
|--------|---------------|-----------------|

Applying WATER-BASED PAINTS AND RESINS

| | | |
|---------------------------|--------------------------|-----------------------|
| washable and latex paints | acrylic and PU varnishes | acrylic and PU resins |
|---------------------------|--------------------------|-----------------------|



*Mini rollers page 33

| art. | ∅ | options | | 20 cm | 23 cm | 25 cm |
|-------|-------|--------------------------|---------|-------|-------|-------|
| 748.2 | 48 mm | Roller refill | 20 pcs | | | |
| 748.5 | 48 mm | Refill hangable | 12 pcs | | | |
| PL748 | 48 mm | Refill in pal-box | 162 pcs | | | |

747 Professional Roller **MicroTex 15 mm**

Roller for SMOOTH wall surfaces

| | | |
|--------|---------------|-------------|
| gypsum | plasterboards | wood panels |
|--------|---------------|-------------|

Applying WATER-BASED **PAINTS, VARNISHES AND ENAMELS**

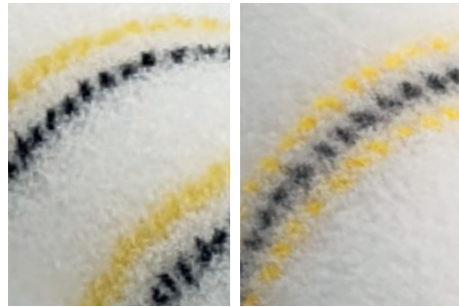
| | | |
|------------------|-----------------------|--------------|
| dispersal paints | washable/ latex paint | wall enamels |
|------------------|-----------------------|--------------|



*Mini rollers page 32

| art. | ∅ | options | | 20 cm | 23 cm | 25 cm |
|-------|-------|--------------------------|---------|-------|-------|-------|
| 747.3 | 58 mm | Roller refill | 12 pcs | | | |
| PL747 | 58 mm | Refill in pal-box | 120 pcs | | | |

RollFit ME-TEX roller



| | |
|------------------------|-----------|
| Absorption | ■ ■ ■ ■ □ |
| Resilience and release | ■ ■ ■ ■ ■ |
| Finishing | ■ ■ ■ ■ □ |
| Time lasting | ■ ■ ■ ■ ■ |

ME-TEX: High density 100% textured polyamide fiber. An excellent resistance and resilience make it possible to apply even the most aggressive products without any fiber loss or its detachment.

Characteristics: The high absorption with any pile length. Me-TEX guarantees the uniform absorption and the perfect applying of the most aggressive painting products.

331 Professional Roller **ME-TEX 6 mm**

Roller for SMOOTH surfaces, **walls or floors**

| | | |
|-----------------|-------------------------|---------------------|
| concrete floors | gypsum or plasterboards | industrial surfaces |
|-----------------|-------------------------|---------------------|

Applying SOLVENT-BASED, EPOXY VARNISHES ETC...

| | | |
|-----------------|-----------------------|-----------------|
| epoxy varnishes | iron micaceous paints | nitro varnishes |
|-----------------|-----------------------|-----------------|



*Mini rollers page 33

333 Rullo professionale **ME-TEX 12 mm**

Roller for SMOOTH surfaces, **walls or floors**

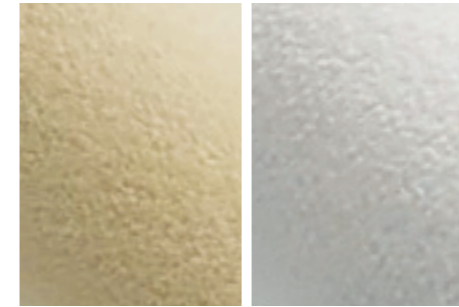
| | | |
|-----------------|-------------------------|---------------------|
| concrete floors | gypsum or plasterboards | industrial surfaces |
|-----------------|-------------------------|---------------------|

Applying EPOXY VARNISHES, **BASE COATS AND PRIMERS**

| | | |
|-----------------|--------------------------|------------------------|
| epoxy varnishes | paints with microspheres | base coats and primers |
|-----------------|--------------------------|------------------------|



RollFit Velour roller
Micro Felt roller



| | |
|------------------------|---------|
| Absorption | ■ ■ □ □ |
| Resilience and release | ■ ■ ■ □ |
| Finishing | ■ ■ ■ ■ |
| Time lasting | ■ ■ □ □ |

VELOUR WOOL ROLLER:

The CLASSIC ONE for solvent-based enamels' and varnishes' application. For the perfect finish and uniform release of enamels and varnishes.

MICRO FELT:

New generation fabric, very thin and compact is perfect for applying any kind of PU or acryl-based enamels, varnishes or resins, both one- and two-component. The special texture allows the right expansion of the resins for the uniform and perfect coverage. No fiber lost during the usage.

FORMATS AVAILABLE:



314 Professional Roller **VELOUR 5 mm**

Roller for SMOOTH surfaces, walls or floors

| | | |
|---------------|-------------------------|------------|
| smooth floors | gypsum or plasterboards | mdf panels |
|---------------|-------------------------|------------|

Applying SOLVENT-based ENAMELS AND VARNISHES

| | | |
|-----------------------|-----------------|---|
| solvent-based enamels | alkyd varnishes | - |
|-----------------------|-----------------|---|



* Mini roller page 33 *

324 Professional Roller **MICRO FELT 5 mm**

Roller for SMOOTH surfaces, walls or floors

| | | |
|---------------|-------------------------|------------|
| smooth floors | gypsum or plasterboards | mdf panels |
|---------------|-------------------------|------------|

Applying ACRYL AND PU **ENAMELS AND RESINS**

| | | |
|---------------------------------|------------------|-----------|
| water and solvent based enamels | two-component PU | PU resins |
|---------------------------------|------------------|-----------|



* Mini roller page 33 *

FORMATS AVAILABLE:



| art. | ∅ | options | | 20 cm | 23 cm | 25 cm |
|-------|-------|---------------|--|--------|-------|-------|
| 331.2 | 48 mm | Roller refill | | 20 pcs | | |

| art. | ∅ | options | | 20 cm | 23 cm | 25 cm |
|-------|-------|---------------|--|--------|-------|-------|
| 333.2 | 48 mm | Roller refill | | 20 pcs | | |

| art. | ∅ | options | | 10 cm | 16 cm | 20 cm | 23 cm | 25 cm |
|-------|-------|-----------------------------------|--|--------|-------|-------|-------|-------|
| 314.2 | 48 mm | Roller refill | | 20 pcs | | | | |
| 414.1 | 42 mm | Complete Roller with fixed handle | | 10 pcs | | | | |

| art. | ∅ | options | | 20 cm | 23 cm | 25 cm |
|-------|-------|-----------------|--|--------|-------|-------|
| 324.2 | 48 mm | Roller refill | | 20 pcs | | |
| 324.5 | 48 mm | Refill hangable | | 12 pcs | | |

842 Professional Roller with special sizes **Hi-ten 14 mm**

Floor roller and for covering large surfaces. Perfect for applying:

- one-component varnishes
- PU two-component varnishes
- floor resins



| art. | Ø | options | | 25 cm | 40 cm | 50 cm | 60 cm |
|-------|-------|---------------|------------------------------------|-------|-------|-------|-------|
| 842.2 | 48 mm | Roller refill | 20 pcs (cm 25) 5 pcs (40/50/60) | | | | |

333 Professional roller with special sizes **Me-tex 12 mm**

Floor roller and for covering large surfaces. Perfect for applying:

- Solvent-based varnishes and enamels
- two-component epoxy
- base coats and primers



| art. | Ø | options | | 25 cm | 40 cm | 50 cm | 60 cm |
|-------|-------|---------------|------------------------------------|-------|-------|-------|-------|
| 333.2 | 48 mm | Roller refill | 20 pcs (cm 25) 5 pcs (40/50/60) | | | | |

759 Professional roller with special sizes **Micro+ 9 mm**

Floor roller and for covering large surfaces. Perfect for applying:

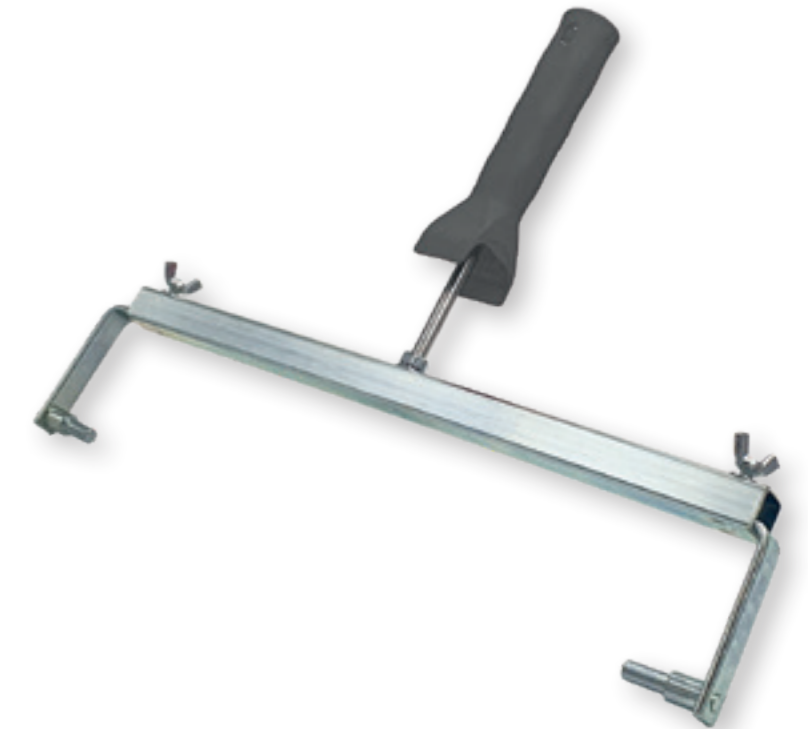
- PU two-components varnishes
- one-component varnishes
- floor sheathing



| art. | Ø | options | | 25 cm | 40 cm | 50 cm | 60 cm |
|-------|-------|---------------|------------------------------------|-------|-------|-------|-------|
| 759.2 | 48 mm | Roller refill | 20 pcs (cm 25) 5 pcs (40/50/60) | | | | |

79341 Professional Handle **extendable from 40 to 60 cm**

Special handle for extra-long rollers adjustable within 40 e 60 cm



| art. | options | | € |
|-------|---------------------------------------------------------------------|-------|---|
| 79341 | Special handle for extra-long rollers. Adjustable within 40 e 60 cm | 1 pcs | |

792 CAGE SYSTEM handle

Special handle with integrated flanges for tubes refill rollers



| art. | Ø | options | | 20 cm | 23 cm | 25 cm |
|------|-------|--------------------------------------------------------------------------|--------|-------|-------|-------|
| 792 | 48 mm | Special handle with integrated flanges For cage system refill rollers | 10 pcs | | | |

354.9 Roller **GOLD-faden 13 mm**

Refill Roller for cage system



356.9 Roller **GOLD-faden 20 mm**

Refill roller for cage system



| art. | Ø | options | | 20 cm | 23 cm | 25 cm |
|-------|-------|---------------------------------------|--------|-------|-------|-------|
| 354.9 | 48 mm | Refill roller Gold-Faden 13 mm | 20 pcs | | | |
| 356.9 | 48 mm | Refill roller Gold-Faden 20 mm | 20 pcs | | | |

739.9 Roller **Micro+ 12 mm**

Refill Roller for cage system



963.9 Roller **Mark less 12 mm**

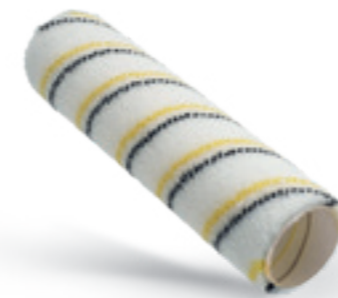
Refill roller for cage system



| art. | Ø | options | | 20 cm | 23 cm | 25 cm |
|-------|-------|--------------------------------------|--------|-------|-------|-------|
| 739.9 | 48 mm | Refill roller Micro+ 12 mm | 20 pcs | | | |
| 963.9 | 48 mm | Refill roller Mark Less 12 mm | 20 pcs | | | |

331.9 Roller **MeTex 6 mm**

Refill roller for cage system



333.9 Roller **MeTex 12 mm**

Refill roller for cage system



| art. | Ø | options | | 20 cm | 23 cm | 25 cm |
|-------|-------|----------------------------------|--------|-------|-------|-------|
| 331.9 | 48 mm | Refill roller MeTex 6 mm | 20 pcs | | | |
| 333.9 | 48 mm | Refill roller MeTex 12 mm | 20 pcs | | | |

324.9 Roller **MicroFelt 5 mm**

Refill roller for cage system



314.9 Roller **Velour 5 mm**

Refill roller for cage system



| art. | Ø | options | | 20 cm | 23 cm | 25 cm |
|-------|-------|-------------------------------------|--------|-------|-------|-------|
| 324.9 | 48 mm | Refill roller MicroFelt 5 mm | 20 pcs | | | |
| 314.9 | 48 mm | Refill roller Velour 5 mm | 20 pcs | | | |

748.9 Roller **MicroTex 6 mm**

Refill roller for cage system



| art. | Ø | options | | 20 cm | 23 cm | 25 cm |
|-------|-------|------------------------------------|--------|-------|-------|-------|
| 748.9 | 48 mm | Refill roller MicroTex 6 mm | 20 pcs | | | |

421 Complete Roller, **Nylon 21 mm**

Roller for ROUGH wall surfaces

| | | |
|--------------|---------|-------------------|
| new plasters | facades | interior plasters |
|--------------|---------|-------------------|

Applying **WATER-BASED PAINTS AND QUARTZ PAINTS**

| | | |
|------------------|---------------|---|
| dispersal paints | quartz paints | - |
|------------------|---------------|---|



| art. | Ø | options | | 20 cm | 23 cm | 25 cm |
|-------|-------|--------------------|--------|-------|-------|-------|
| 421.3 | 58 mm | roller with handle | 10 pcs | | | |
| PL421 | 58 mm | roller in pal-box | 72 pcs | | | |

407 Complete Roller, **Acryl Max 20 mm**

Roller for ROUGH and SLIGHTLY ROUGH wall surfaces

| | | |
|-------------------|---------------|---|
| interior plasters | painted walls | - |
|-------------------|---------------|---|

Applying **WATER-BASED PAINTS**

| | | |
|------------------|------------------------------|---|
| dispersal paints | poster paints and breathable | - |
|------------------|------------------------------|---|



| art. | Ø | options | | 20 cm | 23 cm | 25 cm |
|-------|-------|--------------------|--------|-------|-------|-------|
| 407.2 | 48 mm | roller with handle | 10 pcs | | | |
| 407.3 | 58 mm | roller with handle | 10 pcs | | | |
| PL407 | 58 mm | roller in pal-box | 72 pcs | | | |

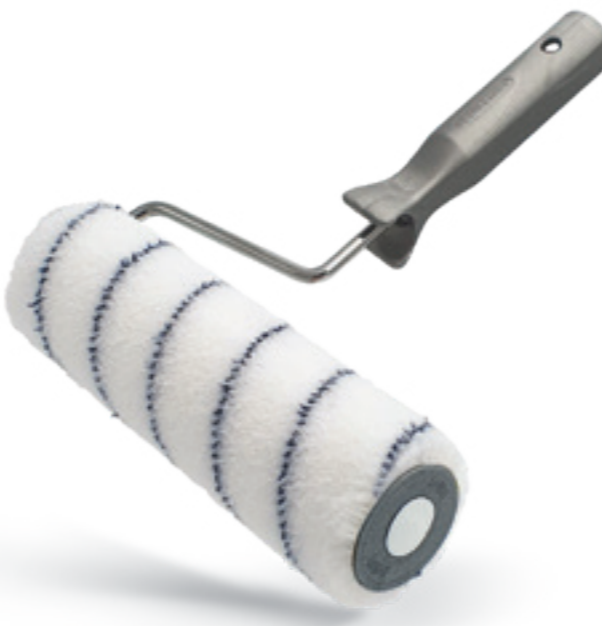
942 Complete Roller, **Airtex 10 mm**

Roller for SMOOTH wall and floor surfaces

| | | |
|--------|--------------|---|
| gypsum | plasterboard | - |
|--------|--------------|---|

Applying **WATER-BASED VARNISHES AND RESINS**

| | | |
|------------------|------------------------|----------------------|
| dispersal paints | acryl and PU varnishes | washable and enamels |
|------------------|------------------------|----------------------|



| art. | Ø | options | | 20 cm | 23 cm | 25 cm |
|-------|-------|--------------------|--------|-------|-------|-------|
| 942.2 | 48 mm | roller with handle | 10 pcs | | | |
| PL942 | 48 mm | roller in pal-box | 96 pcs | | | |

404.1 Polyester Roller **18 mm**

Polyester roller, complete with plastic handle



404.7 SET Polyester Roller + grid

Set roller of polyester + grid. Dimensions 18 cm e 22 cm



| art. | Ø | | 10 cm | 16 cm | 18 cm | 22 cm | 24 cm |
|-------|-------|--------|-------|-------|-------|-------|-------|
| 404.1 | 42 mm | 20 pcs | | | | | |
| 404.7 | 42 mm | 10 pcs | | | | | |

413.1 Polyester Roller **11 mm**

Polyester roller, complete with plastic handle



412.1 Microfiber Roller **10 mm**

Roller of microfiber complete with plastic handle



| art. | Ø | | 10 cm | 15 cm | 18 cm | 22 cm | 24 cm |
|-------|-------|--------|-------|-------|-------|-------|-------|
| 413.1 | 42 mm | 20 pcs | | | | | |
| 412.1 | 48 mm | 20 pcs | | | | | |

45001 SET Acrylmax Roller + pole

Set of acrylmax roller with telescopic pole. Sold not fixed.



45007 SET Polyester Roller + pole

Set of polyester roller with telescopic pole. Sold not fixed.



| art. | Ø | | 22 cm |
|-------|-------|--------|-------|
| 45001 | 58 mm | 10 pcs | |
| 45007 | 42 mm | 10 pcs | |

344.4 Padded Roller **Perlon 21 mm**

Roller for ROUGH and VERY ROUGH wall surfaces

| | | |
|---------|----------|------------------------|
| facades | textured | strollato(orange-peel) |
|---------|----------|------------------------|

Applying WATER-BASED AND QUARTZ PAINTS

| | | |
|------------------|---------------|-----------------|
| dispersal paints | quartz paints | silicate paints |
|------------------|---------------|-----------------|

319.4 Padded Roller **Perlon 20 mm**

Roller for ROUGH and VERY ROUGH wall surfaces

| | | |
|---------|----------|------------------------|
| facades | textured | strollato(orange-peel) |
|---------|----------|------------------------|

Applying WATER-BASED AND QUARTZ PAINTS

| | | |
|------------------|---------------|-----------------|
| dispersal paints | quartz paints | silicate paints |
|------------------|---------------|-----------------|

378.4 Padded Roller **Nylon 19 mm**

Roller for ROUGH and VERY ROUGH wall surfaces

| | | |
|---------|----------|------------------------|
| facades | textured | strollato(orange-peel) |
|---------|----------|------------------------|

Applying WATER-BASED AND QUARTZ PAINTS

| | | |
|------------------|---------------|---|
| dispersal paints | quartz paints | - |
|------------------|---------------|---|



| art. | Ø | options | | 20 cm | 23 cm | 25 cm |
|-------|-------|--------------------------------------------------|--------|-------|-------|-------|
| 344.4 | 65 mm | Roller refill padded with thick sponge | 12 pcs | | | |

| art. | Ø | options | | 20 cm | 23 cm | 25 cm |
|-------|-------|--------------------------------------------------|--------|-------|-------|-------|
| 319.4 | 65 mm | Roller refill padded with thick sponge | 12 pcs | | | |

| art. | Ø | options | | 20 cm | 23 cm | 25 cm |
|-------|-------|--------------------------------------------------|--------|-------|-------|-------|
| 378.4 | 65 mm | Roller refill padded with thick sponge | 12 pcs | | | |

305.4 Padded Roller **ECO 20 mm**

Roller for ROUGH and VERY ROUGH wall surfaces

| | | |
|---------|----------|------------------------|
| facades | textured | strollato(orange-peel) |
|---------|----------|------------------------|

Applying water-based paints

| | | |
|------------------|---|---|
| dispersal paints | - | - |
|------------------|---|---|



327 Lambswool Roller **24 mm**

White genuine lambswool Roller



340 Lambswool Roller **24 mm**

Yellow genuine lambswool Roller



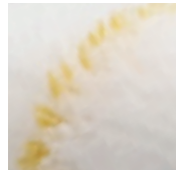
| art. | Ø | options | | 23 cm |
|-------|-------|----------------------------------------------|--------|-------|
| 305.4 | 55 mm | padded roller Complete with handle | 10 pcs | |

| art. | Ø | options | | 20 cm | 23 cm | 25 cm |
|-------|-------|---------------|-------|-------|-------|-------|
| 327.3 | 60 mm | Roller refill | 1 pcs | | | |

| art. | Ø | options | | 20 cm | 23 cm | 25 cm |
|-------|-------|---------------|-------|-------|-------|-------|
| 340.3 | 60 mm | Roller refill | 1 pcs | | | |

Professional Mini and midi rollers for water-based paints

Roll-Fit



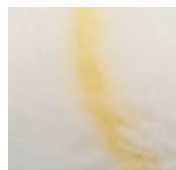
GOLD-faden: A timeless classic, the most known and sold, the synonymous of the professionalism and the best value for money.



Micro+: Thick microfiber fabric is perfect for applying the water-based paints, enamels and varnishes. Optimal finish and uniform coverage.

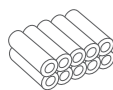


MicroTex 12mm: Fabric made of microfiber and textured polyester filament blending, perfect for applying water-based paints and sealers.



Acrylic Yarn Fabric: DIY and small works mini roller. For applying the water-based paints and products on rough and slightly rough surfaces.

FORMATS AVAILABLE:



Refill mini rollers in transparent box



Set 2 refills in hangable plastic bag



Mini roller complete with fixed handle

300.305 Mini rollers **Goldfaden 12 mm**

Applying the WATER-BASED PAINTS, VARNISHES AND ENAMELS

| | | |
|------------------|----------|---|
| dispersal paints | washable | - |
|------------------|----------|---|



606 Mini rollers **MicroTex 12 mm**

Applying WATER-BASED PAINTS, PRIMERS, BASES

| | | |
|------------------|--------------------------|-------------------|
| dispersal paints | washable and latex paint | primers and bases |
|------------------|--------------------------|-------------------|



| art. | Ø | options | | 5 cm | 10 cm | 15 cm |
|------|-------|---------------------------------|--------|------|-------|-------|
| 300 | 15 mm | Mini rollers in transparent box | 20 pcs | | | |
| S300 | 15 mm | 2 mini roller refills set | 10 pcs | | | |
| C300 | 15 mm | mini roller with handle | 10 pcs | | | |
| 305 | 35 mm | flocked in transparent box | 10 pcs | | | |
| 606 | 15 mm | mini rollers in transparent box | 20 pcs | | | |

1939.939 Mini rollers **Micro+ 8 mm**

Applying WASHABLE PAINTS AND WATER-BASED ENAMELS

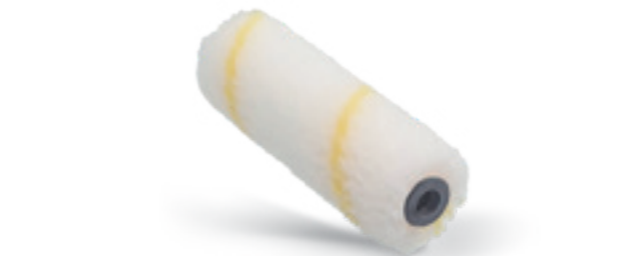
| | | |
|------------------|--------------------------|--------------------|
| dispersal paints | washable and latex paint | water-based enamel |
|------------------|--------------------------|--------------------|



310 Acrylic Yarn Mini roller **12 mm**

For small works and applying water-based paints

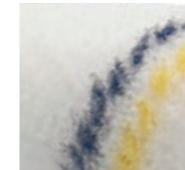
| | | |
|------------------|---|---|
| dispersal paints | - | - |
|------------------|---|---|



| art. | Ø | options | | 5 cm | 10 cm | 15 cm |
|------|-------|---------------------------------|--------|------|-------|-------|
| 1939 | 15 mm | Mini rollers in transparent box | 20 pcs | | | |
| S939 | 15 mm | 2 mini roller refills set | 10 pcs | | | |
| C939 | 15 mm | mini roller with handle | 10 pcs | | | |
| 939 | 35 mm | flocked in transparent box | 10 pcs | | | |
| 310 | 15 mm | Mini rollers in transparent box | 20 pcs | | | |

Professional Mini and midi rollers for enamels and varnish

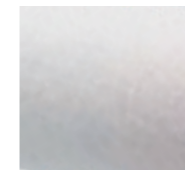
Roll-Fit



ME-tex: fabric made of 100% textured polyamide, high density. Excellent resilience and e resistance, perfect for solvents and iron micaceous.



Velour 100%: The classic fabric for applying solvent-based alkyd enamels and varnishes. Excellent finish, uniform deposition and good coverage.

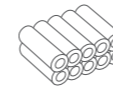


MicroFelt: New generation fabric, very thin and compact, for applying any kind of water- or solvent-based varnish.

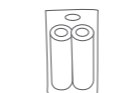


MicroTex 5mm: Fabric made of microfiber and textured polyester filament blending, perfect for applying water-based varnishes.

FORMATS AVAILABLE:



Refill mini roller in transparent box



Set 2 refills in hangable plastic bag



Mini roller complete with fixed handle

1938.938 Mini rollers **MeTex 6 mm**

Applying SOLVENT-BASED AND TWO-COMPONENTS PRODUCTS

| | | |
|-----------------------|---------------|---------------|
| iron micaceous finish | epoxy varnish | nitro varnish |
|-----------------------|---------------|---------------|



800 Mini rollers **100% velour 4 mm**

Applying SOLVENT-BASED PRODUCTS

| | | |
|---------------|-----------------------|---|
| alkyd enamels | solvent-based enamels | - |
|---------------|-----------------------|---|



| art. | Ø | options | | 5 cm | 10 cm | 15 cm |
|------|-------|---------------------------------|--------|------|-------|-------|
| 1938 | 15 mm | mini rollers in transparent box | 20 pcs | | | |
| S938 | 15 mm | set 2 refill mini rollers | 10 pcs | | | |
| C938 | 15 mm | mini roller with handle | 10 pcs | | | |
| 938 | 35 mm | flocked in transparent box | 10 pcs | | | |
| 800 | 15 mm | mini roller in transparent box | 20 pcs | | | |

1937.937 Mini rollers **MicroFelt 4 mm**

Applying WATER-BASED PRODUCTS

| | | |
|-----------------|--------------------|-----------------------|
| acrylic enamels | acrylic PU enamels | base coats and resins |
|-----------------|--------------------|-----------------------|



600 Mini rollers **MicroTex 6 mm**

Applying WATER-BASED PRODUCTS

| | | |
|-----------------|--------------------|---|
| acrylic enamels | acrylic PU enamels | - |
|-----------------|--------------------|---|



| art. | Ø | options | | 5 cm | 10 cm | 15 cm |
|------|-------|---------------------------------|--------|------|-------|-------|
| 1937 | 15 mm | mini rollers in transparent box | 20 pcs | | | |
| S937 | 15 mm | set 2 refill mini rollers | 10 pcs | | | |
| C937 | 15 mm | mini roller with handle | 10 pcs | | | |
| 937 | 35 mm | flocked in transparent box | 10 pcs | | | |
| 600 | 15 mm | mini roller in transparent box | 20 pcs | | | |

RollFit



MOLTOPREN:
Extra thin sponge of high density, for uniform deposition, without any air bubble and imperfection.



CONCAVE:
High density sponge made with concave corners, that avoids any imperfection during the application.

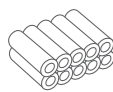


FLOCKED STANDARD:
Standard sponge with extra thin flocked cover, for applying water-based products and high-quality finishes.



FLOCKED PREMIUM:
Grid sponge with triple density, with extra thin flocked cover. Significantly reduces the imperfections and air bubbles.

FORMATS AVAILABLE:



Refill mini rollers in transparent box



Set 2 refills in hangable plastic bag



Mini roller complete with fixed handle

750.751 Mini rollers **Sponge moltopren HD**

Applying WATER-BASED PRODUCTS

| | | |
|---------------------|--------------------------|---|
| water-based enamels | water-based PU varnishes | - |
|---------------------|--------------------------|---|



751 both sides rounded

893 Mini rollers **FLOCKED sponge**

Applying WATER-BASED PRODUCTS

| | | |
|---------------------|--------------------------|----------|
| water-based enamels | water-based PU varnishes | lacquers |
|---------------------|--------------------------|----------|



753 Sponge Rollers **CONCAVE**

Applying WATER-BASED PRODUCTS

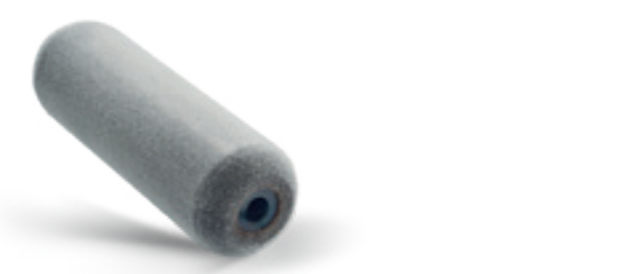
| | | |
|---------------------|--------------------------|---|
| water-based enamels | water-based PU varnishes | - |
|---------------------|--------------------------|---|



56615 Mini roller **FLOCKED PREMIUM**

Applying WATER-BASED PRODUCTS

| | | |
|---------------------|--------------------------|----------|
| water-based enamels | water-based PU varnishes | lacquers |
|---------------------|--------------------------|----------|



| art. | Ø | options | | 5 cm | 10 cm | 15 cm |
|------|-------|--------------------------------|--------|------|-------|-------|
| 750 | 30 mm | mini roller in transparent box | 20 pcs | | | |
| S750 | 30 mm | set 2 refill mini rollers | 10 pcs | | | |
| C750 | 30 mm | mini roller with handle | 10 pcs | | | |
| 751 | 30 mm | 2 sides rounded mini roller | 10 pcs | | | |
| 753 | 30 mm | mini roller in transparent box | 20 pcs | | | |

| art. | Ø | options | | 5 cm | 10 cm | 15 cm | 18 cm |
|-------|-------|--------------------------------|--------|------|-------|-------|-------|
| 893 | 30 mm | mini roller in transparent box | 20 pcs | | | | |
| S893 | 30 mm | set 2 refills mini rollers | 10 pcs | | | | |
| C893 | 30 mm | mini roller with handle | 10 pcs | | | | |
| 56615 | 30 mm | mini roller in transparent box | 20 pcs | | | | |

770 Sponge mini roller for orange-peel effect

Large grained sponge mini roller for orange-peel effect



14... Sponge Rollers for orange-peel effect

Sponge rollers, thin, medium and large grained-complete with handle



| art. | description | | 5 cm | 10 cm | 20 cm | 25 cm |
|------|-----------------------|--------|------|-------|-------|-------|
| 770 | large g.sponge roller | 10 pcs | | | | |
| 4033 | thin grain roller | 1 pcs | | | | |
| 4013 | medium grain roller | 1 pcs | | | | |
| 4003 | large grain roller | 1 pcs | | | | |

06320.10320 Tube mini rollers

Curved profile rollers for painting tubes, poles etc...



14... Aluminium spiked rollers

Aluminium spiked rollers with vertical or horizontal ribbing



| art. | Ø | description | | 5 cm | 10 cm | 15 cm |
|-------|-------|--------------------|-------|------|-------|-------|
| 06320 | - | tube mini roller | 1 pcs | | | |
| 10320 | - | tube mini roller | 1 pcs | | | |
| 14223 | 20 mm | vertical ribbing | 1 pcs | | | |
| 14513 | 50 mm | horizontal ribbing | 1 pcs | | | |
| 14213 | 20 mm | horizontal ribbing | 1 pcs | | | |

14000 Refill roller **angular**

Roller for painting the angles. Suitable for 5 cm handle.



1966 Spiked rollers with needles

Plastic spiked rollers, composed of needled disks

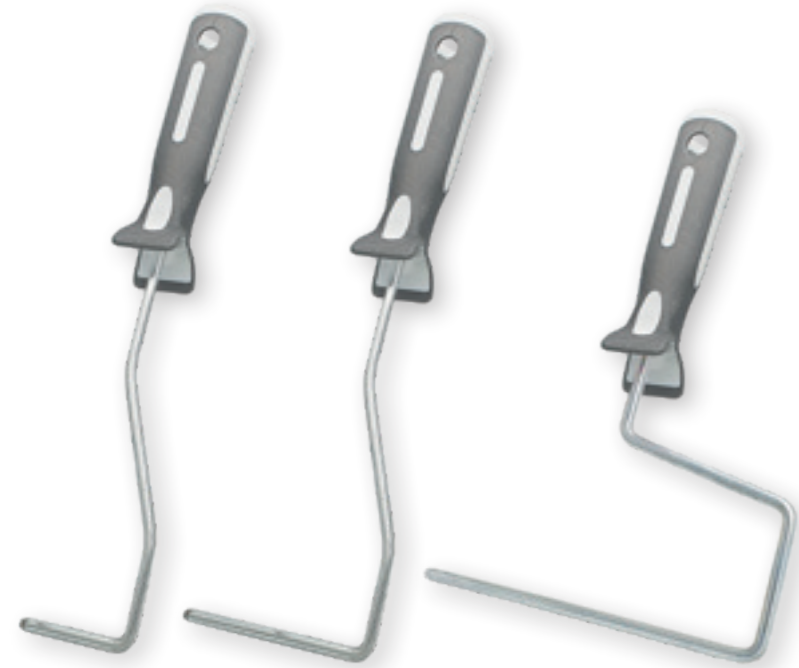


| art. | description | | 5 cm | 18 cm | 25 cm | 50 cm |
|-------|---------------------------|-------|------|-------|-------|-------|
| 14000 | angular mini roller | 1 pcs | | | | |
| 1966 | spiked with needled disks | 1 pcs | | | | |

0001... Handles for mini and flocked rollers

Universal handles for mini and flocked rollers, available with different length bows:

Consult the chart below for the available sizes and lengths



| art. | ↕ | description | | 5 cm | 10 cm | 15 cm |
|----------|-------|------------------------------|--------|------|-------|-------|
| 00015-10 | 27 cm | standard bow | 20 pcs | | | |
| 00013-11 | 19 cm | short bow | 20 pcs | | | |
| 00018-17 | 12 cm | extra short bow | 20 pcs | | | |
| 00097 | 48 cm | extra long bow | 10 pcs | | | |
| 00096 | 14 cm | handle for mini roller cm 15 | 20 pcs | | | |

891 Roller handles

Two-material ROLLFIT-fit handle

Galvanised steel made bow



| art. | | 10 cm | 16 cm | 20 cm | 23 cm | 25 cm |
|------|--------|-------|-------|-------|-------|-------|
| 891 | 20 pcs | | | | | |

799 INOX handle for rollers

Ergonomic handle AVANGUARDIA

Stainless steel (INOX) bow

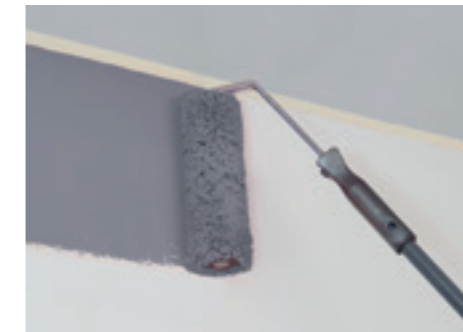


| art. | | 20 cm | 23 cm | 25 cm |
|------|--------|-------|-------|-------|
| 799 | 12 pcs | | | |

HORIZON

patent n° 202019000000621

Avoid using the brush and better the finish quality. No place for troublesome color differences caused by different tools' usage.



New patented handle, for profiling without ladder, made to simple the painting of the difficult surfaces.

Can be used for profiling of walls, fixtures, painting string courses, brickworks, windowsills, balconies and any difficult surface with horizontal course, without ladder.

899.10 Handle HORIZON 10 cm

Patented handle for easy painting, no ladder needed on horizontal coursed surfaces.



| art. | description | | 10 cm |
|-------|--------------------------------|--------|-------|
| 89910 | Patented handle HORIZON, cm 10 | 16 pcs | |

899.23 Handle HORIZON 23 cm

Patented handle for easy painting, no ladder needed on horizontal coursed surfaces.



| art. | description | | 23 cm |
|-------|--------------------------------|--------|-------|
| 89923 | Patented handle HORIZON, cm 23 | 20 pcs | |

00024 Pole Flip 1 m

Rubber-coated telescopic pole with cone and thread

Size:

1 m
60cm / 100 cm



02... Steel pole

Steel telescopic pole with cone and thread

Size:

2 m
110 cm / 200 cm

3 m
160 cm / 300 cm



03... Aluminium pole

Aluminium telescopic pole with cone and thread

Size:

1,3 m
70 cm / 130 cm

2 m
110 cm / 200 cm

3 m
160 cm / 300 cm



03... Aluminium pole

Aluminium telescopic pole with cone and thread

Size:

4 m
210cm / 400 cm

4,5 m
175 cm / 450 cm

6 m
185 cm / 600 cm

8 m
210 cm / 800 cm



| s. 00024 | | € |
|---------------------------------------|--------|---|
| Rubber-coated, steel telescopic pole. | 12 pcs | |

| s. 0002... | | € |
|----------------------------------|--------|---|
| Steel telescopic pole 2 m | 20 pcs | |
| Steel telescopic pole 3 m | 12 pcs | |

| s. 0003... | | € |
|----------------------------------------|--------|---|
| Aluminium telescopic pole 1,3 m | 12 pcs | |
| Aluminium telescopic pole 2 m | 12 pcs | |
| Aluminium telescopic pole 3 m | 12 pcs | |

| s. 0003... | | € |
|----------------------------------------|--------|---|
| Aluminium telescopic pole 4 m | 12 pcs | |
| Aluminium telescopic pole 4,5 m | 6 pcs | |
| Aluminium telescopic pole 6 m | 6 pcs | |
| Aluminium telescopic pole 8 m | 6 pcs | |

Hurricane

Economic roller clean tool easy to use, allows the easier cleaning of any roller. You do not need to remove the handle even.



WATCH VIDEO HERE:

Scan QR code with smartphone for presentation video.



90002 Roller clean system Hurricane

Roller clean tool for universal usage, with rollers of any dimensions



| art. | description | | € |
|-------|---------------------------------------------------------|-------|---|
| 90002 | Roller clean tool Hurricane transparent plastic body | 1 pcs | |

001... Plastic grid for roller

Art. 00101 grid cm 10 Art. 00103 grid cm 20

Art. 00104 grid cm 25



001... Steel grid for roller

Art. 00105 grid cm 13 Art. 00106 grid cm 16


Art. 00107 grid cm 20 Art. 00108 grid cm 25





90003 Paint sieves

Plastic made sieve, for all types of paint tins



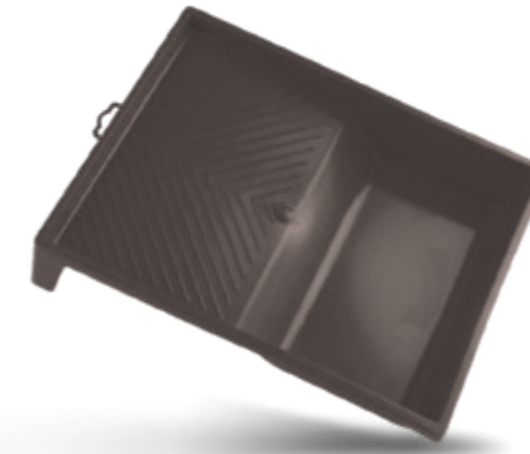
| art. | description | dim. |  | € |
|-------|-------------------------|-------|-------------------------------------------------------------------------------------|---|
| 00101 | Plastic grid for roller | 10 cm | 20 pcs | |
| 00103 | | 20 cm | 20 pcs | |
| 00104 | | 25 cm | 20 pcs | |


| art. | description | dim. |  | € |
|-------|-----------------------|-------|---------------------------------------------------------------------------------------|---|
| 00105 | Steel grid for roller | 13 cm | 20 pcs | |
| 00106 | | 16 cm | 20 pcs | |
| 00107 | | 20 cm | 20 pcs | |
| 00108 | | 25 cm | 20 pcs | |

| art. | descriptions | dim. |  | € |
|-------|----------------------------------------------------------------------|------|---------------------------------------------------------------------------------------|---|
| 90003 | Professional sieve for paints. Matches the main dimensions' tins. | - | 10 pcs | |

00075/85 Plastic bowl

Art. 00075 bowl cm 10/15 Art. 00085 bowl cm 18/22




| art. | description | dim. |  | € |
|-------|-----------------------|----------|---------------------------------------------------------------------------------------|---|
| 00085 | Bowl for mini rollers | 10/15 cm | 12 pcs | |
| 00075 | Bowl for rollers | 18/22 cm | 12 pcs | |

00008/14 Plastic buckets

Art. 00008 bucket 8 l Art. 00008 bucket 14 l




| art. | description | dim. |  | € |
|-------|---------------|------|---------------------------------------------------------------------------------------|---|
| 00008 | Moplen bucket | 8 l | 12 pcs | |
| 00014 | Moplen bucket | 14 l | 12 pcs | |

00063.67 Plaster pebbles

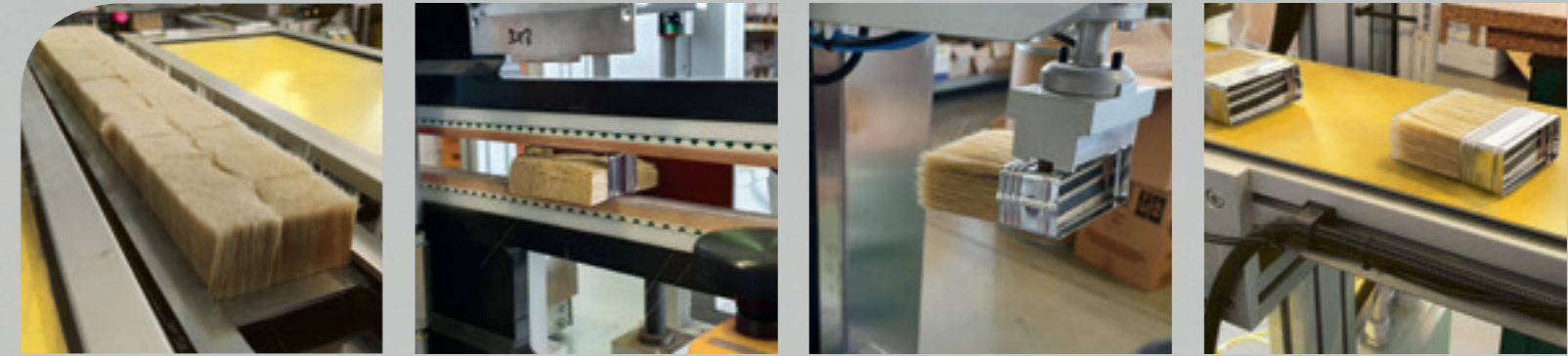
Art. 00063 Cone-shaped pebble Art. 00067 Plate pebble



| art. | description | dim. |  | € |
|-------|---------------------------------|------|---------------------------------------------------------------------------------------|---|
| 00063 | Cone-shaped pebble for plasters | - | 12 pcs | |
| 00067 | Plate pebble for plasters | - | 12 pcs | |



“ TECHNOLOGY AND
INNOVATION



2.
CEILING
BRUSHES



High quality ceiling brushes and mini brushes: **PREMIUM EVO range**

PREMIUM S Gold brush



| | |
|--------------|-----------|
| Absorption | ■ ■ ■ ■ □ |
| Profiling | ■ ■ ■ ■ ■ |
| Finish | ■ ■ ■ ■ ■ |
| Time lasting | ■ ■ ■ ■ ■ |

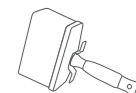
TECHNICAL CHARACTERISTICS:

exclusive mix of the special synthetic bristles. High performance with any kind of paints, perfect feeling of usage and high level profiling.

Easy to clean, it allows to apply any kind of paint on the main wall surfaces.

Moplen body is perfect for the better resistance while immersed in water. Very light and resistant.

FORMATS AVAILABLE:



Single ceiling brush in box of 12 pz

18 Professional ceiling brush **S. Gold**

Professional ceiling brush of new generatio **synthetic bristle**

| | | |
|--------------------|---------|------------------|
| water-based paints | primers | enamels, varnish |
|--------------------|---------|------------------|



18 Professional ceiling brush **S. Gold**

Professional ceiling brush of new generatio **synthetic bristle**

| | | |
|--------------------|---------|------------------|
| water-based paints | primers | enamels, varnish |
|--------------------|---------|------------------|

High quality ceiling brushes and mini brushes: **PREMIUM CLASSIC range**

PREMIUM S. Plus brush



| | |
|--------------|-----------|
| Absorption | ■ ■ ■ ■ ■ |
| Profiling | ■ ■ ■ ■ ■ |
| Finish | ■ ■ ■ ■ □ |
| Time lasting | ■ ■ ■ ■ ■ |

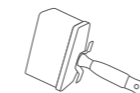
TECHNICAL CHARACTERISTICS:

new mix of natural bristles and high quality synthetic fiber.

High concentration of the natural bristles is made for more absorption and high level handling and versatility. Extra long bristles made for more time lasting and perfect profiling.

Moplen body is perfect for the better resistance while immersed in water. Very light and resistant.

FORMATS AVAILABLE:



Single ceiling brush in box of 12 pz

704 Professional ceiling brush **S. Plus**

Premium quality brush, **high % on natural bristles**

| | | |
|--------------------|---------|------------------|
| water-based paints | primers | enamels, varnish |
|--------------------|---------|------------------|



704 Professional ceiling brush **S. Plus**

Premium quality brush, **high % on natural bristles**

| | | |
|--------------------|---------|------------------|
| water-based paints | primers | enamels, varnish |
|--------------------|---------|------------------|

s. 704

Bristle: Blonde PLUS

Handle: Moplen extra light

Glue: Epoxy

| Format | Length | Width | Pcs | € |
|-----------|--------|--------|-----|---|
| 30x70 mm | 76 mm | 12 pcs | | |
| 30x100 mm | 76 mm | 12 pcs | | |

s. 704

Bristle: Blond PLUS

Handle: Moplen two-material

Glue: Epoxy

| Format | Length | Width | Pcs | € |
|-----------|--------|--------|-----|---|
| 50x150 mm | 90 mm | 12 pcs | | |
| 65x160 mm | 95 mm | 12 pcs | | |
| 70x170 mm | 95 mm | 12 pcs | | |

PROFESSIONAL Plafone **602**



| | |
|--------------|-------------------------------------|
| Absorption | <input checked="" type="checkbox"/> |
| Profiling | <input checked="" type="checkbox"/> |
| Finish | <input checked="" type="checkbox"/> |
| Time lasting | <input checked="" type="checkbox"/> |

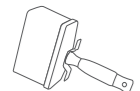
TECHNICAL CHARACTERISTICS:

Ceiling brush of natural bristles mixed with the high quality synthetic ones.

Time lasting and resistant, the best choice for the professionals who look for the reliable and high quality tool.

Moplen body is perfect for more resistance while immersed in water. Very light and resistant.

FORMATS AVAILABLE:



Single ceiling brush in box of 12 pz

241 Professional mini ceiling brush **S. PRO**

Professional ceiling brush of **high quality blond bristle**

| | | |
|--------------------|----------------------|---------|
| Water-based paints | quartz and silicates | primers |
|--------------------|----------------------|---------|



| s. 241 | | | | € |
|--------------------------------------|-----------|-------|--------|---|
| Bristle: Blond natural | 30x70 mm | 76 mm | 12 pcs | |
| Handle: Moplen extra light | 30x100 mm | 76 mm | 12 pcs | |
| Glue: Epoxy | 30x120 mm | 76 mm | 12 pcs | |

602 Professional ceiling brush **S. PRO**

Professional ceiling brush of **high quality blond bristle**

| | | |
|--------------------|----------------------|---------|
| Water-based paints | quartz and silicates | primers |
|--------------------|----------------------|---------|

| s. 602 | | | | € |
|---------------------------------------|-----------|-------|--------|---|
| Bristle: Blond natural | 50x150 mm | 83 mm | 12 pcs | |
| Handle: Moplen two-material | 65x160 mm | 90 mm | 12 pcs | |
| Glue: Epoxy | 70x170 mm | 90 mm | 12 pcs | |

PROFESSIONAL Plafone **601**



| | |
|--------------|-------------------------------------|
| Absorption | <input checked="" type="checkbox"/> |
| Profiling | <input checked="" type="checkbox"/> |
| Finish | <input checked="" type="checkbox"/> |
| Time lasting | <input checked="" type="checkbox"/> |

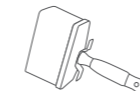
TECHNICAL CHARACTERISTICS:

Ceiling brush of natural bristles mixed with the high quality synthetic ones.

For the ones who like the quality without compromise. The time lasting tool, with the time proved performance.

Classic design, with wooden polished handle.

FORMATS AVAILABLE:



Single ceiling brush in box of 12 pz

601 Professional ceiling mini brush **S. PRO**

Professional ceiling brush of **high quality blond bristle**

| | | |
|--------------------|----------------------|---------|
| Water-based paints | quartz and silicates | primers |
|--------------------|----------------------|---------|



| s. 601 | | | | € |
|---------------------------------|-----------|-------|--------|---|
| Bristle: Blond PLUS | 30x70 mm | 76 mm | 12 pcs | |
| Handle: polished wood | 30x100 mm | 76 mm | 12 pcs | |
| Glue: Epoxy | 30x120 mm | 76 mm | 12 pcs | |
| | 40x140 mm | 83 mm | 12 pcs | |

601 Professional ceiling brush **S. PRO**

Professional ceiling brush of **high quality blond bristle**

| | | |
|--------------------|----------------------|---------|
| Water-based paints | quartz and silicates | primers |
|--------------------|----------------------|---------|

| s. 601 | | | | € |
|---------------------------------|-----------|-------|--------|---|
| Bristle: Blond plus | 50x150 mm | 83 mm | 12 pcs | |
| Handle: polished wood | 60x150 mm | 83 mm | 12 pcs | |
| Glue: Epoxy | 65x160 mm | 90 mm | 12 pcs | |
| | 70x170 mm | 90 mm | 12 pcs | |
| | 80x180 mm | 95 mm | 12 pcs | |

ESSENTIAL Ceiling brush 400



| | |
|--------------|-------------------------------------|
| Absorption | <input checked="" type="checkbox"/> |
| Profiling | <input checked="" type="checkbox"/> |
| Finish | <input checked="" type="checkbox"/> |
| Time lasting | <input checked="" type="checkbox"/> |

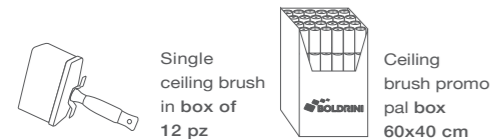
TECHNICAL CHARACTERISTICS:

Ceiling brush made of high quality synthetic bristles mixed with the natural ones for the better absorption.

Great value for money, good time lasting and perfect performance for both professional and DIY usage.

Moplen body is perfect for the better resistance while immersed in water. Very light and resistant.

FORMATS AVAILABLE:



400 Ceiling brush Essential 400

Good quality ceiling brush of natural and synthetic bristles mix

water-based and washable | base coats and foams | -



| s. 400 | | | | € |
|--------------------------------------|-----------|-------|-----------|---|
| Bristle: Blond MIX | 40x140 mm | 83 mm | 12 pcs | |
| Handle: Moplen extra light | 50x150 mm | 83 mm | 12 pcs | |
| Glue: Epoxy | 50x150 mm | 83 mm | p.box 120 | |

| s. 400 | | | | € |
|--------------------------------------|-----------|-------|-----------|---|
| Bristle: Blond MIX | 65x160 mm | 90 mm | 12 pcs | |
| Handle: Moplen extra light | 65x160 mm | 90 mm | p.box 120 | |
| Glue: Epoxy | 70x170 mm | 90 mm | 12 pcs | |

ESSENTIAL Ceiling brush 1000



| | |
|--------------|-------------------------------------|
| Absorption | <input checked="" type="checkbox"/> |
| Profiling | <input checked="" type="checkbox"/> |
| Finish | <input checked="" type="checkbox"/> |
| Time lasting | <input checked="" type="checkbox"/> |

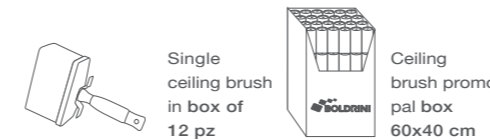
TECHNICAL CHARACTERISTICS:

Ceiling brush made of 100% synthetic bristles, mixed for obtaining the good money-for-performance.

Convenient and performant, is suitable for both professional and DIY usage.

Moplen body is perfect for more resistance while immersed in water. Very light and resistant.

FORMATS AVAILABLE:



1000 Ceiling mini brush Essential 1000

Ceiling mini brush of general synthetic bristle

water-based and washable | primers | enamels and varnishes



| s. 1000 | | | | € |
|--------------------------------------|-----------|-------|-----------|---|
| Bristle: Blond PLUS | 30x70 mm | 76 mm | 12 pcs | |
| | 30x70 mm | 76 mm | p.box 120 | |
| Handle: Moplen extra light | 30x100 mm | 76 mm | 12 pcs | |
| | 30x120 mm | 76 mm | 12 pcs | |
| Glue: Epoxy | 40x140 mm | 83 mm | 12 pcs | |

1000 Ceiling brush Essential 1000

Ceiling brush of general synthetic bristle

water-based and washable | quartz and silicate | base coats and foams



| s. 1000 | | | | € |
|---------------------------------------|-----------|-------|-----------|---|
| Bristle: Blond plus | 50x150 mm | 90 mm | 12 pcs | |
| | 50x150 mm | 90 mm | p.box 120 | |
| Handle: Moplen two-material | 65x160 mm | 90 mm | 12 pcs | |
| | 65x160 mm | 90 mm | p.box 120 | |
| Glue: Epoxy | 70x170 mm | 90 mm | 12 pcs | |

280 Professional Ceiling mini brush **Blond bristle** **PREMIUM**

High quality Ceiling mini brush, made of the best raw material. Perfect to apply:

water-based paint, primers | solvent-based products | quartz and silicates

INOX



| s. 280 INOX | | | | € |
|-------------------------------------------------|-----------|-------|--------|---|
| Bristle: Blond extra-long | 30x70 mm | 76 mm | 12 pcs | |
| | 30x100 mm | 76 mm | 12 pcs | |
| Handle: polished wood, LASER engraved | 30x120 mm | 76 mm | 12 pcs | |
| | 40x140 mm | 90 mm | 12 pcs | |
| Ferrule: INOX Steel | 50x150 mm | 90 mm | 12 pcs | |

31 Professional Ceiling mini brush **Blond bristle** **PREMIUM**

High quality Ceiling mini brush, made of the best raw material. Perfect to apply:

water-based paints | primers and varnishes | products for wood



| s. 31 | | | | € |
|-------------------------------------------------|-----------|-------|--------|---|
| Bristle: Blond extra-long | 30x70 mm | 76 mm | 12 pcs | |
| | 30x100 mm | 76 mm | 12 pcs | |
| Handle: polished wood, LASER engraved | 30x120 mm | 76 mm | 12 pcs | |
| | 40x140 mm | 90 mm | 12 pcs | |
| | 50x150 mm | 90 mm | 12 pcs | |
| Ferrule: copper | | | | |

397 Professional ceiling mini brush **ONYX**

High quality Ceiling mini brush of soft synthetic bristle

water-based enamel | water-based paint | wax-based products



| s. 397 | | | | € |
|--------------------------------------|-----------|-------|----|---|
| Bristle: 100% synthetic | 30x70 mm | 76 mm | 12 | |
| | 30x100 mm | 83 mm | 12 | |
| Handle: Moplen extra light | 30x120 mm | 83 mm | 12 | |
| Glue: Epoxy | | | | |

295 Professional Ceiling mini brush **SYNTEX**

High quality Ceiling mini brush of general synthetic bristle

water-based paint | primers | enamel and varnish



| s. 295 | | | | € |
|-----------------------------------|-----------|-------|----|---|
| Bristle: 100% synthetic | 30x70 mm | 80 mm | 12 | |
| | 30x100 mm | 80 mm | 12 | |
| Handle: polished wood | 30x120 mm | 80 mm | 12 | |
| Ferrule: Moplen | | | | |

294 Professional ceiling mini brush **SYNTEX**

High quality Ceiling mini brush of general synthetic bristle

water-based paint | primers | enamel and varnish



INOX

| s. 294 | | | | € |
|-----------------------------------|-----------|-------|----|---|
| Bristle: 100% synthetic | 30x70 mm | 80 mm | 12 | |
| | 30x100 mm | 80 mm | 12 | |
| Handle: polished wood | 30x120 mm | 80 mm | 12 | |
| Ferrule: INOX steel | | | | |

235 Blond bristle Ceiling mini brush **PROFESSIONAL**

Blond bristle professional Ceiling mini brush. Perfect to apply:

| | | |
|----------------------------|------------------------|----------------------|
| water-based paint, primers | solvent-based products | quartz and silicates |
|----------------------------|------------------------|----------------------|



| s. 235 | | | | € |
|--------|-----------|-------|--------|---|
| | 30x70 mm | 70 mm | 12 pcs | |
| | 30x100 mm | 70 mm | 12 pcs | |
| | 30x120 mm | 70 mm | 12 pcs | |
| | 40x140 mm | 76 mm | 12 pcs | |
| | 50x150 mm | 76 mm | 12 pcs | |

Bristle: Blond mixed
Handle: polished wood
Ferrule: Steel

270 Synthetic long bristle ceiling mini brush **ESSENTIAL**

Mixed synthetic bristle Ceiling mini brush. Perfect to apply:

| | | |
|----------------------------|--------------------|---|
| water-based paint, primers | enamel and varnish | - |
|----------------------------|--------------------|---|



| s. 270 | | | | € |
|--------|-----------|-------|--------|---|
| | 30x70 mm | 76 mm | 12 pcs | |
| | 30x100 mm | 76 mm | 12 pcs | |
| | 30x120 mm | 76 mm | 12 pcs | |
| | 40x140 mm | 90 mm | 12 pcs | |
| | 50x150 mm | 90 mm | 12 pcs | |

Bristle: Synthetic extra-long
Handle: polished wood
Ferrule/ Lath: Steel / plastic

237 Ceiling mini brush Synthetic bristle **ESSENTIAL**

Synthetic bristle Ceiling mini brush. Perfect to apply:

| | | |
|--------------------|---------|----------------|
| water-based paints | Primers | Sheaths etc... |
|--------------------|---------|----------------|



| s. 237 | | | | € |
|--------|-----------|-------|--------|---|
| | 30x70 mm | 70 mm | 12 pcs | |
| | 30x100 mm | 70 mm | 12 pcs | |
| | 30x120 mm | 70 mm | 12 pcs | |
| | 40x140 mm | 83 mm | 12 pcs | |
| | 50x150 mm | 83 mm | 12 pcs | |

Bristle: 100% synthetic
Handle: Plastic
Ferrule: Metal

331 Ceiling mini brush Synthetic bristle **HOBBY**

PVC Ceiling mini brush for DIY. Perfect to apply:

| | | |
|--------------------|------------------------|----------------|
| water-based paints | Base coat and fixative | Sheaths etc... |
|--------------------|------------------------|----------------|



| s. 331 | | | | € |
|--------|-----------|-------|--------|---|
| | 30x70 mm | 60 mm | 12 pcs | |
| | 30x100 mm | 60 mm | 12 pcs | |
| | 30x120 mm | 60 mm | 12 pcs | |
| | 40x140 mm | 65 mm | 12 pcs | |
| | 50x150 mm | 70 mm | 12 pcs | |

Bristle: PVC
Handle: Plastic
Ferrule: Metal

319/3 Refill handle for GUIPON

Handle made for fixing the Guipon refill



| s. 319/3 | | | € |
|----------------------------------|--------------|--------|---|
| Handle: Plastic | Misura unica | 12 pcs | |
| Stem: galvanized steel | | | |

319 Guipon round **refill only**

Guipon refill: brush for telescopic pole, with appropriate handle

Sizes available: 45 mm / 50 mm / 55 mm



| s. 319 | | | € |
|--------------------------|-------|--------|---|
| Bristle: Blond | 45 mm | 12 pcs | |
| Ferrule: Steel | 50 mm | 12 pcs | |
| Glue: Epoxy | 55 mm | 12 pcs | |

319/4 Guipon oval **refill only**

Guipon refill: brush for telescopic pole, with appropriate handle

Sizes available: 30x70 mm



| s. 319/4 | | | | | € |
|---------------------------|----------|-------|--------|--|---|
| Bristle: Blond | | | | | |
| Ferrule: Copper | 30x70 mm | 76 mm | 12 pcs | | |
| Glue: Epoxy | | | | | |

00035 Metal brush holder

Brush holder junction made of galvanized metal



| s. 00035 | | € |
|------------------------------------------------------------------------------------------|--------|---|
| Metal, brush handle junction. Suitable for brushes, ceiling brushes and mini brushes. | 12 pcs | |

19000 Professional junction

Professional brush holder junction made of resin



| s. 19000 | | € |
|-------------------------------------------------------------------------------------------------------------------------|--------|---|
| Resin made, brush handle junction. Suitable for brushes, ceiling brushes and mini brushes, rollers and mini rollers. | 12 pcs | |

00450 In league brush holder

Brush holder junction made of light league



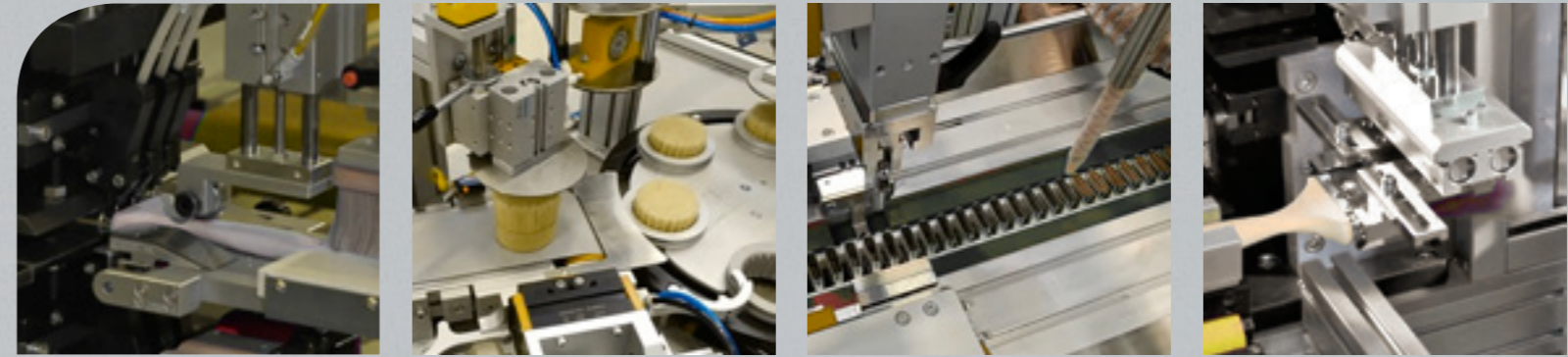
| s. 00450 | | € |
|------------------------------------------------------------------------------------------------------|--------|---|
| Light league made, brush handle junction. Suitable for brushes, ceiling brushed and mini brushes. | 15 pcs | |

65000 Plastic junction

Screw-type junction for ceiling brushes and mini brushes



| s. 65000 | | € |
|----------------------------------------------------------------------------------------|--------|---|
| Plastic made, brush handle junction. Suitable for ceiling brushes and mini brushes. | 12 pcs | |



3.
ENAMEL
BRUSHES

“ RELIABILITY AND
PRECISION



Enamel and varnish brush: Premium range

PREMIUM Brushes Premium



| | |
|-------------|-----------|
| Absorption | ■ ■ ■ ■ □ |
| Profiling | ■ ■ ■ ■ ■ |
| Finish | ■ ■ ■ ■ ■ |
| Versatility | ■ ■ ■ ■ ■ |

Quality: Premium brushes are the result of many years' experience in the field. New technologies made and highest quality synthetic bristles. Suitable for applying any type of paint, enamel or varnish.

Designed for the most exigent user, that seeks for the ultimate, as the quality and reliability.



Ferrule, made in **INOX steel and MOPLEN** makes it possible to avoid the oxidation and make the usage of the brush more lasting in time.

Ergonomic handles of polished wood and two-material plastic are made for more comfortable usage.

18 All-purpose brush **S. Gold**

High quality brush made of **synthetic bristle for all-purpose use**

water-based paints | water-based varnish | solvent-based varnish



| s. 18 | | | | € |
|-----------------------------------|----------|-------|--------|---|
| Bristle: 100% synthetic | 20x15 mm | 64 mm | 12 pcs | |
| | 30x15 mm | 64 mm | 12 pcs | |
| Handle: polished wood | 40x15 mm | 64 mm | 12 pcs | |
| | 50x15 mm | 70 mm | 12 pcs | |
| Ferrule: INOX steel | 60x15 mm | 70 mm | 12 pcs | |
| | 70x15 mm | 70 mm | 12 pcs | |

176 All-purpose brush **S. Gold +**

High quality brush made of **synthetic bristle for all-purpose use**

water-based paint | water-based varnish | solvent-based varnish



| s. 176 | | | | € |
|--------------------------------------------|----------|-------|--------|---|
| Bristle: 100% synthetic | 30x15 mm | 64 mm | 12 pcs | |
| | 40x15 mm | 64 mm | 12 pcs | |
| Handle: Two-component soft tools | 50x15 mm | 70 mm | 12 pcs | |
| | 60x15 mm | 70 mm | 12 pcs | |

Enamel and varnish brush: Premium range

195 Professional brush **20 mm**

High quality brush of **synthetic bristle for all-purpose use**

water-based enamel | water-based varnish | solvent-based varnish

▶ ◀
thickness
20 mm



| s. 195 | | | | € |
|--------------------------------------|----------|-------|--------|---|
| Bristle: General synthetic | 30x21 mm | 64 mm | 12 pcs | |
| | 40x22 mm | 64 mm | 12 pcs | |
| Handle: polished wood | 50x23 mm | 70 mm | 12 pcs | |
| | 60x24 mm | 70 mm | 12 pcs | |
| Ferrule: Moplen | 75x26 mm | 70 mm | 12 pcs | |

185 Professional brush with **blond bristle**

High quality brush of **selected blond bristle**

water-based paint | primers | solvent-based varnish



| s. 185 | | | | € |
|------------------------------------|----------|-------|--------|---|
| Bristle: Blond synthetic | 30x15 mm | 57 mm | 12 pcs | |
| | 40x15 mm | 57 mm | 12 pcs | |
| Handle: polished wood | 50x15 mm | 64 mm | 12 pcs | |
| | 60x15 mm | 64 mm | 12 pcs | |
| Ferrule: Moplen | 70x15 mm | 70 mm | 12 pcs | |

177 Professional brush with **blond bristle**

High quality brush of **100% synthetic bristle**

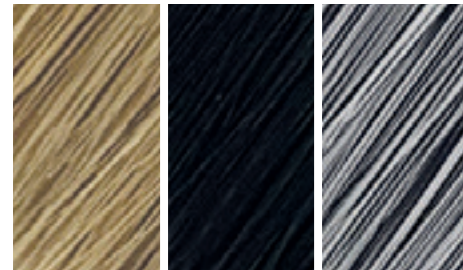
water-based paint | primer | solvent-based varnish



| s. 177 | | | | € |
|---------------------------------------------|----------|-------|--------|---|
| Bristle: 100% synthetic | 30x15 mm | 57 mm | 12 pcs | |
| | 40x15 mm | 57 mm | 12 pcs | |
| Handle: Two -component soft tools | 50x15 mm | 64 mm | 12 pcs | |
| | 60x15 mm | 64 mm | 12 pcs | |

Professional brushes for enamel and varnish: **Excel range**

EXCEL Brush **Excel**



| | |
|-------------|-------------------------------------|
| Absorption | <input checked="" type="checkbox"/> |
| Profiling | <input checked="" type="checkbox"/> |
| Finish | <input checked="" type="checkbox"/> |
| Versatility | <input checked="" type="checkbox"/> |

Quality: Excel brushes are the ones with the best raw materials: selection of the natural bristles and high quality synthetic filament are wisely mixed to obtain the best performance.

Designed for the most exigent user, that seeks a reliable brush, durable and with an excellent performance.



INOX steel ferrule avoid oxygenation and makes the usage of the brush more lasting in time.

Ergonomic handles, made of polished beech wood are designed to guarantee firm and comfortable grip.

118 Professional brush **20 mm**

High quality brush with **the selected blond bristles**

| | | |
|-------------------|--------|-----------------------|
| water-based paint | primer | solvent-based varnish |
|-------------------|--------|-----------------------|

INOX thickness **20 mm**



| s. 118 | | | | € |
|------------------------------------|------|-------|--------|---|
| Bristle: high quality blond | 1" | 57 mm | 12 pcs | |
| | 1,5" | 64 mm | 12 pcs | |
| Handle: polished wood | 2" | 64 mm | 12 pcs | |
| | 2,5" | 70 mm | 12 pcs | |
| Ferrule: INOX steel | 3" | 70 mm | 12 pcs | |

120 Professional brush **20 mm**

High quality brush with **the selected black bristles**

| | | |
|----------------------|-----------------------|---|
| solvent-based enamel | solvent-based varnish | - |
|----------------------|-----------------------|---|

INOX thickness **20 mm**



| s. 120 | | | | € |
|------------------------------------|------|-------|--------|---|
| Bristle: High quality black | 1" | 57 mm | 12 pcs | |
| | 1,5" | 57 mm | 12 pcs | |
| Handle: Polished wood | 2" | 64 mm | 12 pcs | |
| | 2,5" | 70 mm | 12 pcs | |
| Ferrule: INOX steel | 3" | 70 mm | 12 pcs | |

Professional brush for enamel and varnish: **Excel range**

80 Professional brush **blond bristle**

High quality brush with **selected blond bristles**

| | | |
|-------------------|--------|-----------------------|
| water-based paint | primer | solvent-based varnish |
|-------------------|--------|-----------------------|

INOX



| s. 80 | | | | € |
|------------------------------------|----------|-------|--------|---|
| Bristle: High quality blond | 20x15 mm | 51 mm | 12 pcs | |
| | 30x15 mm | 57 mm | 12 pcs | |
| Handle: polished wood | 40x15 mm | 57 mm | 12 pcs | |
| | 50x15 mm | 64 mm | 12 pcs | |
| | 60x15 mm | 64 mm | 12 pcs | |
| Ferrule: INOX steel | 70x15 mm | 70 mm | 12 pcs | |

60 Professional brush **black bristle**

High quality brush with **selected black bristles**

| | | |
|----------------------|-----------------------|---|
| solvent-based enamel | solvent-based varnish | - |
|----------------------|-----------------------|---|

INOX



| s. 60 | | | | € |
|------------------------------------|----------|-------|--------|---|
| Bristle: High quality black | 20x15 mm | 51 mm | 12 pcs | |
| | 30x15 mm | 57 mm | 12 pcs | |
| Handle: Polished wood | 40x15 mm | 57 mm | 12 pcs | |
| | 50x15 mm | 64 mm | 12 pcs | |
| | 60x15 mm | 64 mm | 12 pcs | |
| Ferrule: INOX steel | 70x15 mm | 70 mm | 12 pcs | |

16 Professional brush **synthetic bristle**

High quality brush for all-purpose use **with synthetic bristles**

| | | |
|--------------------|---------------------|---|
| water-based enamel | water-based varnish | - |
|--------------------|---------------------|---|

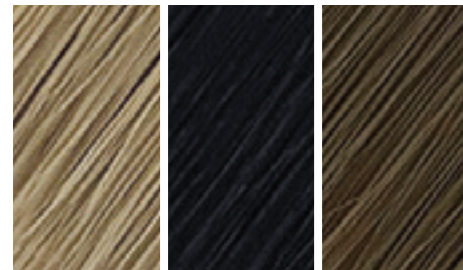
INOX



| s. 16 | | | | € |
|---------------------------------------|----------|-------|--------|---|
| Bristle: Synthetic all-purpose | 20x15 mm | 64 mm | 12 pcs | |
| | 30x15 mm | 64 mm | 12 pcs | |
| Handle: Polished wood | 40x15 mm | 64 mm | 12 pcs | |
| | 50x15 mm | 70 mm | 12 pcs | |
| | 60x15 mm | 70 mm | 12 pcs | |
| Ferrule: INOX steel | 70x15 mm | 70 mm | 12 pcs | |

Professional brushes for enamel and varnish: **Select range**

SELECT Brushes **Select**



| | |
|-------------|--------------------------|
| Absorption | <input type="checkbox"/> |
| Profiling | <input type="checkbox"/> |
| Finish | <input type="checkbox"/> |
| Versatility | <input type="checkbox"/> |

Quality: Products made of good quality selected raw materials, Select range brushes guarantee a value for money.

Optimal performance that fits all fields of use. Perfect for all-days use by professionals and hobbyists.

Essential in any assortment, Select brushes guarantee the perfect balance between the price and performance.

112 Professional brush **20 mm**

Professional brush with **blond bristle**

| | | |
|-------------------|--------|-----------------------|
| water-based paint | primer | solvent-based varnish |
|-------------------|--------|-----------------------|

thickness
20 mm



114 Professional brush **20 mm**

Professional brush with **black bristle**

| | | |
|----------------------|-----------------------|---|
| solvent-based enamel | solvent-based varnish | - |
|----------------------|-----------------------|---|

thickness
20 mm



| s. 112 | | | | € |
|---------------------------------|------|-------|--------|---|
| Bristle: Blond mixed | 1" | 51 mm | 12 pcs | |
| | 1,5" | 57 mm | 12 pcs | |
| Handle: Polished wood | 2" | 64 mm | 12 pcs | |
| | 2,5" | 70 mm | 12 pcs | |
| Ferrule: Steel | 3" | 70 mm | 12 pcs | |

| s. 114 | | | | € |
|---------------------------------|------|-------|--------|---|
| Bristle: Black mixed | 1" | 51 mm | 12 pcs | |
| | 1,5" | 57 mm | 12 pcs | |
| Handle: Polished wood | 2" | 64 mm | 12 pcs | |
| | 2,5" | 70 mm | 12 pcs | |
| Ferrule: Steel | 3" | 70 mm | 12 pcs | |

Professional brushes for enamel and varnishes: **Select range**

50 Professional brush **blond bristle**

Professional brush with **blond bristle**

| | | |
|-------------------|--------|-----------------------|
| water-based paint | primer | solvent-based varnish |
|-------------------|--------|-----------------------|



40 Professional brush **black bristle**

Professional brush with **black bristle**

| | | |
|-----------------------|-----------------------|---|
| solvent-based enamels | solvent-based varnish | - |
|-----------------------|-----------------------|---|



89 Professional brush **orel**

Professional brush **for primers and finish on wood**

| | | |
|---------|---------------------|-----------------------|
| primers | water-based varnish | solvent-based varnish |
|---------|---------------------|-----------------------|



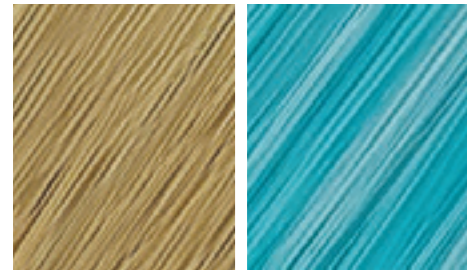
| s. 50 | | | € | | | € |
|---------------------------------|-------|-------|---|-----------------|-------|---|
| Bristle: Blond mixed | 20x15 | 51 mm | | 70x15 | 70 mm | |
| | 30x15 | 51 mm | | 80x15 | 70 mm | |
| Handle: Polished wood | 40x15 | 57 mm | | 90x15 | 70 mm | |
| | 50x15 | 64 mm | | 100x15 | 70 mm | |
| | 60x15 | 64 mm | | * packed 12 pcs | | |

| s. 40 | | | € | | | € |
|---------------------------------|-------|-------|---|-----------------|-------|---|
| Bristle: Black mixed | 20x15 | 44 mm | | 70x15 | 70 mm | |
| | 30x15 | 51 mm | | 80x15 | 70 mm | |
| Handle: Polished wood | 40x15 | 57 mm | | 90x15 | 70 mm | |
| | 50x15 | 64 mm | | 100x15 | 70 mm | |
| | 60x15 | 64 mm | | * packed 12 pcs | | |

| s. 89 | | | | € |
|-----------------------------------|------|-------|--------|---|
| Bristle: Synthetic Orel | 1,5" | 64 mm | 12 pcs | |
| | 2" | 64 mm | 12 pcs | |
| Handle: Polished wood | 2,5" | 64 mm | 12 pcs | |
| | 3" | 64 mm | 12 pcs | |

Brushes for enamels and varnishes: **Essential range**

ESSENTIAL Brushes Essential



| | |
|-------------|--------------------------|
| Absorption | <input type="checkbox"/> |
| Profiling | <input type="checkbox"/> |
| Finish | <input type="checkbox"/> |
| Versatility | <input type="checkbox"/> |

Quality: Essential range brushes are the products for satisfy the private user's needs, with the guarantee of optimal performance and low price.

It is available in 2 versions, good both for the water-based enamels and varnishes, as for solvent-based products.



EcoWood handle: exclusive handle of ecowood is the product of recycled wood pulp, that anyway guarantees the feeling of using the natural wooden handle, recycling the materials, that normally are to be wasted.

52 Blond bristle brush **EcoWood**

Brush for water-based paints and enamels, with wood pulp handle

| | | |
|-------------------|---------|------------------------|
| water-based paint | primers | solvent-based products |
|-------------------|---------|------------------------|



| s. 52 | | | | € |
|-----------------------------|-------|-------|--------|---|
| Bristle: mixed blond | 30 mm | 57 mm | 12 pcs | |
| | 40 mm | 57 mm | 12 pcs | |
| Handle: EcoWood | 50 mm | 64 mm | 12 pcs | |
| | 60 mm | 64 mm | 12 pcs | |
| Ferrule: Steel | 70 mm | 70 mm | 12 pcs | |

51 Synthetic bristle brush **EcoWood**

Brush for water-based enamels, with wood pulp handle

| | | |
|---------------------|---------------------|---|
| water-based enamels | water-based varnish | - |
|---------------------|---------------------|---|



| s. 51 | | | | € |
|--------------------------------|-------|-------|--------|---|
| Bristle: Synthetic 100% | 30 mm | 64 mm | 12 pcs | |
| | 40 mm | 64 mm | 12 pcs | |
| Handle: EcoWood | 50 mm | 70 mm | 12 pcs | |
| | 60 mm | 70 mm | 12 pcs | |
| Ferrule: Steel | 70 mm | 70 mm | 12 pcs | |

Brushes for enamels and varnishes: **Hobby range**

515 Plastic handle brush

Plastic handle and ferrule brush, with **blond bristle**

| | | |
|--------------------|---------|-----------------------|
| water-based paints | primers | solvent-based varnish |
|--------------------|---------|-----------------------|



| s. 515 | | | | € |
|------------------------|----------|-------|--------|---|
| Bristle: Blond | 30x15 mm | 51 mm | 12 pcs | |
| | 40x15 mm | 51 mm | 12 pcs | |
| Handle: Plastic | 50x15 mm | 57 mm | 12 pcs | |
| | 60x15 mm | 57 mm | 12 pcs | |
| Ferrule: Moplen | 70x15 mm | 64 mm | 12 pcs | |

502 Plastic handle brush

Plastic handle and brass ferrule brush with **blond bristle**

| | | |
|--------------------|---------|---|
| water-based paints | primers | - |
|--------------------|---------|---|



| s. 502 | | | € | | | € |
|-------------------------|-------|-------|---|--------------------|-------|---|
| Bristle: Blond | 20x15 | 44 mm | | 70x15 | 64 mm | |
| | 30x15 | 44 mm | | 80x15 | 64 mm | |
| Handle: Plastic | 40x15 | 51 mm | | 90x15 | 64 mm | |
| | 50x15 | 57 mm | | 100x15 | 64 mm | |
| Ferrule: Brushed | 60x15 | 57 mm | | * packed of 12 pcs | | |

314 Plastic handle brush

Plastic handle brush with **blond bristle**

| | | |
|-------------------|---|---|
| water-based paint | - | - |
|-------------------|---|---|



S.31489
Set of 3 brushes
(sizes 20/30/50) € 3,50

| s. 314 | | | € | | | € |
|------------------------|-------|-------|---|--------------------|-------|---|
| Bristle: Blond | 20x15 | 44 mm | | 70x15 | 57 mm | |
| | 30x15 | 44 mm | | 80x15 | 57 mm | |
| Handle: Plastic | 40x15 | 51 mm | | 90x15 | 57 mm | |
| | 50x15 | 57 mm | | 100x15 | 57 mm | |
| Ferrule: Metal | 60x15 | 57 mm | | * packed of 12 pcs | | |

70 Blond bristle brush 10 mm

Blond bristle brush, 10 mm thickness

thickness
10 mm



71 Blond bristle brush 5 mm

Blond bristle brush, thickness 5 mm

thickness
5 mm



75 Hard nylon brush

Nylon hard bristle brush, thickness 10 mm



| s. 70 | | | € | | | € |
|--------------------------|-------|-------|---|--------------------|-------|---|
| Bristle: Blond | 20x10 | 51 mm | | 70x10 | 64 mm | |
| | 30x10 | 51 mm | | 80x10 | 70 mm | |
| | 40x10 | 57 mm | | 90x10 | 70 mm | |
| Handle: Polished wood | 50x10 | 57 mm | | 100x10 | 70 mm | |
| | 60x10 | 64 mm | | * packed of 12 pcs | | |

| s. 71 | | | € | | | € |
|--------------------------|------|-------|---|--------------------|-------|---|
| Bristle: Blond | 20x5 | 51 mm | | 70x5 | 64 mm | |
| | 30x5 | 51 mm | | 80x5 | 70 mm | |
| | 40x5 | 57 mm | | 90x5 | 70 mm | |
| Handle: Polished wood | 50x5 | 57 mm | | 100x5 | 70 mm | |
| | 60x5 | 64 mm | | * packed of 12 pcs | | |

| s. 75 | | | € | | | € |
|--------------------------|-------|-------|---|--------------------|-------|---|
| Bristle: Nylon | 20x10 | 45 mm | | 70x10 | 55 mm | |
| | 30x10 | 45 mm | | 80x10 | 60 mm | |
| | 40x10 | 45 mm | | 90x10 | 60 mm | |
| Handle: Polished wood | 50x10 | 50 mm | | - | - | - |
| | 60x10 | 50 mm | | * packed of 12 pcs | | |

2000 Wallpaper brush without handle

Wallpaper brush, sizes: 2x15 cm 2x30 cm 6x30 cm



| s 2000 | | | € |
|-------------------|---------|-------|---|
| Bristle: Blond | 2x15 cm | 1 pcs | |
| | 2x30 cm | 1 pcs | |
| | 6x30 cm | 1 pcs | |

2025 Wallpaper brush with handle

Wallpaper brush, sizes: 3x17 cm



10503 Twisted brush with handle



| art. | | | € |
|-------|---------------------------|-------|---|
| 2025 | 3x17 cm | 1 pcs | |
| 10503 | twisted brush with handle | 1 pcs | |

2040 Blond bristle Beating-brush, 15x15

Blond bristle beating-brush



| art. | | | € |
|------|------------------------|-------|---|
| 2040 | beating-brush 15x15 cm | 1 pcs | |

93 Radiator brush

ESSENTIAL

Blond bristle radiator brush

| | |
|------------|-------------------------------------|
| Absorption | <input checked="" type="checkbox"/> |
| Finishing | <input checked="" type="checkbox"/> |
| Duration | <input checked="" type="checkbox"/> |



94 Radiator brush

SELECT

Professional radiator brush of blond bristle

| | |
|------------|-------------------------------------|
| Absorption | <input checked="" type="checkbox"/> |
| Finish | <input checked="" type="checkbox"/> |
| Duration | <input checked="" type="checkbox"/> |



95 Radiator brush

EXCELL

High quality radiator brush of blond bristle

| | |
|------------|-------------------------------------|
| Absorption | <input checked="" type="checkbox"/> |
| Finish | <input checked="" type="checkbox"/> |
| Duration | <input checked="" type="checkbox"/> |



| s. 93 | | | | € |
|---------------------------------|-------|-------|--------|---|
| Bristle: Blond Mix | 20 mm | 47 mm | 12 pcs | |
| | 30 mm | 51 mm | 12 pcs | |
| Handle: Polished wood | 40 mm | 57 mm | 12 pcs | |
| | 50 mm | 57 mm | 12 pcs | |
| | 60 mm | 57 mm | 12 pcs | |
| Ferrule: Steel | 60 mm | 57 mm | 12 pcs | |
| | 70 mm | 64 mm | 12 pcs | |

| s. 94 | | | | € |
|---------------------------------|-------|-------|--------|---|
| Bristle: Blond Pro | 20 mm | 51 mm | 12 pcs | |
| | 30 mm | 51 mm | 12 pcs | |
| Handle: Polished wood | 40 mm | 57 mm | 12 pcs | |
| | 50 mm | 64 mm | 12 pcs | |
| | 60 mm | 64 mm | 12 pcs | |
| Ferrule: Steel | 60 mm | 64 mm | 12 pcs | |
| | 70 mm | 70 mm | 12 pcs | |

| s. 95 | | | | € |
|---------------------------------|-------|-------|--------|---|
| Bristle: Blond TOP | 20 mm | 51 mm | 12 pcs | |
| | 30 mm | 57 mm | 12 pcs | |
| Handle: Polished wood | 40 mm | 64 mm | 12 pcs | |
| | 50 mm | 70 mm | 12 pcs | |
| | 60 mm | 70 mm | 12 pcs | |
| Ferrule: INOX steel | 60 mm | 70 mm | 12 pcs | |
| | 70 mm | 70 mm | 12 pcs | |

36 Radiator brush

EXCELL

Radiator brush of 100% natural selected bristle

| | |
|------------|-------------------------------------|
| Absorption | <input checked="" type="checkbox"/> |
| Finish | <input checked="" type="checkbox"/> |
| Duration | <input checked="" type="checkbox"/> |



18 Radiator brush

PREMIUM

Professional radiator brush of synthetic universal bristle

| | |
|------------|-------------------------------------|
| Absorption | <input checked="" type="checkbox"/> |
| Finish | <input checked="" type="checkbox"/> |
| Duration | <input checked="" type="checkbox"/> |



96 Radiator brush

EXCELL

Professional radiator brush of synthetic bristle

| | |
|------------|-------------------------------------|
| Absorption | <input checked="" type="checkbox"/> |
| Finish | <input checked="" type="checkbox"/> |
| Duration | <input checked="" type="checkbox"/> |



| s. 36 | | | | € |
|---------------------------------|-------|-------|--------|---|
| Bristle: Natural 100% | 20 mm | 51 mm | 12 pcs | |
| | 30 mm | 57 mm | 12 pcs | |
| Handle: Polished wood | 40 mm | 64 mm | 12 pcs | |
| | 50 mm | 64 mm | 12 pcs | |
| | 60 mm | 70 mm | 12 pcs | |
| Ferrule: INOX steel | 60 mm | 70 mm | 12 pcs | |
| | 70 mm | 70 mm | 12 pcs | |

| s. 18 | | | | € |
|----------------------------------|-------|-------|--------|---|
| Bristle: Synthetic TOP | 20 mm | 64 mm | 12 pcs | |
| | 30 mm | 64 mm | 12 pcs | |
| Handle: Polished wood | 40 mm | 64 mm | 12 pcs | |
| | 50 mm | 70 mm | 12 pcs | |
| | 60 mm | 70 mm | 12 pcs | |
| Ferrule: INOX steel | 60 mm | 70 mm | 12 pcs | |
| | 70 mm | 70 mm | 12 pcs | |

| s. 96 | | | | € |
|-----------------------------------|-------|-------|--------|---|
| Bristle: Synthetic 100% | 20 mm | 64 mm | 12 pcs | |
| | 30 mm | 64 mm | 12 pcs | |
| Handle: Polished wood | 40 mm | 64 mm | 12 pcs | |
| | 50 mm | 70 mm | 12 pcs | |
| | 60 mm | 70 mm | 12 pcs | |
| Ferrule: INOX steel | 60 mm | 70 mm | 12 pcs | |
| | 70 mm | 70 mm | 12 pcs | |

560 Radiator brush



Radiator brush of blond bristle, thickness 15 mm

| | |
|------------|--------------------------|
| Absorption | <input type="checkbox"/> |
| Finish | <input type="checkbox"/> |
| Duration | <input type="checkbox"/> |



thickness
15 mm

102 Radiator brush



Radiator brush of blond bristle, 20 mm thickness

| | |
|------------|--------------------------|
| Absorption | <input type="checkbox"/> |
| Finish | <input type="checkbox"/> |
| Duration | <input type="checkbox"/> |



INOX

thickness
20 mm

189 Radiator brush



Radiator brush of blond bristle, 15 mm thickness

| | |
|------------|--------------------------|
| Absorption | <input type="checkbox"/> |
| Finish | <input type="checkbox"/> |
| Duration | <input type="checkbox"/> |



thickness
15 mm

| s. 560 | | | | € |
|---------------------------------|-------|-------|--------|---|
| Bristle: Blond Top | 30 mm | 57 mm | 12 pcs | |
| | 40 mm | 57 mm | 12 pcs | |
| Handle: Polished wood | 50 mm | 64 mm | 12 pcs | |
| | 60 mm | 64 mm | 12 pcs | |
| | 70 mm | 70 mm | 12 pcs | |
| Ferrule: coppered | | | | |

| s. 102 | | | | € |
|---------------------------------|------|-------|--------|---|
| Bristle: Blond Top | 1,5" | 57 mm | 12 pcs | |
| | 2" | 64 mm | 12 pcs | |
| Handle: Polished wood | 2,5" | 70 mm | 12 pcs | |
| | 3" | 70 mm | 12 pcs | |
| | | | | |
| Ferrule: INOX steel | | | | |

| s. 189 | | | | € |
|---------------------------------|-------|-------|--------|---|
| Bristle: Blond Top | 30 mm | 57 mm | 12 pcs | |
| | 40 mm | 64 mm | 12 pcs | |
| Handle: Polished wood | 50 mm | 64 mm | 12 pcs | |
| | 60 mm | 64 mm | 12 pcs | |
| | 70 mm | 70 mm | 12 pcs | |
| Ferrule: Moplen | | | | |

92 Radiator brush



Pipe-shaped radiator brush

| | |
|------------|--------------------------|
| Absorption | <input type="checkbox"/> |
| Finish | <input type="checkbox"/> |
| Duration | <input type="checkbox"/> |



101 Radiator brush



Radiator brush with metal handle

| | |
|------------|--------------------------|
| Absorption | <input type="checkbox"/> |
| Finish | <input type="checkbox"/> |
| Duration | <input type="checkbox"/> |



| s. 92 | | | € |
|---------------------------------|----|--------|---|
| Bristle: Blond mixed | 6 | 12 pcs | |
| | 8 | 12 pcs | |
| Handle: Polished wood | 10 | 12 pcs | |
| | 12 | 12 pcs | |
| | 14 | 12 pcs | |
| | 16 | 12 pcs | |
| Ferrule: Steel | | | |

| s. 101 | | | € |
|------------------------------------------|-------|--------|---|
| Bristle: Blond mixed | 20 mm | 12 pcs | |
| | 30 mm | 12 pcs | |
| Handle: metal with wooden part | 40 mm | 12 pcs | |
| | 50 mm | 12 pcs | |
| | 60 mm | 12 pcs | |
| Ferrule: Steel | | | |

21 Oval brush

Oval brush with plastic handle and blond bristle



28 Oval brush

Oval brush with wooden handle and high quality blond bristle



317 "Strozzato"

"Strozzato" with plastic handle and blond bristle



310 "Strozzato"

"Strozzato" with plastic handle and blond bristle



312 "Strozzato"

"Strozzato" with wooden handle and high quality blond bristle



| art. | description | | 2 | 4 | 6 | 8 | 10 | 12 | 14 | 16 | 18 | 20 | 22 | 24 | 26 | 30 | |
|------|--------------------------------|---|---|---|---|---|----|----|----|----|----|----|----|----|----|----|--------|
| 21 | Oval brush with blond bristle | € | | | | | | | | | | | | | | | 12 pcs |
| 28 | Oval brush with blond bristle | € | | | | | | | | | | | | | | | 12 pcs |
| 317 | "Strozzato" with blond bristle | € | | | | | | | | | | | | | | | 12 pcs |
| 310 | "Strozzato" with blond bristle | € | | | | | | | | | | | | | | | 12 pcs |
| 312 | "Strozzato" with blond bristle | € | | | | | | | | | | | | | | | 12 pcs |

230 Oval brush "swiss style"

Oval brush "swiss style" High quality black bristle and wooden handle



228 Oval brush "swiss style"

Oval brush "swiss style" High quality blond bristle and wooden handle



201 Round brush

Round brush with black bristle and wooden handle



215.217 Plinth type brush

Round brush with blond bristle and wooden handle



| s. 230 | | | € |
|------------------------------|------|--------|---|
| Bristle: Black | 1,5" | 12 pcs | |
| Handle: Polished wood | 2" | 12 pcs | |
| Ferrule: Steel | 2,5" | 12 pcs | |

| s. 228 | | | € |
|------------------------------|------|--------|---|
| Bristle: Blond | 1,5" | 12 pcs | |
| Handle: Polished wood | 2" | 12 pcs | |
| Ferrule: Steel | 2,5" | 12 pcs | |

| s. 201 | | | € |
|------------------------------|----|--------|---|
| Bristle: Black | 25 | 12 pcs | |
| | 30 | 12 pcs | |
| Handle: Polished wood | 35 | 12 pcs | |
| | 40 | 12 pcs | |
| | 45 | 12 pcs | |
| Ferrule: Steel | 50 | 12 pcs | |

| s. 215/17 | | | € |
|------------------------------|---------|--------|---|
| Bristle: Blond | 40 (10) | 12 pcs | |
| | 45 (12) | 12 pcs | |
| Handle: Polished wood | 50 (14) | 12 pcs | |
| | 60 (16) | 12 pcs | |

4130 Blond brush

Blond brush for lines

4131 Black brush

Black brush for lines

219 Pouces

Blond pouces brush

220 Rechampire

Blond rechampire brush

4148 'Muccino'

'Muccino' with blond bristle

309



| art. | description | € | 000 | 0 | 1 | 2 | 3 | 4 | 5 | 6 | 7 | 8 | 9 | 10 | 12 | 14 | 16 | 18 | 20 | 22 | 24 | 26 | 28 | 30 | 12 pcs |
|------|-------------------------------|---|-----|---|---|---|---|---|---|---|---|---|---|----|----|----|----|----|----|----|----|----|----|----|--------|
| 309 | Stencil brush | € | | | | | | | | | | | | | | | | | | | | | | | 12 pcs |
| 4130 | Blond brush for lines | € | | | | | | | | | | | | | | | | | | | | | | | 12 pcs |
| 4131 | Black brush for lines | € | | | | | | | | | | | | | | | | | | | | | | | 12 pcs |
| 219 | Blond bristle Pouces brush | € | | | | | | | | | | | | | | | | | | | | | | | 12 pcs |
| 220 | Rechampire with blond bristle | € | | | | | | | | | | | | | | | | | | | | | | | 12 pcs |
| 4148 | Muccino with blond bristle | € | | | | | | | | | | | | | | | | | | | | | | | 12 pcs |

3010

Round 'Astuccino'

3015

Flat 'Astuccino'

4010

Round 'Astuccino'

4015

Flat 'Astuccino'

715

Straight 'Piattina'

716

Angled 'Piattina'

714

Oblique 'Piattina'



| art. | description | € | 4 | 6 | 8 | 10 | 12 | 14 | 15 | 16 | 18 | 20 | 22 | 24 | 25 | 26 | 28 | 30 | 32 | 12 pcs | |
|------|---------------------------------|---|---|---|---|----|----|----|----|----|----|----|----|----|----|----|----|----|----|--------|--------|
| 3010 | Blond bristle round Astuccino | € | | | | | | | | | | | | | | | | | | | 12 pcs |
| 3015 | Blond bristle flat Astuccino | € | | | | | | | | | | | | | | | | | | | 12 pcs |
| 4010 | Black bristle round Astuccino | € | | | | | | | | | | | | | | | | | | | 12 pcs |
| 4015 | Black bristle flat Astuccino | € | | | | | | | | | | | | | | | | | | | 12 pcs |
| 715 | Black bristle straight Piattina | € | | | | | | | | | | | | | | | | | | | 12 pcs |
| 716 | Black bristle angled Piattina | € | | | | | | | | | | | | | | | | | | | 12 pcs |
| 714 | Black bristle oblique Piattina | € | | | | | | | | | | | | | | | | | | | 12 pcs |

573

Round Gold syntex



572

Flat Gold syntex



907

Round Syntex



909

Flat Syntex



904



Ox hair brush for writing



905

Ox hair brush with short handle



| art. | description |  | 000 | 00 | 0 | 1 | 2 | 3 | 4 | 5 | 6 | 7 | 8 | 9 | 10 | 12 | 14 | 16 |  |
|------|-----------------------------------|-------------------------------------------------------------------------------------|-----|----|---|---|---|---|---|---|---|---|---|---|----|----|----|----|---------------------------------------------------------------------------------------|
| 573 | Round Gold syntex | € | | | | | | | | | | | | | | | | | 12 pcs |
| 572 | Flat Gold syntex | € | | | | | | | | | | | | | | | | | 12 pcs |
| 907 | Round Syntex | € | | | | | | | | | | | | | | | | | 12 pcs |
| 909 | Flat Syntex | € | | | | | | | | | | | | | | | | | 12 pcs |
| 904 | Ox hair brush for writing | € | | | | | | | | | | | | | | | | | 12 pcs |
| 905 | Ox hair round brush, short handle | € | | | | | | | | | | | | | | | | | 12 pcs |

903

Ox hair flat brush, long handle



902

Ox hair round brush, long handle



577

Flat Eterna, short handle



766

Round Eterna, short handle



579

Flat Eterna, long handle





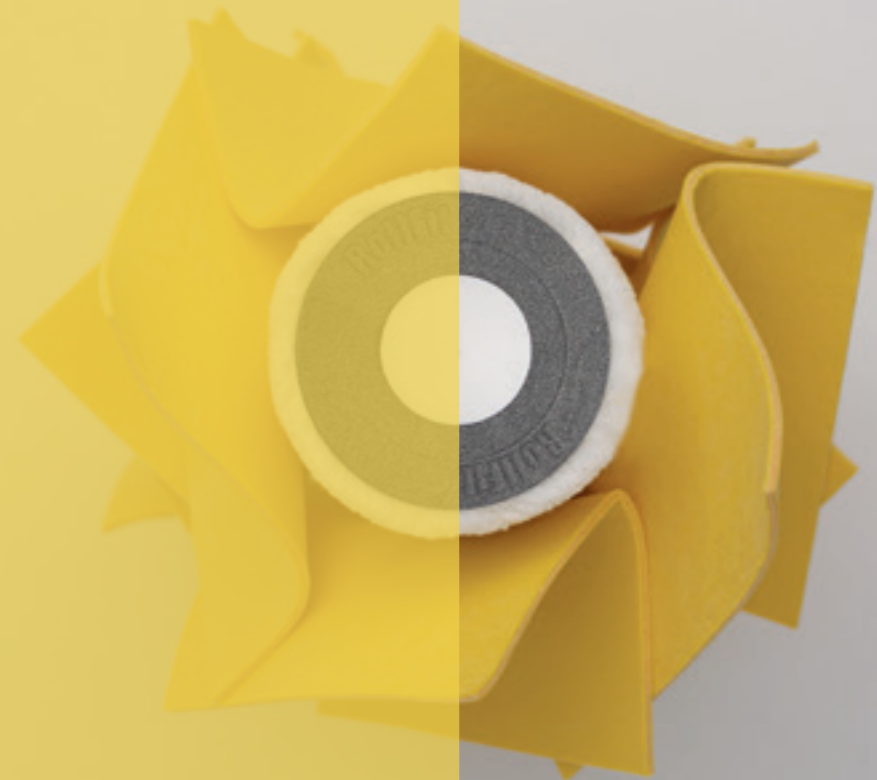
582

Round Eterna, long handle



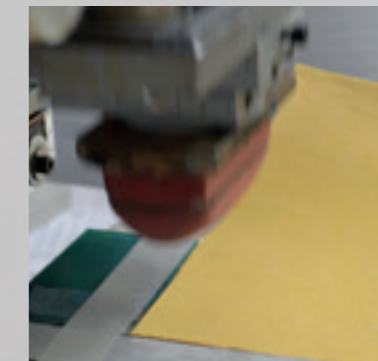
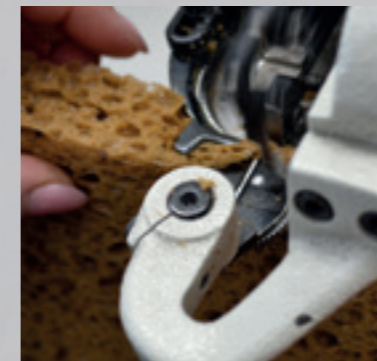
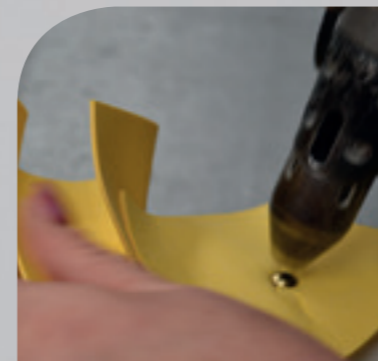
S.76699

| art. | description |  | 000 | 00 | 0 | 1 | 2 | 3 | 4 | 5 | 6 | 7 | 8 | 9 | 10 | 12 | 14 | 16 | 18 | 20 | 22 | 24 | 26 |  |
|------|----------------------------------|---------------------------------------------------------------------------------------|-----|----|---|---|---|---|---|---|---|---|---|---|----|----|----|----|----|----|----|----|----|---------------------------------------------------------------------------------------|
| 903 | Flat ox hair brush, long handle | € | | | | | | | | | | | | | | | | | | | | | | 12 pcs |
| 902 | Round ox hair brush, long handle | € | | | | | | | | | | | | | | | | | | | | | | 12 pcs |
| 577 | Flat Eterna, short handle | € | | | | | | | | | | | | | | | | | | | | | | 12 pcs |
| 766 | Round Eterna, short handle | € | | | | | | | | | | | | | | | | | | | | | | 12 pcs |
| 579 | Flat Eterna long handle | € | | | | | | | | | | | | | | | | | | | | | | 12 pcs |
| 582 | Round Eterna, long handle | € | | | | | | | | | | | | | | | | | | | | | | 12 pcs |



Effects No limits

“ THE ORIGINAL ONES
MOST LOVED AND IMITATED



4.
DECORATIVE
TOOLS

98 Spalter **Blond bristle**

Spalter for decoration, selected blond bristle



85 Spalter **Synthetic bristle**

Spalter for decoration, extra soft synthetic bristle



98025/40 Spalter **thickness 20 mm**

Spalter for decoration made of synthetic bristle, thickness 20 mm



| art. | description | | | € |
|--------|--------------------------------------------------|--------|--------|---|
| 98-070 | Spalter for decoration thickness 10 mm | 70 mm | 12 pcs | |
| 98-100 | | 100 mm | 12 pcs | |
| 98-120 | Blond bristle | 120 mm | 12 pcs | |
| 98-150 | Short wooden handle | 150 mm | 12 pcs | |

| art. | description | | | € |
|--------|--------------------------------------------------|------------------------|--------|---|
| 85-070 | Spalter for decoration thickness 10 mm | 70 mm | 12 pcs | |
| | | Soft synthetic bristle | | |
| 85-100 | Short wooden handle | 100 mm | 12 pcs | |

| art. | description | | | € |
|--------|--------------------------------------------------|-------------------|-------|---|
| 98-025 | Spalter for decoration thickness 20 mm | 2,5" | 6 pcs | |
| | | Synthetic bristle | | |
| 98-040 | Short wooden handle | 4" | 6 pcs | |

98026/41 Spalter **thickness 20 mm**

Spalter for decoration with long bristles, thickness 20 mm



| art. | description | | | € |
|--------|--------------------------------------------------|---------------------|-------|---|
| 98-026 | Spalter for decoration thickness 20 mm | 2,5" | 6 pcs | |
| | | Extra long bristles | | |
| 98-041 | Short wooden handle | 4" | 6 pcs | |

99 Spalter **Blond bristle**

Spalter for decoration, with long handle



| art. | description | | | € |
|--------|--------------------------------------------------|----------------|--------|--------|
| 99-100 | Spalter for decoration thickness 10 mm | 100 mm | 12 pcs | |
| 99-120 | | Blond bristles | 120 mm | 12 pcs |
| 99-150 | Long wooden handle | 150 mm | 12 pcs | |

68 Brush **for glazing**

Glazing brush, made of selected blond bristles



| art. | description | | | € |
|-------|-------------------------------------------------|-------------|-----------|-------|
| 68002 | Glazing brush Selected blond bristles | 30x100 mm | 1 pcs | |
| 68012 | | Wooden body | 65x160 mm | 1 pcs |

432 Polycarbonate trowel **X PRO**

Trapezoidal plastic trowel, for resins and decorative products



434/426 Polycarbonate trowel **X PRO**

Special shaped trawels, for resins and decorative products



624 Polycarbonate trowel **FLEX PRO**

Trapezoidal super flexible, polycarbonate blade



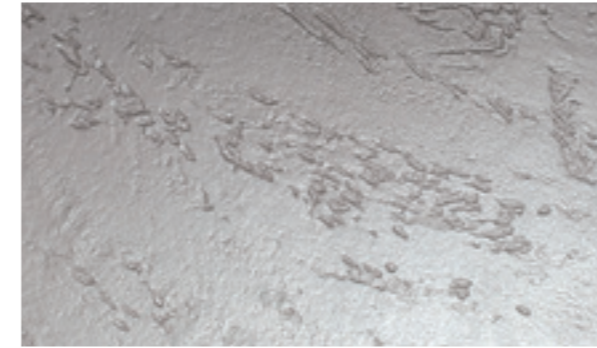
| art. | description | dim. | | € |
|-------|-------------------------------------------------------------------|-------------|-------|---|
| 43200 | Trowel X PRO trapezoidal made of polycarbonate | 20x8 cm | 6 pcs | |
| 43201 | Rounded corners and blunt profile made for the best coating | 24x10 cm | 6 pcs | |

| art. | description | dim. | | € |
|-------|-----------------------------------------------------------------------|-------------|-------|---|
| 43400 | Polygonal trowel made of polycarbonate | - | 6 pcs | |
| 42600 | Rectangular trowel made of polycarbonate rounded corners | 22x10 cm | 6 pcs | |

| art. | description | dim. | | € |
|-------|-------------------------------------------------------------|-------------|-------|---|
| 62400 | Trowel FLEX PRO made of flexible polycarbonate | 20x8 cm | 6 pcs | |
| 62401 | Trapezoidal blade Soft tools Handle | 24x10 cm | 6 pcs | |

49502/03 Trowel **FRAME**

Trowel for textured effects, polyurethane handle



| art. | description | dim. | | € |
|-------|--------------------------------------------------|-------------|-------|---|
| 49503 | Trowel FRAME for the textured effects. | 12x12 cm | 6 pcs | |
| 49502 | Polyurethane handle | 20x12 cm | 6 pcs | |

49500 Trowel **FRAME PRO**

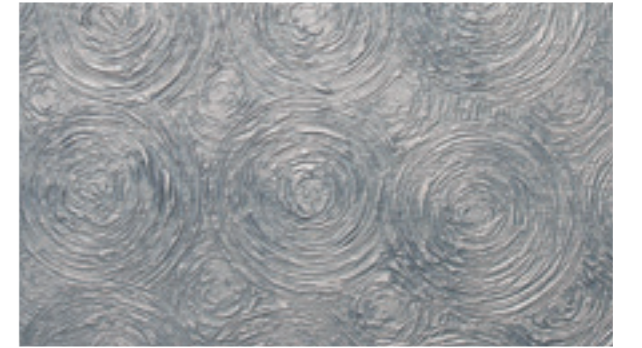
Trowel for textured effects, SOFT tools Handle



| art. | description | dim. | | € |
|-------|-----------------------------------------------------------------------------------------------------------------------|-------------|-------|---|
| 49500 | Trowel FRAME for the textured effects. Professional handle Soft tools, with the aluminium support. | 15x15 cm | 6 pcs | |

49504 Round trowel **KASBAH**

Round trowel for the textured effects



| art. | description | dim. | | € |
|-------|-------------------------------------------------------------------------------------------|------|-------|---|
| 49504 | Trowel KASBAH for the textured effects. Polyurethane base, wooden handle. | - | 6 pcs | |

434/437 Leather buffer **VENICE**

Wooden buffer with leather, square and rounded versions



| art. | description | dim. | | € |
|-------|-------------------------------------------------|-------|-------|---|
| 43413 | | 13x13 | 6 pcs | |
| 43415 | VENICE buffer square or rounded base. | 15x15 | 6 pcs | |
| 43417 | | 17x17 | 6 pcs | |
| 43520 | Synthetic leather | 20x20 | 6 pcs | |
| 43421 | | 10x20 | 6 pcs | |
| 43710 | Rounded buffer TRAKS | - | 6 pcs | |

99992 Plastic Decorative buffer

Plastic buffer for decorative effects



| art. | description | dim. | | € |
|-------|-------------------------------------------------------------------------------------|------|-------|---|
| 99992 | Buffer for decorative effects, glazings, sandblasted or metallized. | - | 1 pcs | |

43000 Buffer with **SKALE** effect

Rounded buffer for SKALE effect



| art. | description | dim. | | € |
|-------|------------------------------------------------------------|------|-------|---|
| 43000 | SKALE buffer for textured decorative effects. | - | 1 pcs | |

36611 **DENIM** effect Brush

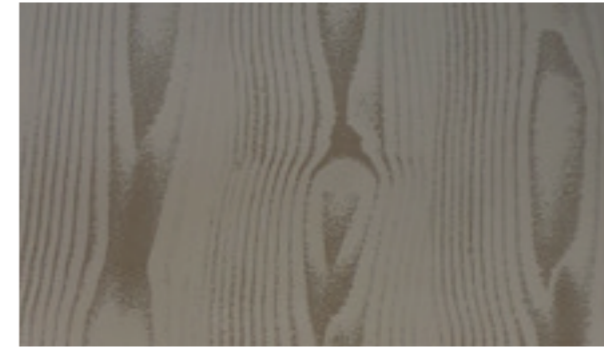
Vegetable fiber made brush, beech wood handle



| art. | description | dim. | | € |
|-------|----------------------------------------------------------------------|------|-------|---|
| 36611 | DENIM effect brush for "jeans" or "fake fabric" effects | - | 6 pcs | |

93410/15 Rubber buffer **WOODY**

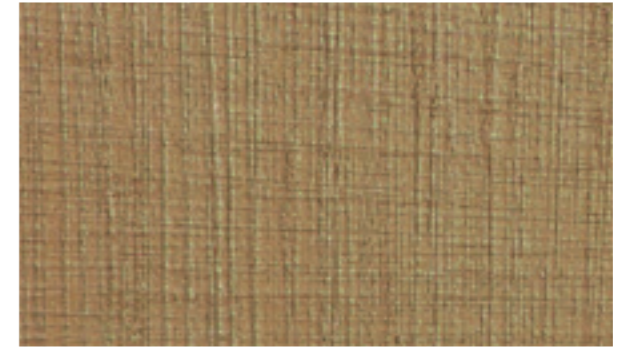
Rubber buffer for "wooden" effect



| art. | description | dim. | | € |
|-------|--------------------------------------|-------|-------|---|
| 93410 | Woody "wooden" effect tool | 10 cm | 6 pcs | |
| 93415 | rubber made | 15 cm | 6 pcs | |

936/492 Rubber brush **YUTA**

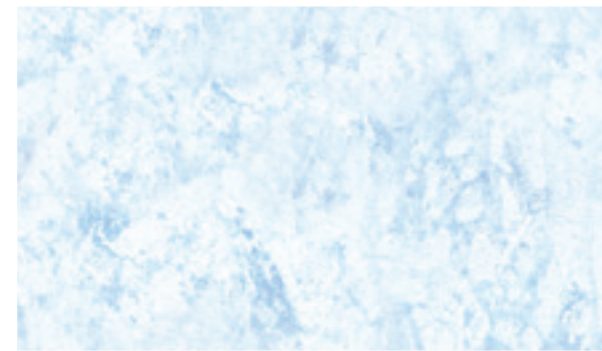
Rubber brush for the textured effects



| art. | description | | € |
|-------|----------------------------------------------------------|-------|---|
| 93600 | Brush YUTA for textured decorative effects. | 6 pcs | |
| 49200 | Brush YUTA for textured decorative effects. | 6 pcs | |

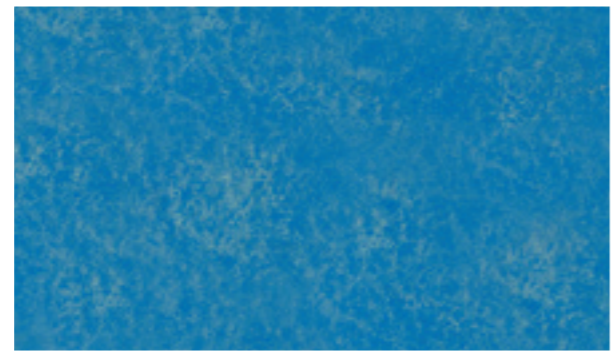
552/441 Sea sponges **Sea Matrix**

Natural sea sponges: **552 Carribbean**, **441 Mediterranean**



4313/4043 Synthetic sponge and roller **Depths**

Sponge and roller for decorative effects, synthetic material made



19002 Cellulose sponge **VEL CEL**

Cellulose sponge, half-moon shaped



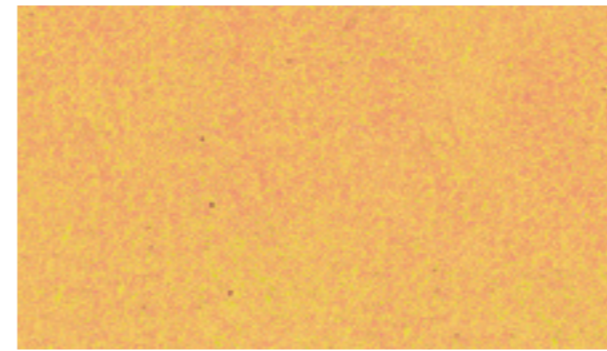
| art. | dim. | € | art. | dim. | € |
|-------|----------------------|---|-------|-------------------|---|
| 55224 | Natural sponge 14 | | 44114 | Natural sponge 14 | |
| 55226 | Carribbean sea 16 | | 44116 | Natural sponge 16 | |
| 55228 | Mediterranean sea 18 | | 44118 | Natural sponge 18 | |
| | | | 44120 | Natural sponge 20 | |

| art. | description | dim. | € |
|------|---------------------------------------|-------|-------|
| 4313 | DEPTHS sponge synthetic material made | - | 6 pcs |
| 4043 | DEPTHS roller complete with handle | 20 cm | 6 pcs |

| art. | description | dim. | € |
|-------|------------------------------------------------------|------|-------|
| 19002 | Cellulose sponge for glazings and decorative effects | - | 6 pcs |

4321/4401 Decorative gloves

Sponge or pile and sponge gloves for decorative effects



| art. | description | dim. | € |
|------|---------------------------------------|------|-------|
| 4321 | Glove ALGA both sides are sponge made | - | 6 pcs |
| 4401 | CLOUDS+ALGA glove pile+ sponge | - | 6 pcs |

4331/4341 Gloves with long and short pile

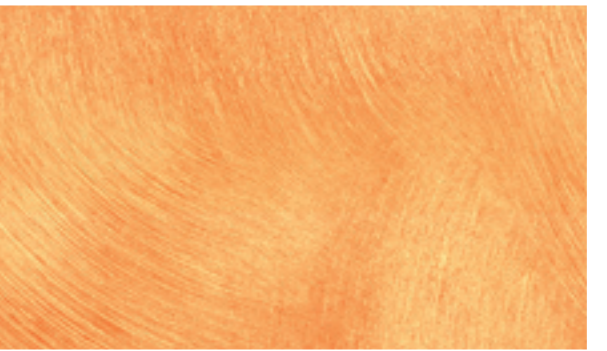
Pile gloves, for rough or smooth surfaces



| art. | description | dim. | € |
|------|-----------------------------------|------|-------|
| 4331 | CLOUDS with long pile | - | 6 pcs |
| 4341 | MISTRAL glove with shortened pile | - | 6 pcs |

43399 Gloves of continuous thread pile

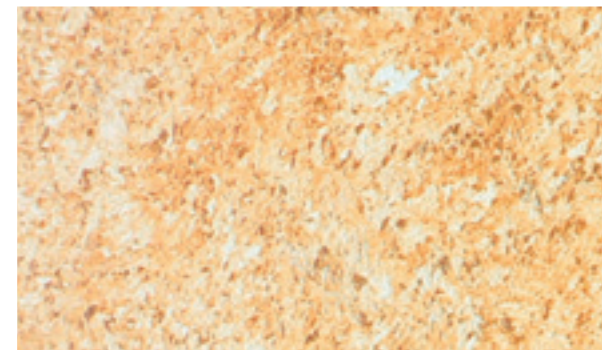
Gloves made of pile **without plucking**



| art. | description | dim. | € |
|-------|-----------------------------------------------|------|-------|
| 43399 | STRONG glove with long pile, without plucking | - | 6 pcs |

36608 Spatula **Double blade PRO**

Transparent plastic spatula with double blade



36607/427 Spatula **Double blade STD**

Spatula with double blade, with or without wooden insert



622/36609 Trowel and spatula **CANYON**

Waved trowel and spatula for textured effects



| art. | description | dim. | | € |
|-------|-------------------------------------------------------------------------------------------------------------------|------|-------|---|
| 36608 | Double blade spatula for finishing with the products with flocculus, sandblasted and textured decorative products | - | 6 pcs | |

| art. | description | dim. | | € |
|-------|--------------------------------------------|------|-------|---|
| 36607 | Double blade spatula with wooden insert | - | 6 pcs | |
| 42700 | Double blade spatula completely in plastic | - | 6 pcs | |

| art. | description | dim. | | € |
|-------|----------------------------------|----------|-------|---|
| 62200 | Plastic trowel waved blade | 28x12 cm | 6 pcs | |
| 36609 | Double blade spatula waved blade | - | 6 pcs | |

439.2 Roller for **bases and pearlescent paints**

Special roller for structured bases and metallized finishes



| art. | description | dim. | | € |
|-------|-------------------------------------------------------------------------|-------|-------|---|
| 43920 | Roller with handle for base coats and pearlescent or metallized effects | 20 cm | 1 pcs | |

47900 Roller **AL KHALI effect**

Roller for textured decorative effects



| art. | description | dim. | | € |
|-------|-------------------------------------------------------------------|-------|-------|---|
| 47900 | Al Khali Roller Decorative roller for textured effects, embossed. | 20 cm | 1 pcs | |

42800 Roller **CLEW effect**

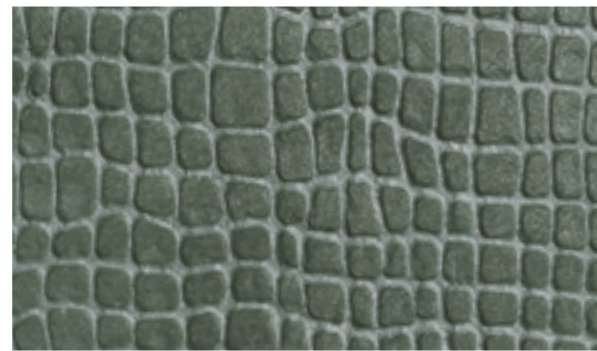
Roller for textured decorative effects



| art. | description | dim. | | € |
|-------|---------------------------------------------------------------|-------|-------|---|
| 42800 | Clew Roller Decorative roller for textured effects, embossed. | 20 cm | 1 pcs | |

47200 Roller **KROK effect**

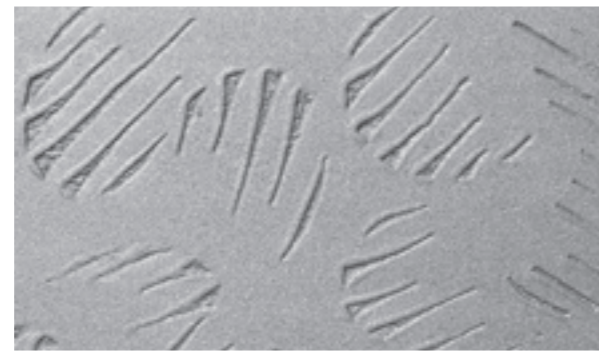
Roller for textured, embossed decorative effects



| art. | description | dim. | | € |
|-------|----------------------------------------------------------------|-------|-------|---|
| 47300 | KROK Roller Roller for textured, embossed decorative effect | 10 cm | 1 pcs | |
| 47200 | | 20 cm | 1 pcs | |

42900 Roller **ALMET effect**

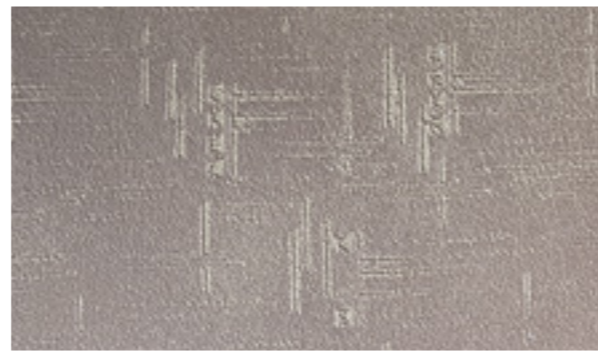
Roller for textured, embossed decorative effects



| art. | description | dim. | | € |
|-------|-----------------------------------------------------------------|-------|-------|---|
| 42900 | Almet Roller Roller for textured, embossed decorative effect | 16 cm | 1 pcs | |

47400 Roller **KENYA effect**

Roller for textured, embossed decorative effects



| art. | description | dim. | | € |
|-------|-----------------------------------------------------------------|-------|-------|---|
| 47400 | Kenya Roller Roller for textured, embossed decorative effect | 16 cm | 1 pcs | |

47700 Roller **DESERT effect**

Roller for textured, embossed decorative effects



| art. | description | dim. | | € |
|-------|------------------------------------------------------------------|-------|-------|---|
| 47700 | Desert Roller Roller for textured, embossed decorative effect | 20 cm | 1 pcs | |

47600 Roller **AGADIR effect**

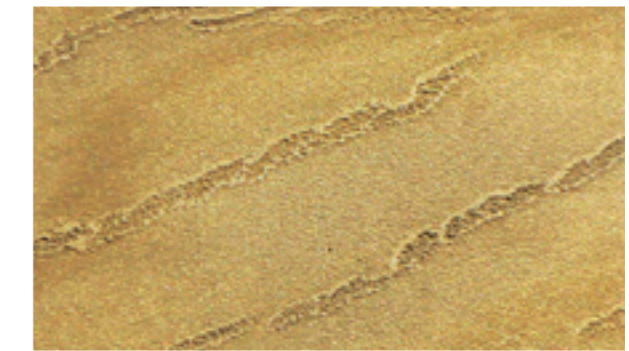
Roller for textured, embossed decorative effects



| art. | description | dim. | | € |
|-------|-------------------------------------------------------------------|-------|-------|---|
| 47600 | Agadir Roller Roller for textured, embossed decorative effects | 20 cm | 1 pcs | |

47500 Roller **GHIBLI effect**

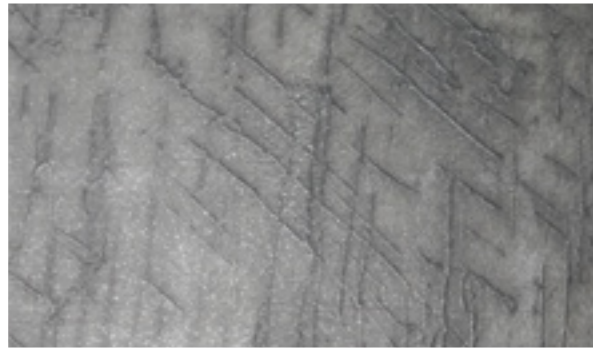
Roller for textured, embossed decorative effects



| art. | description | dim. | | € |
|-------|-------------------------------------------------------------------|-------|-------|---|
| 47500 | Ghibli Roller Roller for textured, embossed decorative effects | 20 cm | 1 pcs | |

461.2 Roller **DELTA effect**

Roller for traditional or textured decorative effects



| art. | description | dim. | | € |
|-------|-----------------------------------------------------------------------|-------|-------|---|
| 461.2 | DELTA Roller Roller for traditional or textured decorative effects | 20 cm | 1 pcs | |

462.2 Roller **BAMBOO effect**

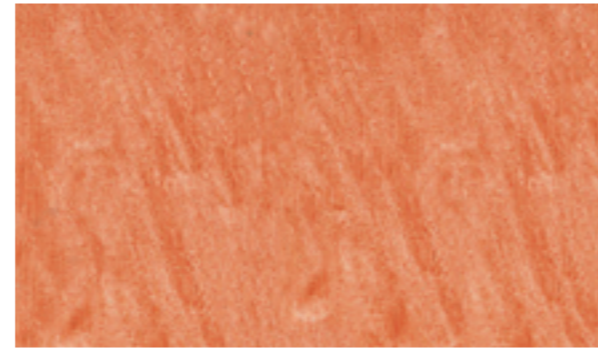
Roller for traditional or textured decorative effects



| art. | description | dim. | | € |
|-------|------------------------------------------------------------------------|-------|-------|---|
| 46226 | BAMBOO Roller Roller for traditional or textured decorative effects | 20 cm | 1 pcs | |

460.2 Roller **GLAZING effect**

Roller for traditional decorative effects



| art. | description | dim. | | € |
|-------|-------------------------------------------------------------|-------|-------|---|
| 46020 | GLAZING Roller Roller for traditional decorative effects | 20 cm | 1 pcs | |

436.2 Roller **RAPPER effect**

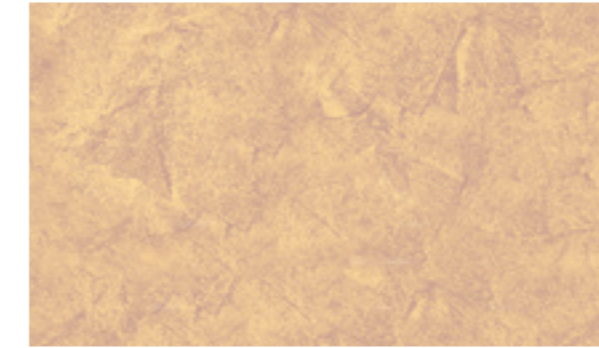
Roller for traditional decorative effects



| art. | description | dim. | | € |
|-------|------------------------------------------------------------|-------|-------|---|
| 43620 | RAPPER Roller Roller for traditional decorative effects | 20 cm | 1 pcs | |

466.2 Roller **KREOS effect**

Roller for traditional decorative effects



| art. | description | dim. | | € |
|-------|-----------------------------------------------------------|-------|-------|---|
| 46620 | KREOS Roller Roller for traditional decorative effects | 20 cm | 1 pcs | |

46921 Roller **SULTAN effect**

Roller with natural sea sponge inserts



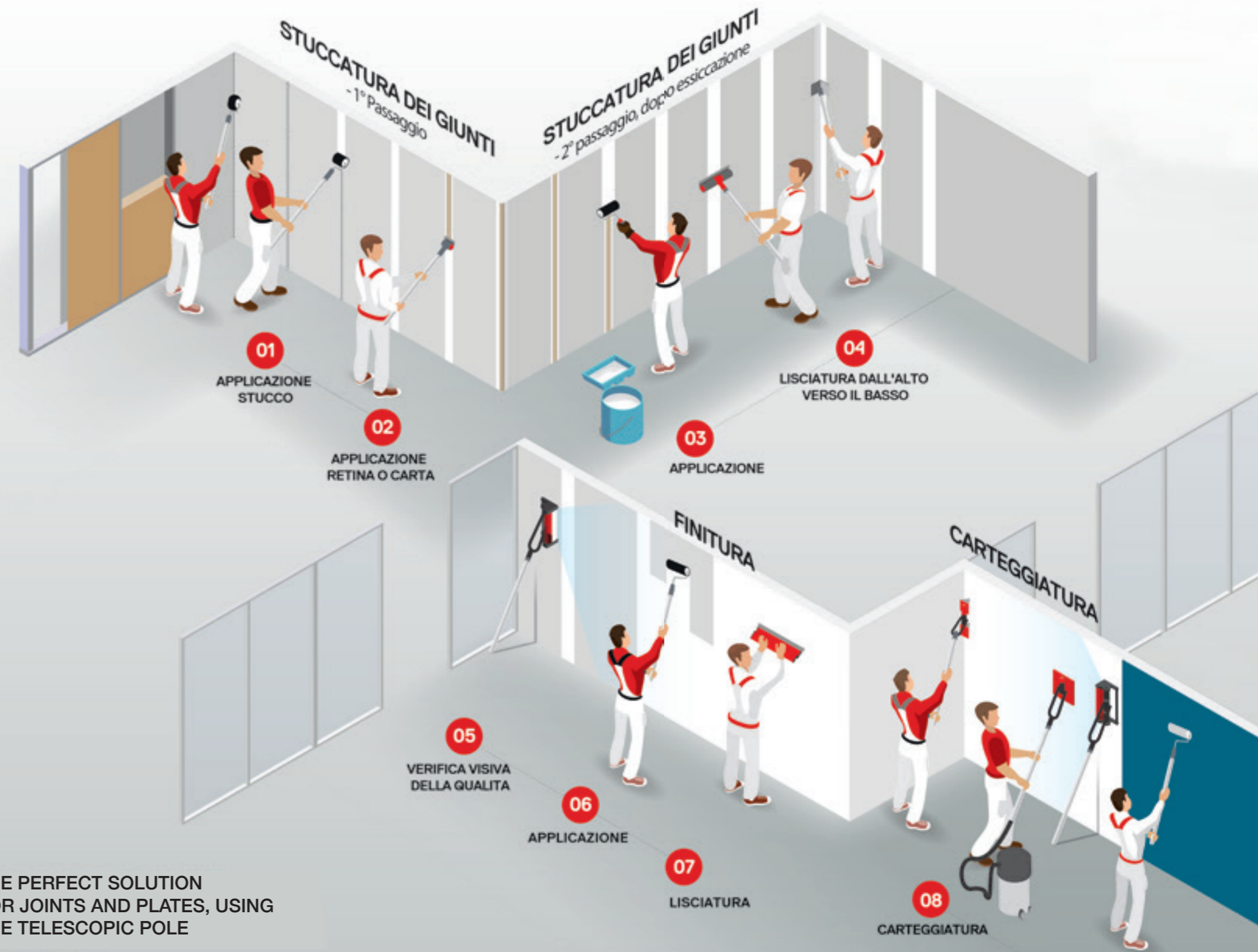
| art. | description | dim. | | € |
|-------|--------------------------------------------------------------------|-------|-------|---|
| 46921 | SULTAN Roller decorative roller with natural sea sponge inserts | 20 cm | 1 pcs | |



BOLDRINI

“ UNCOMPROMISED
INNOVATION

BOLDRINI



THE PERFECT SOLUTION
FOR JOINTS AND PLATES, USING
THE TELESCOPIC POLE

Metodo innovativo



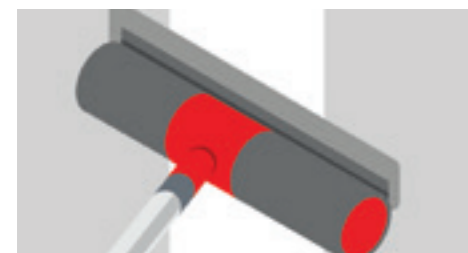
1. Apply the stucco on the joints with the 8 cm roller, starting from the center and moving up or down.



2. Apply the grid or the paper using the spatula DecoLiss 10 cm and polish the excess stucco.



3. Once dried, apply the second coat of stucco with the 18 cm roller.



4. Polish with the spatula DecoLiss cm 30, starting from up to down.

48000 Professional TAPING SET

Set for applying stucco on joints and corners between plasterboards layers



Contains:
 - Spatulas DecoLiss cm 10 and cm 30
 - Rollers for stucco cm 8, cm 18 and angular
 - Trowels for corners
 - Telescopic pole 150 cm

49000 Professional MULTI-TOOLS SET

For applying stucco on joints and skimming the plasterboard layers



| art. | description | | € |
|-------|------------------------------|-------|---|
| 48000 | Professional Taping Set | 1 pcs | |
| 49000 | Professional Multi tools Set | 1 pcs | |

946 Refill rollers for applying stucco

Textured rollers made of special fabric for stucco



Contains:
 - Spatulas DecoLiss cm 10 and cm 30
 - Rollers for stucco cm 8 - cm 18 and angular
 - Spatulas ParfaitLiss cm 45 and 60
 - Spatula for corners
 - Telescopic poles for ParfaitLiss e DecoLiss



| art. | description | | € |
|--------|----------------------|-------|---|
| 946-97 | Refill roller, cm 8 | 6 pcs | |
| 946-98 | Refill roller, cm 18 | 6 pcs | |
| 946-99 | Refill roller, cm 22 | 6 pcs | |



1. Apply the stucco on the wall evenly with the roller of 22 cm.



2. Smooth the stucco with the spatula ParfaitLiss as for indicated for surfaces treatment.

Spatula Parfait Liss original



Tecnology BIFLEX: uses the extra flexible blade, combined with the hard support to guarantee the perfect straightness.

It allows to smooth perfectly and without deburring, **large surfaces very quickly.**

Available in big sizes till **100 cm.**

It can be used with telescopic pole, **so no ledger is needed**, it allows the even finishing of all the surfaces.

Reduces the working and sanding terms.

51000 Professional FINISHING SET

For applying and finishing of stucco on large surfaces

Contains:
 - Spatulas ParfaitLiss cm 10-25-45-60
 - Pole Parfait-Liss 1 m
 - Rollers for stucco cm 8 and 22
 - Pole for rollers 1,5 m



541 Spatula Parfait Liss original

For finishing of the large surfaces, with the telescopic pole

INOX



| art. | description | | € |
|---------|-----------------------------|-------|---|
| 51000 | Professional Finishing Set | 1 pcs | |
| 541-25 | Spatula Parfait liss 25 cm | 1 pcs | |
| 541-35 | Spatula Parfait liss 35 cm | 1 pcs | |
| 541-45 | Spatula Parfait liss 45 cm | 1 pcs | |
| 541-60 | Spatula Parfait liss 60 cm | 1 pcs | |
| 541-80 | Spatula Parfait liss 80 cm | 1 pcs | |
| 541-100 | Spatula Parfait liss 100 cm | 1 pcs | |

52000 Professional AIRLESS FINISHING SET

Spatulas ParfaitLiss, sizes: 25-35-45-60-80-100 cm + pole 2m



1718 Trowel Reflex, for precision finishing

INOX steel extra flexible blade, polycarbonate handle

INOX



| art. | description | | € |
|--------|--------------------------|-------|---|
| 52000 | Professional Airless Set | 1 pcs | |
| 1718-1 | Trowel Reflex 30x11 | 1 pcs | |
| 1718-2 | Trowel Reflex 35x11 | 1 pcs | |

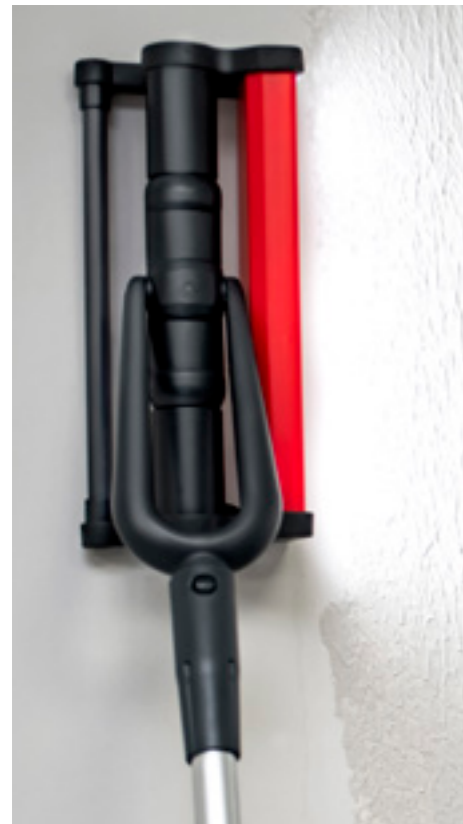
Professional lamp for better quality work



Perfect Finish lamp: perfect for easy the working process and having the best control of the smoothed walls.

Can be positioned on the wall or ceiling with the help of the special telescopic pole Perfect Finish.

- LED lamp rechargeable, 5 h autonomy
- Led life - 2.000h
- Case and battery charger included



54000 Lamp PERFECT FINISH

Lamp for lighting in a horizontal way the walls and ceilings



55000 Special pole PERFECT FINISH

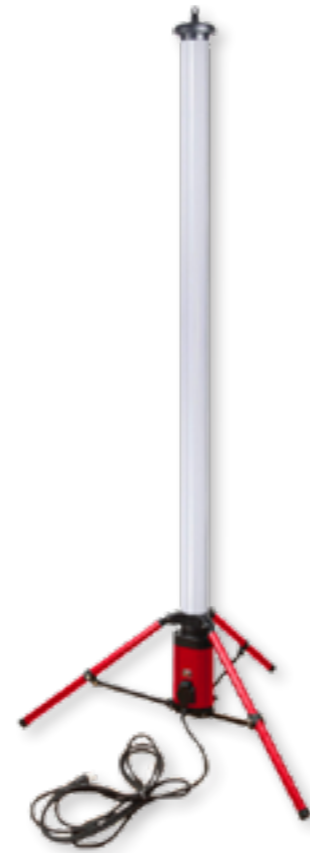
Special pole for lamp Perfect finish positioning.



| art. | description | | € |
|-------|--------------------------------------------------------------------|-------|---|
| 54000 | Lamp Perfect Finish Complete of case and battery charger | 1 pcs | |
| 55000 | Telescopic pole Perfect Finish 2x1,5m = extended 3m | 1 pcs | |

56000 Lamp TORRE LED 100 W

LED light tower, covering 360°, 8.000 lumens power

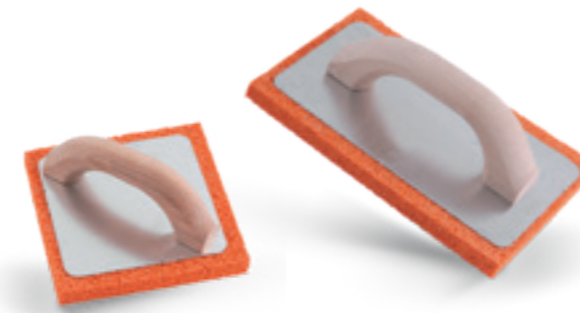


| art. | description | | € |
|-------|----------------------|-------|---|
| 56000 | LED Lamp tower 100 W | 1 pcs | |

Sponge trowels with aluminium or plastic support

633 Soft sponge trowel

Aluminium support, wooden handle



30147 Soft sponge trowel

Polyurethane foam made support



| art. | description | | | € |
|-------|--------------------------------------------------|-------|--------|---|
| 633 | Soft sponge trowel | 14x14 | 12 pcs | |
| | Aluminium support wooden handle | 21x14 | 12 pcs | |
| | | 24x10 | 12 pcs | |
| 30147 | Soft sponge trowel | 21x15 | 12 pcs | |
| 30151 | Polyurethane support | 28x14 | 12 pcs | |

632 Hard sponge trowel

Aluminium support, wooden handle



30146 Hard sponge trowel

Polyurethane foam made support



| art. | description | | | € |
|-------|---------------------------------------------------|-------|--------|---|
| 632 | Hard sponge trowel | 14x14 | 12 pcs | |
| | Aluminium support wooden handle | 21x14 | 12 pcs | |
| | | 24x10 | 12 pcs | |
| 30146 | Soft sponge trowel Polyurethane support | 21x15 | 12 pcs | |

60417 Soft sponge

For pre-mixed plasters

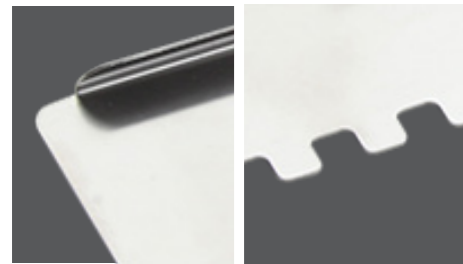


31132 Trowel for tiles' cleaning

Trowel for tilers and floorers and tiles' cleaning



| art. | description | | | € |
|-------|----------------------------|---------|--------|---|
| 60417 | Soft sponge | 16x11x6 | 12 pcs | |
| 31132 | Trowel for tiles' cleaning | 29x14 | 12 pcs | |



New trowels are perfect for wall claddings and insulations. The serrated part of the blade are made for applying the cement and the straight one - for the glazing.

The special shaped blade is made to avoid a suction effect and the plaster's scrolling.

Serrated from both sides blade are made to get the applying of the glue in the corners easy.



58000 Trowel FOR INSULATIONS - 48x13 cm

Serrated blade 8x8 from one side and reinforced from the other

INOX



59000 Trowel FOR INSULATIONS - 60x13 cm

Trapezoidally serrated blade from one side and reinforced from the other

INOX



| art. | description | | € |
|-------|-------------------------------------------------------------------|-------|---|
| 58000 | Trowel for insulations Size 48x13 cm 8x8 serrated blade | 1 pcs | |
| 59000 | Trowel for insulations Size 60x13 cm Trapezoidally serrated | 1 pcs | |

60000 Trowel FOR INSULATIONS - 48x13 cm

Special trowel for insulations - size 48x13 cm

INOX



821.617 Trowel SWISS TYPE 48x13

821 with straight blade - 617 with serrated blade 10x10

INOX



| art. | description | | € |
|-------|------------------------------------------------|-------|---|
| 60000 | Trowel for insulations Dim. 48x13 cm | 1 pcs | |
| 82100 | Trowel Swiss Type INOX Straight blade | 4 pcs | |
| 61700 | Trowel Swiss Type INOX serrated blade 10x10 | 4 pcs | |

627 Trowels SERRATED BLADE 28x12

Trowel with serrated steel blade, aluminium support, wooden handle



5569 Extra long Trowel INOX Steel

Extra long trowel, with resin support. 35x13 - 40x13

INOX



| art. | description | | € |
|-------|--------------------------------------------------------------------------------------------------------------------------------------------------------|--------|---|
| 627 | Serrated steel trowel: - 62735 serrated 3,5x3,5 - 62735 serrated 6x6 - 62735 serrated 8x8 - 62735 serrated 10x10 - 62735 serrated 12x12 | 12 pcs | |
| 55691 | INOX steel Trowel 35x13 | 12 pcs | |
| 55692 | INOX steel Trowel 40x13 | 12 pcs | |

5571 . 5572 Trowel INOX, 28x13 cm

Trowel of INOX steel, **ecowood handle**

INOX



62000 Aluminium Rectifier

Professional aluminium rectifier with steel blades



| art. | description | | € |
|-------|-----------------------------------------------------------------|--------|---|
| 5571 | INOX steel Trowel ecowood handle Size 28x13 | 12 pcs | |
| 5572 | Serrated INOX Trowel Serrated as: 4x4 - 6x6 - 8x8 - 10x10 | 12 pcs | |
| 62000 | Professional rectifier Aluminium body Steel made blades | 1 pcs | |

625.626 Plastic Trowels 28x13

625 all in plastic without rivets - 626 with rivets, wooden handle



618 Trowel SWISS TYPE 48x12

INOX Steel made Swiss Type trowel, wooden handle

INOX



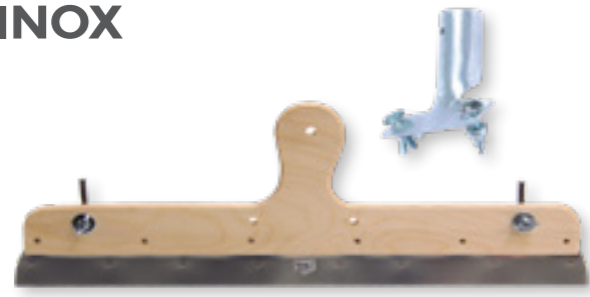
| art. | description | | € |
|------|-------------------------------------------------|--------|---|
| 625 | Plastic trowel rounded borders Size 28x13 | 12 pcs | |
| 626 | Plastic trowel Wooden handle Size 28x13 | 12 pcs | |
| 618 | Swiss Type Trowel INOX steel 48x12 | 1 pcs | |



71000 INOX Steel Squeegees for the floors

Squeegee with the insert for handle, size **56 cm**

INOX



73000.01 Serrated blades for Squeegees.71000

Serrated blades for squeegee, perfect for resins and self-levellings



pointed
5x3 mm



pointed
6x8 mm

| art. | description | | € |
|-------|-------------------------------------------------------------------|-------|---|
| 71000 | Squeegee with smooth blade Base for the serrated blades | 1 pcs | |
| 73000 | Serrated blade squeegee 5x3 mm Set of 2 blades of 28 cm | 1 pcs | |
| 73001 | Serrated blade squeegee 6x8 mm Set 2 blades of 28 cm | 1 pcs | |

71002 INOX Steel Squeegees for the floors

Squeegee with the insert for handle, size **60 cm**



78000 German type Reinforced Trowel

German type Trowel - size **9x60 cm**

INOX



| art. | description | | € |
|-------|--------------------------------------------------|-------|---|
| 71002 | INOX steel Squeegee with straight blade 60 cm | 1 pcs | |
| 78000 | Reinforced trowel German Type size 60x9 cm | 1 pcs | |

93000 Kneepad for tilers

Rubber made kneepad for tilers



30001.2 Rubber trowel for grouts

30001 soft rubber - 30002 hard rubber



| art. | description | | € |
|-------|-----------------------------------------|--------|---|
| 93000 | Kneepad for tilers | 1 pcs | |
| 30001 | Trowel for grouts Soft rubber | 12 pcs | |
| 30002 | Trowel for grouts Hard rubber | 12 pcs | |

1966... Spiked Roller

Spiked roller with needles, standard dimensions



19665 Spiked roller cm 50

Extra long spiked roller, **with crankcase for sketches reduce**



| art. | description | | € |
|-------|---------------------|-------|---|
| 19662 | Spiked roller cm 18 | 1 pcs | |
| 19663 | Spiked roller cm 25 | 1 pcs | |
| 19665 | Spiked roller cm 50 | 1 pcs | |

Extra long rollers, for floors
Available on page: 24/25



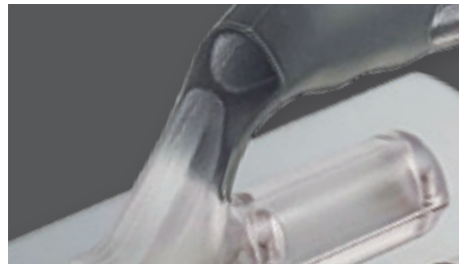
96000 Spiked shoes 35 mm

Spiked shoes for the tilers.



| art. | description | | € |
|-------|--------------------|-------|---|
| 96000 | Spiked shoes 35 mm | 1 pcs | |

Trapezoidal, INOX steel Trowels, for high-level decoration



New decorative trowel s. 5590.

High quality and tempered INOX steel blade with bevelled shape.

New single-peaced polycarbonate handle, extra light and durable. Makes the tool's ergonomy better and reduces the applicator's efforts.



5590 Extra light trowel for decoration

INOX steel blade, bevelled shape. Polycarbonate handle

INOX



Bevelled shape



5580 INOX steel Trowel mirror-polished

Trapezoidal shape, bevelled and wood-and-rubber handle

INOX



Bevelled shape



5570 INOX polished Trowel

Trapezoidal shape, bevelled profile and wood-and-rubber handle

INOX



2070 INOX polished Trowel

Trapezoidal shape, bevelled profile and wooden handle

INOX



| art. | description | | | | € |
|------|--------------------------|-------|--------|--------|---|
| 5590 | INOX trapezoidal Trowel. | 20x8 | 0,6 mm | 12 pcs | |
| | Polycarbonate handle | 24x10 | 0,6 mm | 12 pcs | |
| | | 28x12 | 0,6 mm | 12 pcs | |
| 5570 | INOX trapezoidal Trowel. | 20x8 | 0,5 mm | 12 pcs | |
| | Wood-and-rubber handle | 24x10 | 0,6 mm | 12 pcs | |
| | | 28x12 | 0,6 mm | 12 pcs | |

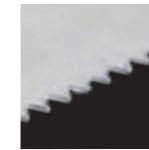
| art. | description | | | | € |
|------|--------------------------|-------|--------|--------|---|
| 5580 | INOX trapezoidal Trowel. | 20x8 | 0,5 mm | 12 pcs | |
| | Mirror-polished blade. | 24x10 | 0,6 mm | 12 pcs | |
| | Wood-and-rubber handle | 28x12 | 0,6 mm | 12 pcs | |
| 2070 | INOX trapezoidal Trowel | 20x8 | 0,5 mm | 12 pcs | |
| | Wooden handle | 24x10 | 0,6 mm | 12 pcs | |
| | | 28x12 | 0,6 mm | 12 pcs | |

Steel and INOX steel trapezoidal and square Trowels

63200 Serrated decorative Trowel

INOX steel serrated Trowel for decorative stucco applying

INOX



Lama con un lato dentato



623 Plastic Trowel

Plastic decorative Trowel, rounded borders

INOX



| art. | description | | | € |
|-------|-------------------------------------------------------------------------|-------|--------|---|
| 63200 | Trowel with the blade serrated from one side and smooth from the other. | 28x12 | 12 pcs | |
| 623 | Plastic decorative Trowel | 24x10 | 12 pcs | |

5568 INOX steel square Trowel

INOX tempered steel blade. Wood-and-rubber handle

INOX



2068 INOX steel square Trowel

INOX tempered steel blade. Wooden handle

INOX



| art. | description | | | € |
|------|-----------------------------------|-------|--------|---|
| 5568 | INOX steel square Trowel | 20x8 | 12 pcs | |
| | Soft tools wood-and-rubber handle | 24x10 | 12 pcs | |
| | | 28x12 | 12 pcs | |
| | | 35x12 | 12 pcs | |
| 2068 | INOX steel Trowel | 20x8 | 12 pcs | |
| | Wooden handle | 24x10 | 12 pcs | |
| | | 28x12 | 12 pcs | |
| | | 28x12 | 12 pcs | |

5567 Steel square Trowel

Steel blade. Wood-and-rubber handle



2067 Steel square Trowel

Steel blade. Wooden handle



| art. | description | | | € |
|------|-----------------------------------|-------|--------|---|
| 5567 | Steel Trowel | 20x8 | 12 pcs | |
| | Soft tools wood-and-rubber handle | 24x10 | 12 pcs | |
| | | 28x12 | 12 pcs | |
| | | 28x12 | 12 pcs | |
| 2067 | Steel Trowel | 20x8 | 12 pcs | |
| | Wooden handle | 24x10 | 12 pcs | |
| | | 28x12 | 12 pcs | |
| | | 28x12 | 12 pcs | |

2731 INOX steel Spatula, Soft Tools

INOX tempered steel blade, bi-component handle

INOX



* For plaster-boards *

516 INOX steel Spatula

INOX tempered steel blade, plastic handle

INOX



NEW

607 INOX Spatula with rounded borders

INOX steel blade with rounded borders, wooden handle

INOX



* For decoration *

2731.6 INOX steel Spatula, screwdriver

INOX tempered steel blade, bi-component handle

INOX



* For plaster-boards *

505 INOX steel Spatula

INOX steel Spatula, plastic handle

INOX



511 INOX steel Spatula

INOX steel Spatula, wooden handle

INOX



| art. | description | | | € |
|--------|--------------------------------------------------------------|--------|-------|---|
| 27310 | Spatula with INOX steel tempered Blade balanced flexibility. | 100 mm | 6 pcs | |
| 27312 | | 120 mm | 6 pcs | |
| 27315 | Bi-component Handle | 150 mm | 6 pcs | |
| 27325 | Metal tip | 250 mm | 6 pcs | |
| 2731.6 | Spatula with screwdriver insert. | 150 mm | 6 pcs | |

| art. | description | | | 30 mm | 40 mm | 60 mm | 80 mm | 100 mm | 120 mm | 150 mm |
|------|---------------------------------------|--------|---|-------|-------|-------|-------|--------|--------|--------|
| 516 | INOX PRO steel Spatula Plastic handle | 6 pcs | € | | | | | | | |
| 505 | INOX steel Spatula Plastic handle | 12 pcs | € | | | | | | | |
| 607 | Rounded borders Spatula Wooden handle | 6 pcs | € | | | | | | | |
| 511 | INOX steel Spatula Wooden handle | 12 pcs | € | | | | | | | |

605 INOX Spatula, ECOWOOD

INOX steel Spatula, recycled wood pulp made handle

INOX



NEW

518.533 Hard blade Scrapers

s.518 scraper with short handle - s.533 scraper with long handle



532 Forged steel 10 cm Scraper

Shank forged blade, wooden handle



604 Steel professional Spatula

Good quality steel Spatula, wooden handle



603 Steel Spatula

Steel Spatula, wooden handle



2617 Multipurpose Scraper INOX

Lama in acciaio INOX, Impugnatura bi-materiale

INOX



| art. | description | | | 20 mm | 30 mm | 40 mm | 50 mm | 60 mm | 70 mm | 80 mm | 90 mm | 100 mm | 120 mm |
|------|-----------------------|--------|---|-------|-------|-------|-------|-------|-------|-------|-------|--------|--------|
| 605 | INOX Spatula ecowood | 20 pcs | € | | | | | | | | | | |
| 604 | Steel PRO Spatula | 12 pcs | € | | | | | | | | | | |
| 603 | ECO Steel Spatula | 12 pcs | € | | | | | | | | | | |
| 518 | Scraper, short handle | 12 pcs | € | | | | | | | | | | |
| 533 | Scraper, long handle | 6 pcs | € | | | | | | | | | | |

| art. | description | | € |
|------|-----------------------------------------------|-------|---|
| 532 | Forged steel Scraper Wooden handle size 10 cm | 6 pcs | |
| 2617 | Multipurpose Scraper, INOX steel | 6 pcs | |

365 Scraper for removing paint

Steel scraper with long body and wooden handle



360 Scraper with triangular head

Steel scraper with long body and wooden handle



517 Scraper with interchangeable blade

Multipurpose scraper with long metal body



1190 Multipurpose scraper

Multipurpose scraper with long body and wooden handle



4610 Scrapers for telescopic pole

Sizes available: 10-15-20 cm, **flexible blade**



480 Scrapers for telescopic poles

Sizes available: 10-15-20 cm, **hard blade**



| art. | description | | | € |
|------|------------------------|-------|-------|---|
| 365 | Scraper with long body | 65 mm | 1 pcs | |
| 1190 | Multipurpose scraper | - | 1 pcs | |

| art. | description | | | € |
|------|------------------------------------------------------------|-------|--------|---|
| 360 | Scraper with long body | - | 1 pcs | |
| 4610 | Scraper for telescopic poles with flexible blade | 10 cm | 12 pcs | |
| 4615 | | 15 cm | 12 pcs | |
| 4620 | | 20 cm | 12 pcs | |

| art. | description | | | € |
|-------|-------------------------------------------------------|-------|--------|---|
| 517 | Multipurpose scraper | 10 cm | 12 pcs | |
| 51704 | Spare blades | 10 cm | 12 pcs | |
| 48010 | Scraper for telescopic pole with hard blade | 10 cm | 6 pcs | |
| 48015 | | 15 cm | 6 pcs | |
| 48020 | | 20 cm | 6 pcs | |

02035 INOX steel mini trowel

Mini trowel for skim coats and mortars

INOX



658 INOX steel mini trowel

Mini trowel for skim coats and mortars

INOX



558-858 Angled mini trowels

INOX mini trowels, for corners and edges

INOX



363-362 Scrapers for glassmakers

S. 363 with retractable blade - 362 with fixed blade and handle



641-642 Mini trowel with sharp and round points

S. 641 mini trowel with sharp point - S.642 mini trowel with round point



653-654 Round and square Trowel

S. 653 trowel with round point - S.654 trowel with square point



| art. | description | | | € |
|-------|--------------------------------|---|-------|---|
| 02035 | INOX mini trowel | - | 6 pcs | |
| 363 | Scraper with retractable blade | - | 6 pcs | |
| 362 | Scraper with fixed blade | - | 6 pcs | |

| art. | description | | | € |
|------|------------------------------|----|-------|---|
| 658 | INOX mini trowel | - | 1 pcs | |
| 641 | Mini trowel with sharp point | 14 | 1 pcs | |
| 642 | Mini trowel with round point | 14 | 1 pcs | |

| art. | description | | | € |
|------|--------------------------|----|-------|---|
| 858 | Trowel for edges | - | 1 pcs | |
| 558 | Trowel for corners | - | 1 pcs | |
| 653 | Trowel with round point | 16 | 1 pcs | |
| 654 | Trowel with square point | 18 | 1 pcs | |
| | | 20 | 1 pcs | |
| | | 22 | 1 pcs | |

536 Blue steel Blades for levelling

Flexibile spatulas made of blue steel



422 Steel, 'Giapponese' blades

Steel, 'giapponese' blades



562 Serrated spatula, wooden handle

Art. serrated: **thin 562.3 -medium 562.2 - large 562.1**



421 SET Plastic Blades

Set of 'Giapponese', plastic blades sizes 50/80/100/120



423/424 INOX Steel 'Giapponese' Blades

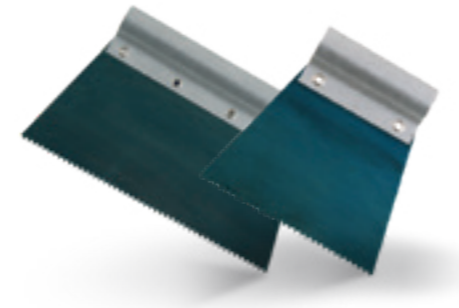
S.423 INOX 'Giapponese' blades- 424 Set sizes 60/80/100/120

INOX



328 Serrated spatula tubular handle

Art. serrated: **thin 3284 -Medium 3282 - Large 3283**



| art. | description | | | € | 20 mm | 30 mm | 40 mm | 50 mm | 60 mm | 70 mm | 80 mm | 90 mm | 100 mm | 110 mm | 120 mm | 130 mm | 140 mm |
|------|------------------------------|----|---|---|-------|-------|-------|-------|-------|-------|-------|-------|--------|--------|--------|--------|--------|
| 536 | Blu steel levelling blades | 12 | € | | | | | | | | | | | | | | |
| 421 | Set of plastic blades | 6 | € | | | | | | | | | | | | | | |
| 422 | Steel, 'Giapponese' blades | 12 | € | | | | | | | | | | | | | | |
| 423 | INOX, 'Giapponese' blades | 12 | € | | | | | | | | | | | | | | |
| 424 | Set INOX 'Giapponese' blades | 1 | € | | | | | | | | | | | | | | |

| art. | description | | | € |
|------|-----------------------|-------|--------|---|
| 562 | Spatula for glues | 12 cm | 12 pcs | |
| | Serrated thin 562.3 | | | |
| | Serrated medium 562.2 | 20 cm | 12 pcs | |
| 328 | Spatula for glues | 12 cm | 12 pcs | |
| | Serrated thin 3284 | | | |
| | Serrated medium 3282 | 20 cm | 12 pcs | |
| | Serrated large 3283 | | | |

265 'French' type spatula PREMIUM

INOX steel, best quality spatula, SOFT handle

INOX



NEW

556 'French' type spatula ecowood

INOX steel, 'French' type spatula, pulpwood handle

INOX handle **ecowood**



NEW

20195 Chalk line Reel + chalk

20195 chalk line reel - 20126 chalk



361 Professional Glass cutter



901 Adjustable Double blade Spatula

Steel, double bladed Spatula, wooden handle



| art. | description | | | € | | |
|-------|--------------------------------|-------|------------------------------------------|-------|-------|--|
| 361 | Professional Glass cutter | - | 1 pcs | | | |
| 265 | 'French' type Spatula PREMIUM | 10 cm | 6 pcs | | | |
| | | 12 cm | 6 pcs | | | |
| | | 14 cm | 6 pcs | | | |
| | | 16 cm | 6 pcs | | | |
| | | 18 cm | 6 pcs | | | |
| | | 20 cm | 6 pcs | | | |
| 556 | INOX steel blade | 20 cm | 6 pcs | | | |
| | | 22 cm | 6 pcs | | | |
| 556 | Handle Soft tools Bi-component | 16 cm | 6 pcs | | | |
| | | 18 cm | 6 pcs | | | |
| | | 20 cm | 6 pcs | | | |
| | | 22 cm | 6 pcs | | | |
| | | 556 | Ecowood handle made of recycled pulpwood | 16 cm | 6 pcs | |
| | | | | 18 cm | 6 pcs | |
| 20 cm | 6 pcs | | | | | |

| art. | description | | | € |
|------|------------------------------------------|-------|-------|---|
| 901 | Double blade Spatula | 16 cm | 1 pcs | |
| 556 | 'French' type Spatula INOX steel blade | 10 cm | 6 pcs | |
| | | 12 cm | 6 pcs | |
| | | 14 cm | 6 pcs | |
| | | 16 cm | 6 pcs | |
| | | 18 cm | 6 pcs | |
| | | 20 cm | 6 pcs | |
| 556 | Ecowood handle made of recycled pulpwood | 20 cm | 6 pcs | |
| | | 22 cm | 6 pcs | |

| art. | description | | | € |
|-------|-----------------|---|-------|---|
| 20195 | Chalk line Reel | - | 1 pcs | |
| 20126 | Coloured chalk | - | 1 pcs | |

03301 Mixer FOR PAINTS

Mixer for drill, suitable for paints and liquid products



06000 Mixer SPEED

Mixer for drill, for varnishes and glues



60480 Mixer ECO

Mixer for drill, for varnishes and liquids



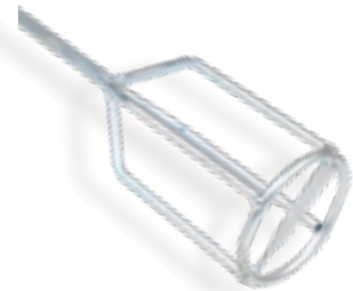
60492 Mixer PLASTER

Mixer for drill, suitable for mortars and varnishes



02000 Mixer LIGHT

Mixer for drill, for glues, mortars and gypsum



00100 Mixer MINI

Mixer for drill, for enamels



| art. | description | Ø | kg | € |
|-------|------------------|--------|----------|---|
| 03301 | Mixer for paints | 75 mm | 10-20kg | |
| 60492 | Mixer PLASTER | 120 mm | 10-15 kg | |

| art. | description | Ø | kg | € |
|-------|-------------|--------|----------|---|
| 06000 | Mixer SPEED | 95 mm | 15-20 kg | |
| 02000 | Mixer LIGHT | 100 mm | 10-15 kg | |

| art. | description | Ø | kg | € |
|-------|---------------------|--------|---------|---|
| 60460 | | 60 mm | 2-4 kg | |
| 60480 | Mixer ECO | 80 mm | 3-6 kg | |
| 60499 | For liquid products | 100 mm | 3-6 kg | |
| 60415 | | 120 mm | 6-10 kg | |
| 00100 | Mixer MINI | 60 mm | - | |

632 Wooden Mixer Spatulas

Wooden Mixer Spatulas size 50 e 25 cm



631 Steel Mixer Spatula

Spatola mescolatrice in acciaio flessibile cm 27



| art. | description | dim. | € |
|--------|---------------|-------|--------|
| 632-25 | Wooden mixer | 25 cm | 12 pcs |
| 632-50 | Wooden mixer | 50 cm | 12 pcs |
| 631 | Mixer Spatula | 27 cm | 12 pcs |

621 Plastic mixer

Plastic drilled Mixer, for enamels and varnishes - cm 25



630 Mixer and can opener

Mixer and can opener cm 28 and cm 35



| art. | description | dim. | € |
|------|----------------------------|-------|--------|
| 621 | Plastic mixer | 25 cm | 12 pcs |
| 630 | Mixer and can opener cm 28 | 28 cm | 12 pcs |
| 630 | Mixer and can opener cm 35 | 35 cm | 12 pcs |

G85000 Aprimix multifunctional tool

Can opener and mixer made of reinforced synthetic resins



Aprimix allows to open easily plastic cans, enamels and varnishes.

The innovative shape makes it possible to mix the varnishes in the cans till 2l.

Made of reinforced synthetic resins, guarantees durability and time lasting.



| art. | description | dim. | € |
|--------|------------------------------|------|--------|
| G85000 | Aprimix Multifunctional tool | - | 20 pcs |

15201-46202 Knurled Rollers

Polyurethane foam made knurled rollers, sizes 5 and 15 cm



36403 Ebonite knurled roller

Ebonite hard knurled roller, wooden handle



1443 Wallpapers Spatula

Spatula for wallpaper made of transparent polycarbonate



542 Multifunctional Spatula for wallpapers

Hard plastic made Spatula for wallpapers, with handle



83600 Wooden ruler cm 100

Set of 3 wooden rulers cm 100



36407 Extra long scissors



| art. | description | dim. | | € |
|-------|---------------------------------------|--------|-------|---|
| 15201 | Polyurethane foam made knurled roller | 15 cm | 1 pcs | |
| 46202 | Polyurethane foam made knurled roller | 5 cm | 1 pcs | |
| 36403 | Ebonite made knurled roller | 110 mm | 1 pcs | |

| art. | description | dim. | | € |
|------|---------------------------------|------|--------|---|
| 1443 | Flexible Spatula for wallpapers | - | 12 pcs | |
| 542 | Hard Spatula for wallpapers | - | 12 pcs | |

| art. | description | dim. | | € |
|-------|------------------------------------|--------|-------|---|
| 83600 | Wooden ruler cm 10 Set of 3 pcs | 100 cm | 1 pcs | |
| 36407 | Extra long scissors | - | 1 pcs | |

75990 Cutter, 25 mm blade

Cutter for plasterboards, 25 mm blades



00520 Cutter 18 mm blade

Cutter with 18 mm blade, rubbered plastic body



| art. | description | dim. | | € |
|-------|------------------------------------------------------------|------|--------|---|
| 75990 | Cutter for plasterboards 25 mm blade Rubbered handle | - | 12 pcs | |
| 00520 | Rubbered Cutter, 18 mm blade | - | 12 pcs | |

05020 Cutter, 18 mm blade

Cutter with 18 mm blade, plastic body



00128 Cutter, 9 mm blade

Mini cutter with 9 mm blades, plastic body



| art. | description | dim. | | € |
|-------|-------------------------------|------|--------|---|
| 05020 | Plastic Cutter 18 mm blade | - | 12 pcs | |
| 00128 | Plastic Cutter 9 mm blade | - | 12 pcs | |

0518/9 Blades 9 and 18 mm

0518L 18 mm blades, 0519L 9 mm blades



7643 Blades 25 mm

Blades for 25 mm cutter



| art. | description | dim. | | € |
|-------|-----------------------------------|------|--------|---|
| 0518L | BOX 10 BLADES for 18 mm cutter | 18 | 12 pcs | |
| 0519L | BOX 10 BLADES for 9 mm cutter | 9 | 12 pcs | |
| 7643 | BOX 6 BLADES for 25 mm cutter | 25 | 12 pcs | |

7930 Caulking guns for DIY

Light caulking gun, for DIY use



7935 Caulking gun semi pro

Light caulking gun, semi professional



7934 Caulking gun, professional

Reinforced caulking gun, professional use



76193 Rubbered buffer

Rubbered buffer for sandpaper



76192 Plastic buffer


Plastic buffer for sandpaper




7719... Abrasive sponges

Abrasive sponge, thin/medium/large grain



| art. | description |  | € |
|-------|-------------------------------|-------------------------------------------------------------------------------------|---|
| 7930 | Caulking gun for DIY use | 12 pcs | |
| 76193 | Rubbered buffer for sandpaper | 12 pcs | |

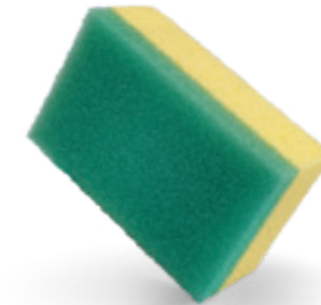
| art. | description |  | € |
|-------|--------------------------------|---------------------------------------------------------------------------------------|---|
| 7935 | Caulking gun semi professional | 12 pcs | |
| 76192 | Plastic buffer for sandpaper | 12 pcs | |

| art. | description |  | € |
|-------|----------------------------|---------------------------------------------------------------------------------------|---|
| 7934 | Caulking gun professional | 12 pcs | |
| 77196 | Sponge thin grain | 12 pcs | |
| 77199 | Sponge medium grain | 12 pcs | |
| 77198 | Sponge large grain | 12 pcs | |

26041 Synthetic sponge



26042 Sponge with double function



19002 Sponge made of cellulose



26008 Synthetic sponge kitty




26056 Bug shifter Sponge




26064 Glove for car cleaning works



| art. | description |  | € |
|-------|------------------------|---------------------------------------------------------------------------------------|---|
| 26041 | Synthetic sponge | 12 pcs | |
| 26008 | Synthetic sponge kitty | 12 pcs | |

| art. | description |  | € |
|-------|-----------------------------|---------------------------------------------------------------------------------------|---|
| 26042 | Sponge with double function | 12 pcs | |
| 26056 | Bug shifter Sponge | 12 pcs | |

| art. | description |  | € |
|-------|-----------------------------------|---------------------------------------------------------------------------------------|---|
| 19002 | Cellulose sponge half-moon shaped | 12 pcs | |
| 26064 | Glove for car cleaning works | 12 pcs | |

30400 Brush hobby, with long handle

Brass made brush with long handle



010B 5 row Brush

5 row metal brush, violin-shaped



0185R Brush for welder

Metal brush for welder, wooden handle



30275 Brush hobby with short handle

Brass made brush with short handle



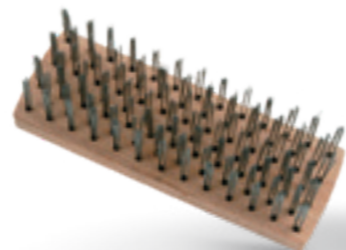
042 Brush for candles


Brass brush for candles





01844 Brush 6 rowed

Metal brush, 6 rowed, rectangular shape



| art. | description |  | € |
|-------|-------------------------------|-------------------------------------------------------------------------------------|---|
| 30400 | Brush hobby with long handle | 24 pcs | |
| 30275 | Brush hobby with short handle | 24 pcs | |

| art. | description |  | € |
|------|-----------------------------|---------------------------------------------------------------------------------------|---|
| 010B | Brush 5 rowed violin shaped | 12 pcs | |
| 042 | Brush for candles | 12 pcs | |

| art. | description |  | € |
|-------|----------------------------------|---------------------------------------------------------------------------------------|---|
| 0185R | Metal brush for welder | 12 pcs | |
| 01844 | Brush 6 rowed rectangular shaped | 12 pcs | |

2047 Tampico brush

Tampico brush for tar



20421 Pvc ceiling brush, black/white

Ceiling brush for soaking, made of black/white pvc. Plastic handle



134-135 Synthetic brushes

134 Violin-shaped brush - 135 Oval-shaped brush



137 Industrial use broom

Industrial broom made of synthetic fiber



150 Tampico ceiling brush


Tampico ceiling brush for soaking. Wooden handle




133-136 Vegetable fiber brush

133 Violin-shaped brush - 136 Oval-shaped brush



| art. | description |  | € |
|-------|----------------------------------|---------------------------------------------------------------------------------------|---|
| 2047 | Tampico brush for tar | 6 pcs | |
| 137 | Industrial broom synthetic fiber | 6 pcs | |
| 132.2 | Broom, wooden handle | 6 pcs | |

| art. | description |  | € |
|-------|--------------------------------------------------------|---------------------------------------------------------------------------------------|---|
| 20421 | Black/white pvc Ceiling brush. Plastic base and handle | 12 pcs | |
| 150 | Tampico Ceiling brush 5x15 Wooden base and handle | 12 pcs | |

| art. | description |  | € |
|------|--------------------------------------|---------------------------------------------------------------------------------------|---|
| 134 | Synthetic brush violin-shaped | 12 pcs | |
| 135 | Oval-shaped synthetic brush | 12 pcs | |
| 133 | Violin-shaped, vegetable fiber brush | 12 pcs | |
| 136 | Oval-shaped, vegetable fiber brush | 12 pcs | |

** IMPORTANT NOTE: as for the market's instability, availability and prices of these articles could be revised, taking into consideration the market trend **

G 329 Polyester Glove ECO

Polyester glove 13 gauge, with white polyurethane coating



G 330 Polyester Glove ECO

Polyester glove 13 gauge, with black polyurethane coating



G 85 Nylon + Polyurethane Glove PROFI

Nylon Glove 15 gauge, with white polyurethane coating



G 321 Polyester+Nitrile Glove ECO

Polyester Glove 13 gauge, with black nitrile coating



G 320 Nylon+Nitrile Glove PROFI

Nylon Glove 15 gauge, with nitrile coating



G 332 Nylon + latex foam Glove PROFI

Polyester Glove 13 gauge, latex foam coating



| art. | description | | € |
|-------|--------------------------------------------------------------------|--------|---|
| G 329 | Polyester Glove ECO, polyurethane coating (sizes 6/7/8/9/10) white | 12 pcs | |
| G 321 | Polyester Glove ECO Nitrile coating (sizes 6/7/8/9/10) black | 12 pcs | |

| art. | description | | € |
|-------|-------------------------------------------------------------------|--------|---|
| G 330 | Polyester Glove ECO Black polyurethane coating (sizes 6/7/8/9/10) | 12 pcs | |
| G 320 | Nylon Glove PROFI Nitrile coating (sizes 6/7/8/9/10) | 12 pcs | |

| art. | description | | € |
|-------|-----------------------------------------------------------------|--------|---|
| G 85 | Nylon Glove PROFI White polyurethane coating (sizes 6/7/8/9/10) | 12 pcs | |
| G 332 | Nylon Glove PROFI Latex foam coating (sizes 8/9/10) | 12 pcs | |

** IMPORTANT NOTE: as for the market's instability, availability and prices of these articles could be revised, taking into consideration the market trend **

G 36 Pig grain leather Glove

Pig grain leather Glove, knitted + velcro back side



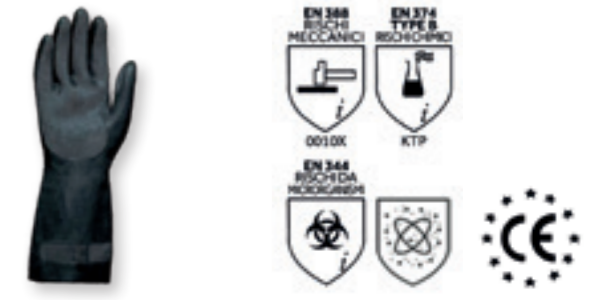
G 176 Natural latex Glove

Non-slip palm and fingers for cleaning and chemical works



G 189 Latex and neoprene mix Glove

Flocked inside, non-slip milled outside



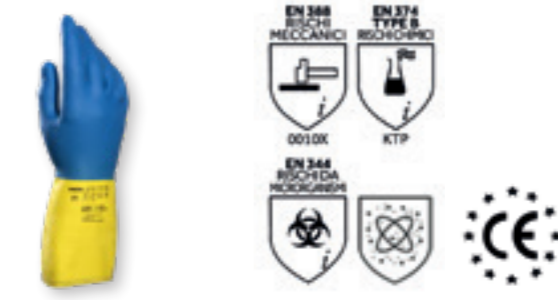
G 324 Nylon + nitrile and foam Glove PROFI

Nylon Glove 15 gauge, nitrile foam coating, dotted palm side



G 97 Latex and neoprene Glove

Flocked inside, non-slip milled outside



A 344 Headphones SNR 25db

Light and comfortable headphones for different uses



| art. | description | | € |
|-------|------------------------------------------------------|--------|---|
| G 36 | Pig grain leather Gloves (sizes 8/9/10) | 12 pcs | |
| G 324 | Nylon Gloves Nitrile and foam coating (sizes 8/9/10) | 12 pcs | |

| art. | description | | € |
|-------|-------------------------------------------------------------|--------|---|
| G 176 | Plush fabric Glove made of natural latex (sizes 6/7/8/9/10) | 10 pcs | |
| G 97 | Latex+ neoprene Glove (sizes 6/7/8/9/10) | 10 pcs | |

| art. | description | | € |
|-------|-----------------------------------------------|--------|---|
| G 189 | Latex and neoprene mix Glove (sizes 7/8/9/10) | 10 pcs | |
| A344 | Noise-reduction headphones | 1 pcs | |

** IMPORTANT NOTE: as for the market's instability, availability and prices of these articles could be revised, taking into consideration the market trend **

A 20 Mask ffp 1D NR

For LOW toxicity dusts and aerosol



A 25 Mask with valve ffp 2D NR

For MEDIUM toxicity dusts and aerosol



A 26 Mask with valve ffp 3D NR

For toxic dusts and aerosol



A 28 Mask with valve ffp 2D NR

For MEDIUM toxicity dusts and aerosol, active carbon filter



A 78 Polipropilene tnt Suit

Protective suit made of TNT



| art. | description | | € |
|------|---------------------------|--------|---|
| A 20 | Mask ffp 1D NR | 20 pcs | |
| A 25 | Mask with valve ffp 2D NR | 12 pcs | |

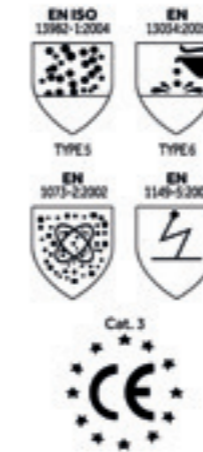
| art. | description | | € |
|------|------------------------------------------|--------|---|
| A 26 | Mask with valve ffp 3D NR | 5 pcs | |
| A 28 | Mask with active carbon filter ffp 2D NR | 12 pcs | |

| art. | description | | € |
|------|----------------------------------------------------------|--------|---|
| A 78 | Polipropilene TNT Suit Available sizes: M-L-XL-XXL | 12 pcs | |

** IMPORTANT NOTE: as for the market's instability, availability and prices of these articles could be revised, taking into consideration the market trend **

A 79 Professional Protective suit

Made to protect from liquids and toxic dusts' splashes



| art. | description | | € |
|------|-------------------------------------------------------------------------------------------------------------|--------|---|
| A 79 | Protective suit from liquids' (type 6) and toxic dusts' (type 5) splashes Available sizes: M-L-XL-XXL | 12 pcs | |

B92.902989 Protective eyeglasses

B 92 with fixed temples - 902989 with adjustable temples



902299 Pvc eyeglasses, panoramic lenses

With 4 valves for good aeration



| art. | description | | € |
|--------|------------------------------------|-------|---|
| B 92 | Eyeglasses with fixed temples | 1 pcs | |
| 902989 | Eyeglasses with adjustable temples | 1 pcs | |
| 902299 | Pvc eyeglasses with valves | 1 pcs | |

912606 Semi-mask, double filtered A2P3

Integral filters, no maintenance needed



| art. | description | | € |
|--------|-----------------------------------------------------------------------|-------|---|
| 912606 | Half-mask for painting works Integral, not-interchangeable filters | 1 pcs | |



CONDIZIONI GENERALI DI VENDITA

Gli ordini vengono assunti sempre salvo approvazione della casa e alle sotto indicate condizioni che si intendono accettate dal committente. Il presente catalogo annulla e sostituisce qualsiasi altro in Vostre mani, non è da ritenersi impegnativo e potrà subire modifiche anche senza preavviso, al fine di migliorare le produzioni.

Eventuali contestazioni verranno prese in esame solo se presentate entro i 5 giorni dal ricevimento delle merci.

IMBALLO: gratuito. Verranno fatturati al costo solo gli imballi speciali. Ci riserviamo di modificare le dimensioni degli imballi, a seconda delle esigenze.

RESI MERCE: non si accettano resi se non preventivamente autorizzati dalla Pennelli Boldrini.

GARANZIA DI QUALITA': i prodotti Boldrini sono garantiti da difetti di materiale o di fabbricazione. In ogni caso tale garanzia non potrà mai andare oltre la sostituzione gratuita del pezzo riscontrato difettoso, ogni altra spesa o indennizzo esclusi. La presentazione di qualsiasi reclamo, non dispensa il compratore dal pagamento della fattura alla scadenza stabilita.

NB: per altezza di setola o fibra, si intende la misura di setola utilizzata e non la misura riscontrabile fuori ghiera.

PAGAMENTI: la R.B. respinta annulla eventuali ordini in corso. Trascorso il termine stabilito per il pagamento, decorreranno gli interessi commerciali. Fino al pagamento totale, la merce si intende di riservato dominio a favore della Pennelli Boldrini. La merce non interamente pagata non potrà essere sottoposta a pegno e se dei terzi facessero valere diritti su tale merce, l'acquirente dovrà darcene tempestiva informazione.

CONTROVERSIE: per qualsiasi controversie, anche se originate dal compratore, unico tribunale competente a giudicare sarà quello di Mantova.

PREZZI DI LISTINO: i prezzi di listino sono IVA esclusa.

CLAUSOLA REVISIONE PREZZI: i prezzi del presente listino potranno subire modifiche all'atto della spedizione qualora, nel periodo intercorrente fra assunzione ed evasione dell'ordine, siano intervenute sostanziali variazioni degli elementi di costo.

I TERMINI DI CONSEGNA: anche se concordati non sono vincolanti. Eventuali ritardi, anche se non dovuti a cause di forza maggiore, non potranno comunque mai dare diritto a rimborso di spese o indennizzi a qualsiasi titolo richiesti.

ORDINE E RISPETTO DELLE CONFEZIONI: gli ordini devono rispettare i minimi imballi indicati a catalogo.

Nel caso di evasione incompleta ci riserviamo la facoltà, a nostra discrezione, di effettuare la spedizione anche parziale o di attendere un nuovo ordine.

RESA DELLA MERCE FRANCO ITALIA: Porto franco per ordini superiori a € 400,00 al netto di sconti. Per ordini inferiori, saranno addebitate le spese di trasporto in fattura.

RISCHI NEL TRASPORTO: la merce viaggia sempre a rischio e pericolo del committente. In caso di avarie, furti, manomissioni e ammanchi, il destinatario dovrà rivolgersi esclusivamente al vettore.

GENERAL SALES CONDITIONS

Orders are always accepted "subject manufacturer's approval" and subject to the conditions set out below that the customer is deemed to have accepted.

PRICE REVIEW CLAUSE: The prices on this price list may be changed at the moment of dispatch if in the period between acceptance and dispatch of the order cost factor have significantly changed.

TERMS OF DELIVERY: In any case, they aren't binding. Any delays, even if they are not due to force majeure, can never give entitlement to refunds or any kind of compensation.

ORDER AND PACKAGING: The orders must be delivered in the packaging specified under the heading PACKAGING. If an order is

incomplete, we reserve the right to carry out a partial delivery or to wait for a new order.

MINIMUM ORDER: to agree.

TRANSPORT COSTS: to agree.

CARRIAGE RISKS: carriage is always at the customers risk. If the goods are faulty, stolen, tampered with or incomplete, the recipient must contact only the shipper. Any complaints will be considered only if made within 5 days from receipt of goods.

PACKAGING: free. Only special packaging will be invoiced at cost. We reserve the right to modify the dimension of packaging to suit requirements.

RETURNED GOODS: returned goods are not accepted unless the return has been agreed beforehand by Pennelli Boldrini.

QUALITY GUARANTEE: Pennelli Boldrini equipment is guaranteed against material and manufacturing defects. In all cases, this guarantee can never cover more than free replacement of the defective piece. All other expenses or compensation are excluded. Complaints do not entitle the buyer to refuse to pay invoices when they fall due.

PAYMENTS: To agree.

CONTROVERSIES: for any controversy, even if they originate by the purchaser, the court of Mantova (Italy) has sole jurisdiction.

PRICE LIST: listed prices are VAT excluded.



Pennelli Boldrini srl

Via Aldo Moro 64/66, 46019 Viadana (MN)
tel +39 0375 889946 fax +39 0375 88179
www.penneliboldrini.it info@gruppoboldrini.it



Effects No limits